



The **Yotta Solar Module** is a **High Power Line** of Bifacial PERC modules that provide highly efficient (20.7%) **conversion** of sunlight to usable energy. The bifacial boost of up to **25% increases** the annual production for a **higher return** on investment and lower LCOE. **Designed** to optimize production in your C&I application alongside **Yotta's Eco-system** of products.

**30** PERFORMANCE YEAR WARRANTY

### High Reliability

30 year power output & 12 year product warranty



### New Module Design

Lower internal current, decreased internal losses and lower degradation product warranty



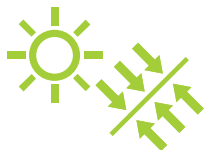
### Excellent Anti-PID Performance

Exceeds Anti-PID test standards

**450** RATED POWER W

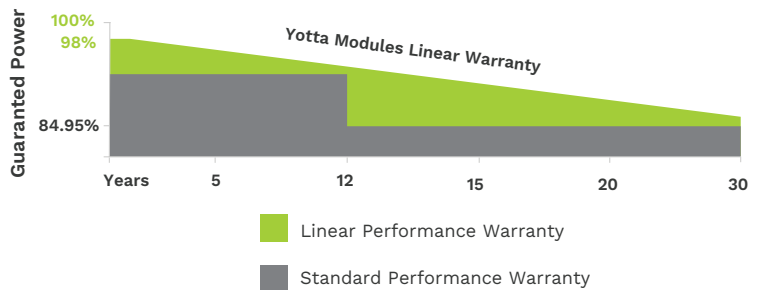
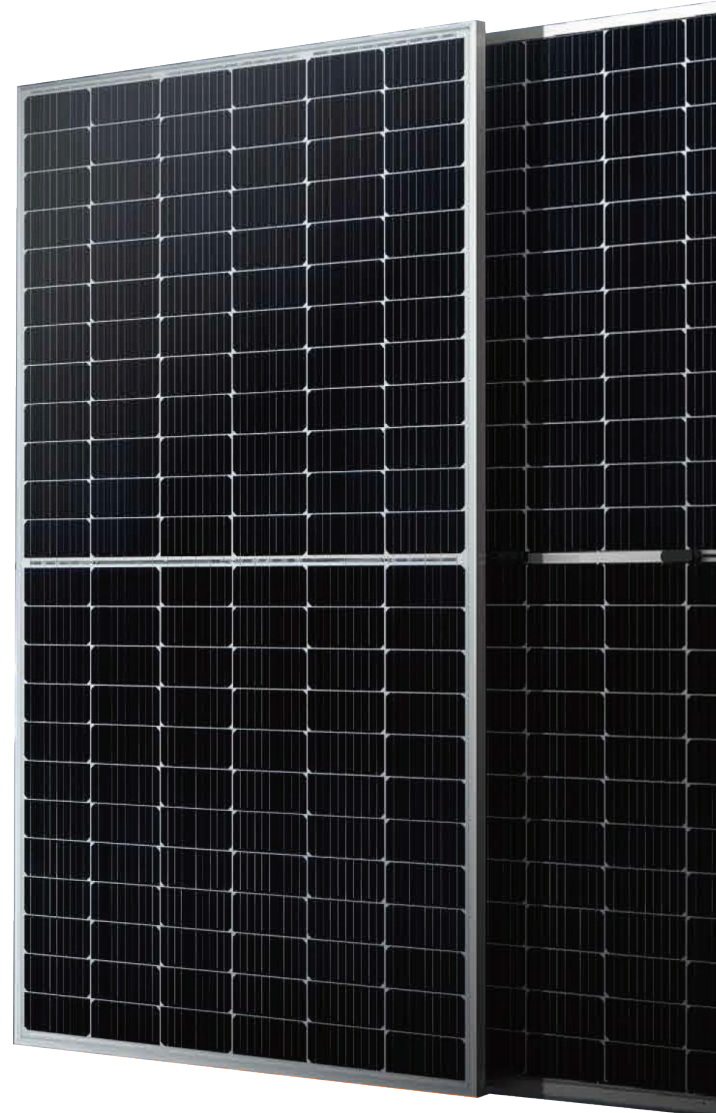
### High Power Module

20.7% efficient at STC



### Bifacial PERC Technology

Up to 25% higher backside boost



- EC 61215 / IEC 61730 / UL 61703
- Low internal current, Low Rs loss Ga doped wafer
- Attenuation <2% (1st year) / ≤0.45% (Linear)
- No water-permeability and high wear-resistance
- IP68 Junction Box (Highly rated waterproof level)



# YSM-B450-1 Solar Module Data Sheet

**MODEL** YSM-B450-06-72-1

## ELECTRICAL

Testing Condition	STC	NMOT
Maximum Power (Pmax/W)	450	334
Operating Voltage (Vmpp/V)	42.0	39.3
Operating Current (Impp/A)	10.72	8.52
Open-Circuit Voltage (Voc/V)	50.4	47.1
Short-Circuit Current (Isc/A)	11.36	9.16
Module Efficiency (%)	20.70	

STC: Irradiance 1000W/m<sup>2</sup>, Spectra at AM1.5, Module Temperature 25°C. Power output tolerance: 0~+5W, Test uncertainty for: Pmax±3%  
 NMOT: Irradiance 800W/m<sup>2</sup>, Spectra at AM1.5, Ambient Temperature 20°C. Wind speed 1m/s

## REAR SIDE POWER GAIN

Pmax gain	5%	10%	15%	20%	25%
Pmax/W	472.5	495	517.5	540	562.5
Vmpp/V	42.0	42.0	42.0	42.0	42.0
Impp/A	11.3	11.8	12.3	12.9	13.4
Voc/V	50.4	50.4	50.4	50.4	50.4
Isc/A	11.9	12.5	13.1	13.6	14.2

## MECHANICAL

Solar Cell	Monocrystalline 166*166mm
No. of Cells	144 (6*24)
Module Dimensions	2094*1038*30mm (82.44*40.87*1.18inches)
Weight	28.0kg (61.73lbs)
Front Glass	2.0mm AR Coating Semi-tempered Glass
Back Glass	2.0mm Glazed Semi-tempered Glass
Frame	Anodized Aluminium Alloy
Junction Box	IP68, 3 Bypass Diodes
Output Cables	4mm <sup>2</sup> (IEC), 12AWG(UL) 2000mm in Length or Customized Length
Connectors	T01/LJQ-3-CSY/MC4/MC4-EVO2

## APPLICATION CONDITIONS

Maximun System Voltage	1500V/DC
Operating Temperature	-40°C~+85°C
Maximun Series Fuse	25A
Safety Protection Class	Class II
Mechanical Load	Front side 5400Pa, Back side 2400Pa
Refer. Bifaciality Factor	70%±5%

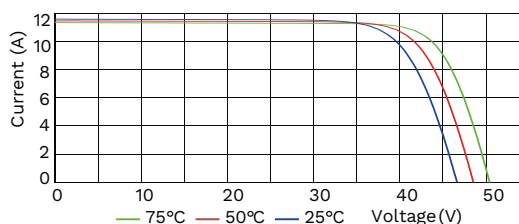
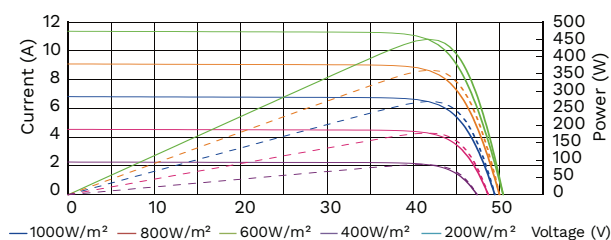
## TEMPERATURE CHARACTERISTICS

Temperature Coefficient of Pmax	-0.36%/°C
Temperature Coefficient of Voc	-0.26%/°C
Temperature Coefficient of Isc	+0.043%/°C
Nominal Module Operating Temperature(NMOT)	43±2°C

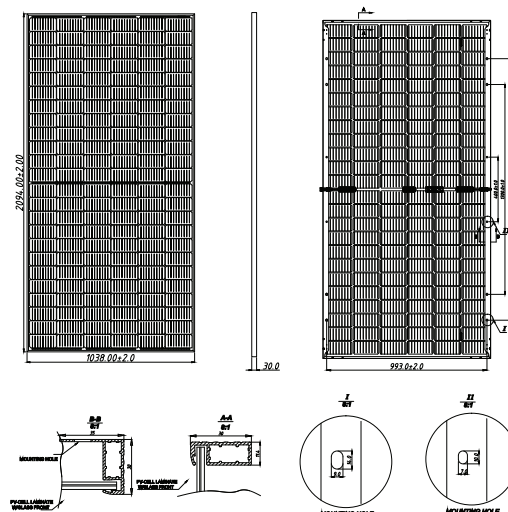
## PACKING

Pieces Per Pallet	36	36(USA)
Pieces Per Container (40'HQ)	792	648

## I-V CURVE



## TECHNICAL DRAWINGS



YOTTA ENERGY INC.  
 2101 E. Saint Elmo Road, Suite 150  
 Austin, TX 78744  
 +1 (512) 856 7788