

Franklin Home Power Generator Module

Standby Generator Integration for Whole Home Energy Resilience

Though solar energy is a clean and renewable way to supplement or replace grid power, sometimes there are extreme weather conditions where the grid goes down and the solar system isn't generating enough energy. Backup generators are a critical energy management source where those events are becoming more common. In the past, it has been difficult to integrate generators and solar power, but FranklinWH has addressed that need. The Franklin Home Power (FHP) energy management solution provides the ability to smoothly switch between the grid, solar, generators and battery backup to provide robust home energy management.

Fast and reliable switchover to generator power during a grid failure is a major way in which the Generator Module benefits the household. In addition, generators can be noisy. During a longer outage, or when operating off-grid, generator auto start times can be scheduled through the FranklinWH app. You can run the generator during the day, when people aren't home, and switch to battery power at night, according to a pre-set schedule or through manual control.

Safe and reliable energy relies on multiple sources of power. The FHP Generator Module adds generators to provide a complete home energy management solution.



Smart

Simple

Flexible

Integrated Power Management

The generator can both power home loads and charge the aPower X battery.

Wide Adaptability

Compatible with most models of standby generators. Applicable for new and retrofit installations.

Easy Installation

The Generator Module is an optional aGate X component which can be easily installed without requiring any external components.

Better Experience

Seamless and automatic generator switchover and remote manual control via the app.

Easy Installation

Compatible with any two-wire or utility sense standby generator, with or without ATS.

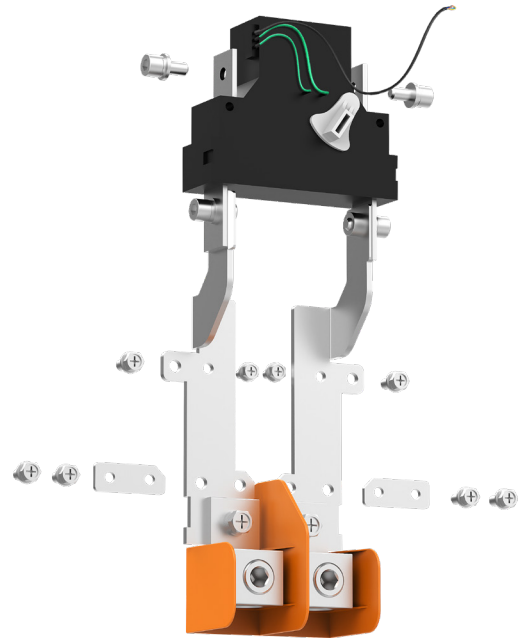
Operating Modes

Automatic:

Set the aPower X battery State of Charge (SoC) limits for the generator to start and stop. The FHP will intelligently control the power sources to balance the generator and battery.

Manual:

Remotely start and stop the generator according to the household's immediate needs via the FranklinWH app.



Specification

AC Voltage	120 V / 240 V, Split
Voltage Range	204 to 276 V @240 V
Maximum Continuous Current	160 A
Over Current Protection Device for the Generator Module	200 A Max.
Frequency Range	60 Hz \pm 5 Hz
Voltage Measurement Accuracy	\pm 1%
Frequency Measurement Accuracy	\pm 0.01 Hz
Current Measurement Accuracy	\pm 1%
Ambient Temperature	- 4°F to 122°F (- 20 to 50°C)
User Interface	FranklinWH app
Operating Modes	Auto (Timed Charging Schedule based on battery's SoC)
	Manual Remote Control via FranklinWH app
Control Types	Utility Voltage Sensing
	Two-wire Dry Contact
	ATS (Auto transfer switch)
Dimensions (H \times W \times D)	11.2 \times 4.1 \times 2.6 in (285 \times 105 \times 65 mm)
Weight	3.2 lbs (1.45 kg)

Address: 1731 Technology Dr. Suite 530 San Jose , CA 95110 **Telephone:** +1 888-837-2655 **Email:** info@franklinwh.com **Website:** www.franklinwh.com

Copyright 2022 FranklinWH Energy Storage Inc. All rights reserved. The Franklin logo, FranklinWH, and other trademarks or service names are the trademarks of FranklinWH Energy Storage Inc. The document is for informational purposes only, data subject to change. 2023-02-27

