



YUKON N Series

Half-Cell N-Type Bifacial Module

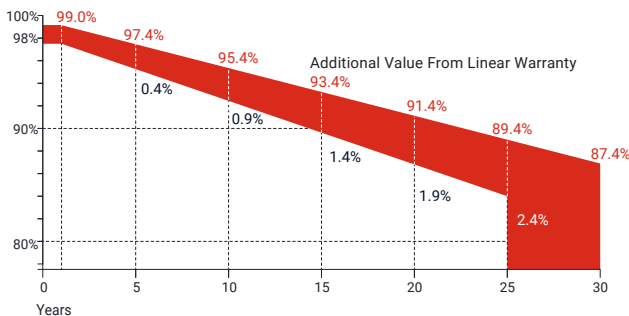
420-435Wp | **22.28%**
Module Power Output | Max Efficiency



Key Features

- High module conversion efficiency
- Better temperature coefficient
- Super multi busbar technology
- Low attenuation long warranty
- Superior load capacity
- Higher bifacially
- USA based liability insurance
- Houston, Texas based company

Warranty



30 Years Guarantee on product material and workmanship

30 Years Linear power output warranty

Product Certification

IEC61215:2016; IEC 61730:2016; UL61215; UL61730	
IEC62804	PID
IEC61701	Salt Mist
IEC62716	Ammonia Resistance
IEC60068	Dust and Sand
IEC61215	Hailstone
Fire Type (UL61730): Type 29	
ISO14001:2015; ISO9001:2015; ISO45001:2018	

About SEG Solar

Founded in 2016, SEG is a leading vertically integrated PV manufacturer headquartered in Houston, Texas, U.S., and is dedicated to delivering reliable and cost-effective solar modules to the utility, commercial and residential markets. By the end of 2023, SEG has shipped over 5 GW of solar modules worldwide. The company is expected to exceed a production capacity of 5.5 GW by the end of 2024.



Download Datasheet

Electrical Characteristics

Module Type	SEG-420-BTD-BG			SEG-425-BTD-BG			SEG-430-BTD-BG			SEG-435-BTD-BG		
	Front STC	Front NOCT	Back STC	Front STC	Front NOCT	Back STC	Front STC	Front NOCT	Back STC	Front STC	Front NOCT	Back STC
Maximum Power -Pmp(Wp)*	420	316	336	425	320	340	430	324	344	435	328	348
Open Circuit Voltage -Voc(V)	38.50	36.58	38.48	38.70	36.77	38.68	38.90	36.96	38.88	39.10	37.19	39.08
Short Circuit Current -Isc(A)	13.83	11.06	11.06	13.91	11.13	11.13	13.99	11.19	11.19	14.07	11.26	11.26
Maximum Power Voltage -Vmp(V)	31.90	29.99	31.88	32.10	30.21	32.08	32.30	30.41	32.28	32.50	30.63	32.48
Maximum Power Current -Imp(A)	13.17	10.54	10.54	13.24	10.59	10.60	13.32	10.66	10.66	13.39	10.71	10.71
Module Efficiency(%)	21.51			21.76			22.02			22.28		
Power Tolerance(W)							(0, +4.99)					
Maximum System Voltage							1500V DC					
Maximum Series Fuse Rating							30 A					
Bifaciality							80±10%					

STC: Irradiance 1000 W/m² module temperature 25°C AM=1.5

NOCT: Irradiance 800W/m² ambient temperature 20°C module temperature 45°C wind speed: 1m/s

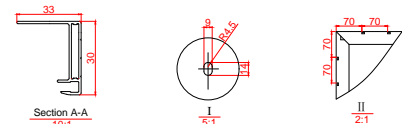
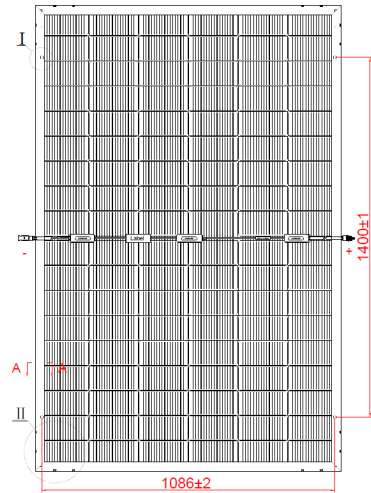
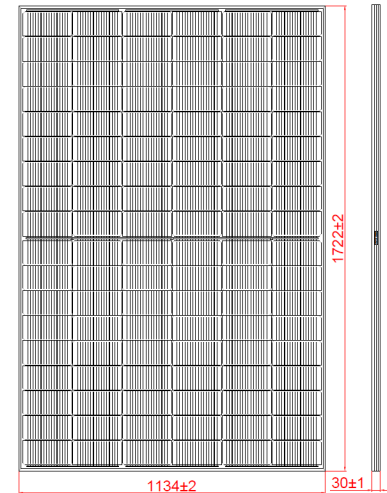
*Measuring tolerance: ±3%

Mechanical Specifications

External Dimension	1722 x 1134 x 30 mm
Weight	24.0 kg
Solar Cells	N-Type 182 x 91 mm(108 pcs)
Front Glass	2.0 mm AR coating semi-tempered glass
Back Glass	2.0 mm Semi-tempered glass
Frame	Black anodized aluminium alloy
Junction Box	IP68 / 3 diodes
Connector Type	MC4
Cable Type	12 AWG PV Wire(UL)
Cable Length	Portrait: 400 mm(+)/ 200 mm(-) Landscape: 1200 mm(+)/ 1200 mm(-) or customized length
Mechanical Load(Front)	5400 Pa / 113 psf*
Mechanical Load(Rear)	2400 Pa / 50 psf*

*Refer to SEG installation manual for details

Technical Drawing



*Refer to SEG installation manual for details

Temperature Characteristics

Pmax Temperature Coefficient	-0.30 %/°C
Voc Temperature Coefficient	-0.25 %/°C
Isc Temperature Coefficient	+0.046 %/°C
Operating Temperature	-40~+85 °C
Nominal Operating Cell Temperature (NOCT)	45±2 °C

Packing Configuration

Container	20'GP	40'HQ	40'HQ (For USA)
Pieces per Pallet	36	36	36
Pallets per Container	6	24	22
Pieces per Container	216	864	792

I-V Curve

