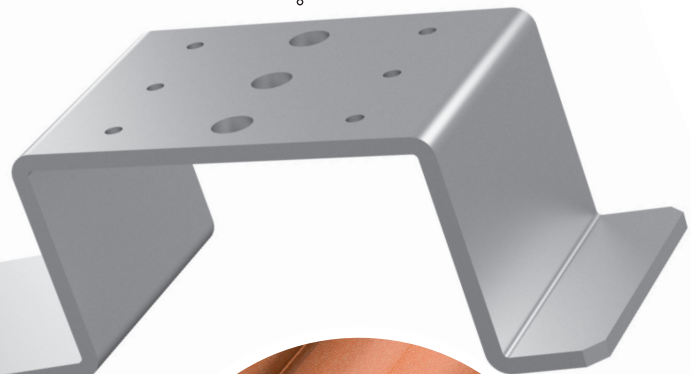


Rapid Installation

Pre-drilled for self-tapping screws or 1/4" bolts



One-Piece, No Tool Installation

Dual 3/4" EMT up-roof conduit runs on a single Tile Accessory Mount with attached one-hole straps. Run conduit at any angle across the roof.

Clean & Code Compliant Conduit Runs on Tile Roofs

Securely mount conduit or junction boxes in minutes. Pre-punched holes allow attachment of conduit strap or Pegasus J-box Wing. Run conduit at any angle across roof.



25-Year Warranty

Manufactured with advanced materials and coatings to outlast the roof itself



Code Compliant

Securely holds conduit 1" above roof surface



Mechanical Attachment

Mechanically secures conduit to roof



Universal Fit

Install without tools on all Flat-, S- and W-shaped roof tiles

1

Find location for mount and lift adjacent tiles to expose the top of the tile intended for the mount. Tile removal is not required



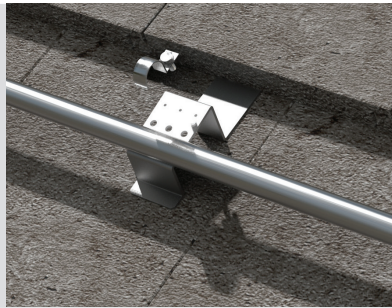
2

Insert mount between lifted tile and lower tile. Maneuver mount to ensure the "hooked" end of the mount is engaged with the top of the tile.



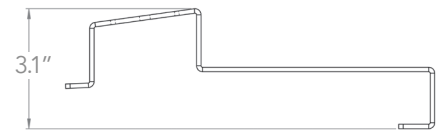
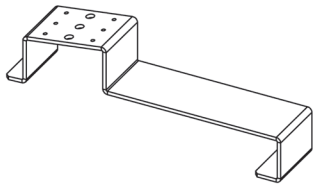
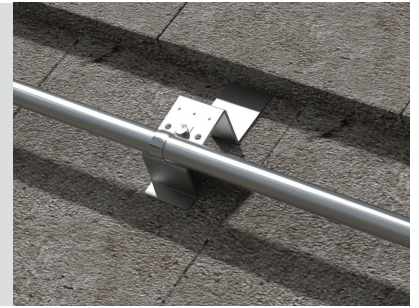
3

Lower lifted tile and adjust adjacent tiles if any tile spacing has been disturbed by the installation.



4

Use self-tapper screws or included hardware to mount conduit straps or junction box bracket. Refer to the NEC for required conduit spacing.



SPECIFICATIONS	TILE ACCESSORY MOUNT
Compatible Tile	Flat, S, W
Install Application	Up to two 3/4" EMT or one 1" EMT
Tools Required for Install	None
Compatible Fasteners	Self-tapping screws or 1/4" bolts
Box Quantity	6
Master Pack Quantity	48
SKU	PSTA-AM