

DESCRIPTION:  
**SNAPNRACK, SEALING WOOD SCREW, #14 X  
 2-1-4IN, 1-2IN HEX, SS**

DOC NUMBER:  
 SNR-DC-01417

SnapNrack®

PART NUMBER(S):  
 242-10010

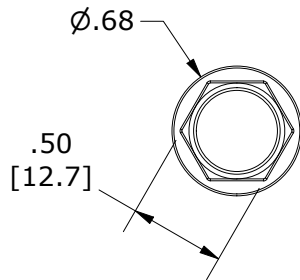
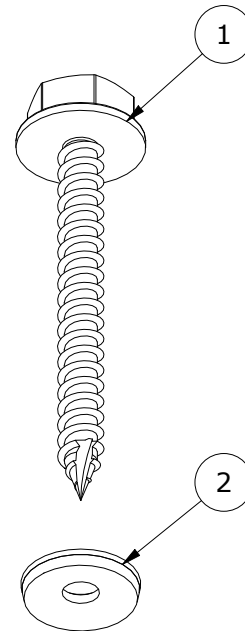
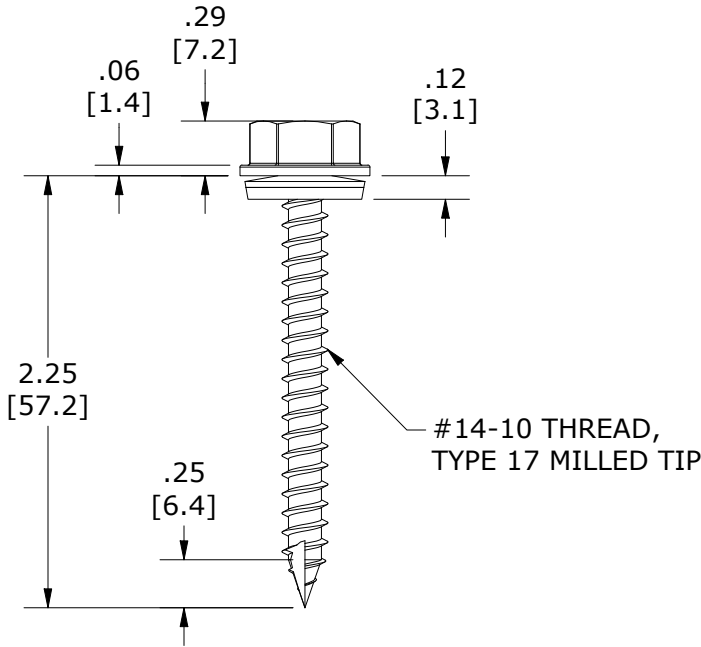
DRAWN BY:  
 M.AFFENTRANGER

SUNRUN INSTALLATION SERVICES INC.

UNITS: IN, LB, DEG [MM, KG, DEG]      SHEET: 1:1

REV:      DATE:  
**A**      11/14/2023

225 BUSH STREET, SUITE 1400 • SAN FRANCISCO, CA 94104 USA  
 PHONE (877) 732-2860 • CONTACT@SNAPNRACK.COM  
THE INFORMATION IN THIS DRAWING IS CONFIDENTIAL AND PROPRIETARY. ANY REPRODUCTION, DISCLOSURE, OR USE THEREOF IS PROHIBITED WITHOUT THE WRITTEN CONSENT OF SUNRUN SOUTH LLC.



PARTS LIST				
ITEM	QTY	PART NUMBER	DESCRIPTION	
1	1	164-20000	WOOD SCREW, FLANGE, #14-10 X 2-1-4IN OAL, FULL THREAD, 1-2IN HEX HEAD, SS	
2	1	165-06022	WASHER, METAL BONDED SEALING, FOR 1-4IN SCREW, 5-8IN OD	

MATERIALS:	300 SERIES STAINLESS STEEL, OUTDOOR RATED EPDM
DESIGN LOAD (LBS):	VARIES WITH SUBSTRATE, REFER TO ENGINEERING DOCUMENTS
ULTIMATE LOAD (LBS):	VARIES WITH SUBSTRATE, REFER TO ENGINEERING DOCUMENTS
TORQUE SPECIFICATION:	REFER TO INSTALLATION MANUAL
CERTIFICATION:	N/A
WEIGHT (LBS):	.04