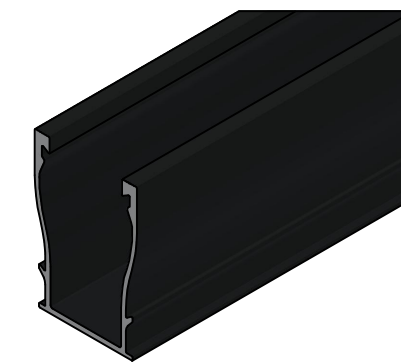


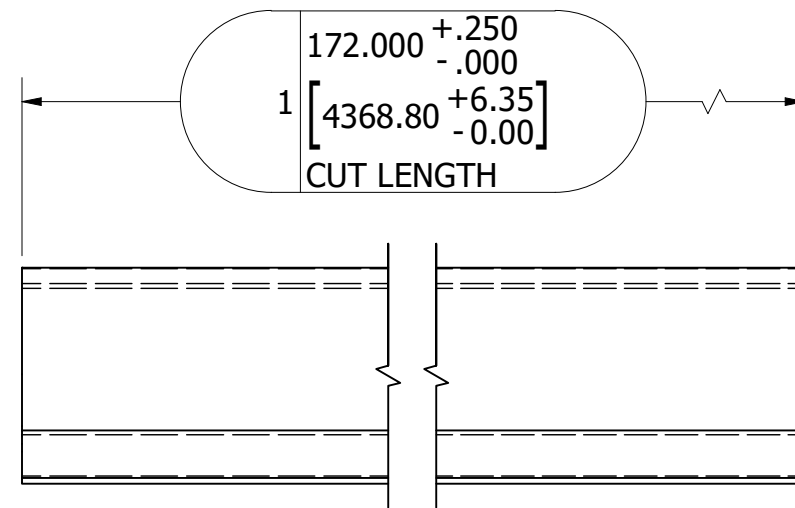
NOTES:

- PART TO BE MANUFACTURED TO ALUMINUM ASSOCIATION STANDARD TOLERANCES UNLESS OTHERWISE STATED
- ALL DIMENSIONS +/- .015, +/- 2° UNLESS OTHERWISE STATED
- REFER TO CAD MODEL FOR DIMENSIONS NOT SHOWN
- USE PART SYMMETRY
- ALL RADII .010 [0.25] UNLESS OTHERWISE STATED
- DEBURR ROUGH EDGES (NO HANGING BURR)
- CRITICAL DIMENSIONS IN **BOLD>**

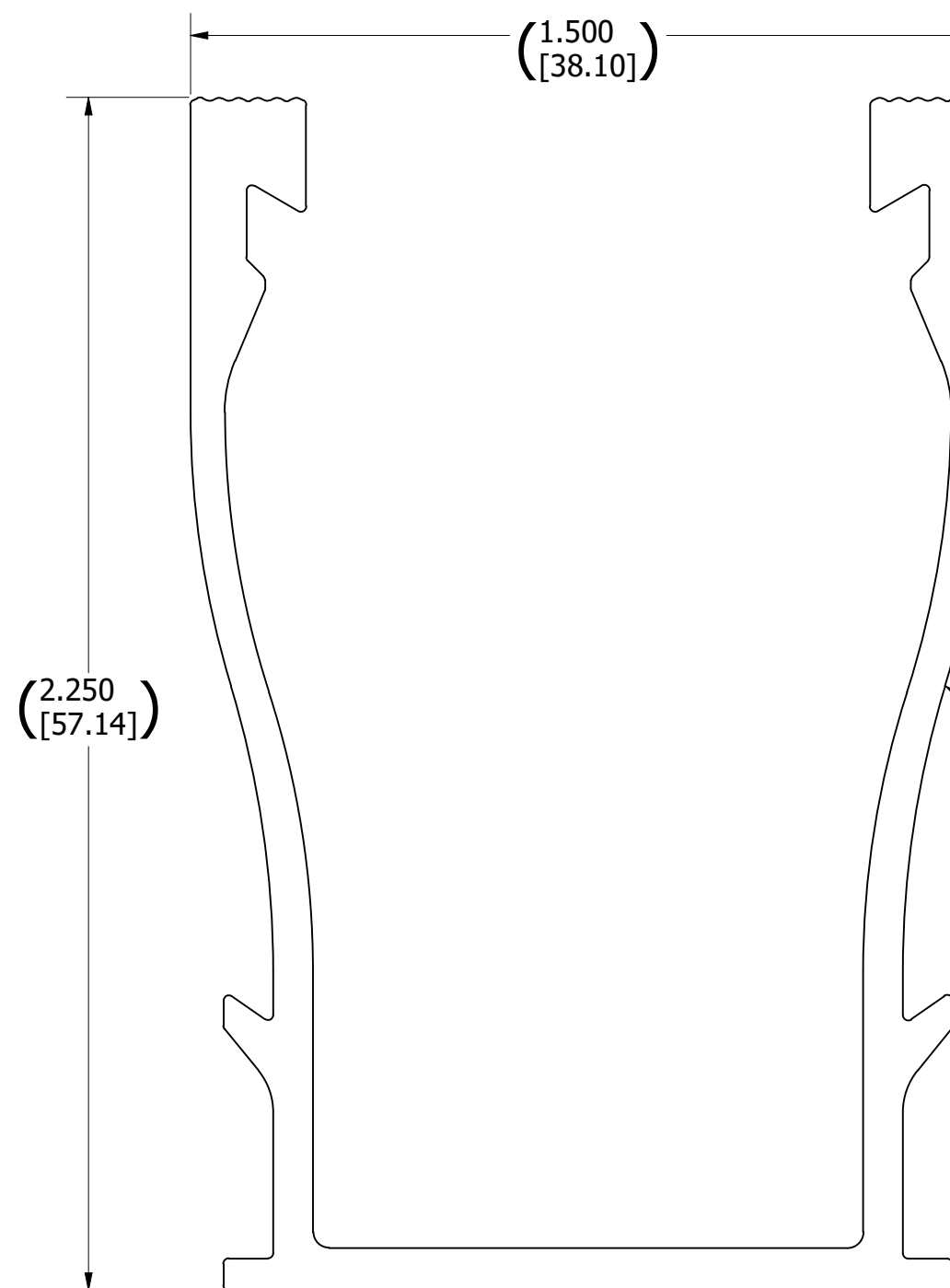
REVISION:		
A	12/7/2020	NEW ITEM DR.
B	2/1/2021	NU001175 MKW
C	9/7/2021	NU002165 MKW
D	4/10/2023	NU004706 MKW



ISO

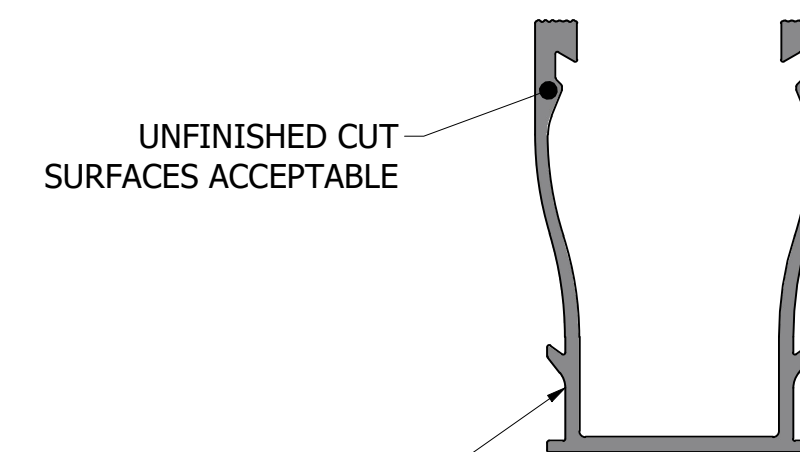


SIDE



FRONT

REFER TO **DWG# 232-02539** FOR PROFILE DIMENSIONS



EXPOSED SURFACES FINISHED TO SPECIFICATION LISTED IN "FINISH" BOX. NO VISIBLE CLAMP MARKS FROM ANODIZING PROCESS

EXPOSED SURFACES

	SUNRUN INSTALLATION SERVICES INC. 225 BUSH STREET, SUITE 1400 • SAN FRANCISCO, CA 94104 USA PHONE: (877) 732-2860 • CONTACT@SNAPNRACK.COM <small>THE INFORMATION IN THIS DRAWING IS CONFIDENTIAL AND PROPRIETARY. ANY REPRODUCTION, DISCLOSURE, OR USE THEREOF IS PROHIBITED WITHOUT THE WRITTEN CONSENT OF SNAPNRACK.</small>	DESIGNER: <u>D.RYAN</u>	SHEET NUMBER: <u>1:1</u>	SCALE: <u>DNS</u>	MATERIAL: <u>EXTRUDED: 6005-T5 ALUMINUM, PER ASTM B221</u>	FINISH: <u>ANODIZED TO AA-M12C22A34, DARK BRONZE</u>	PART WEIGHT: <u>8.659 lbmass</u>
		DRAFTER: <u>M.WATKINS</u>	SHEET SIZE: <u>C</u>	DATE: <u>4/10/2023</u>	UNITS OF MEASURE: <u>IN, LB, DEG [MM, KG, DEG]</u>	DESCRIPTION: <u>SNAPNRACK, UR-60 RAIL, 172IN, BLACK</u>	PART NUMBER: <u>232-02541</u>
APPROVED BY: <u>W.ARBUCKLE</u>							