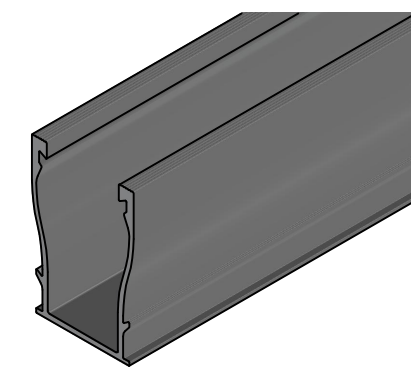
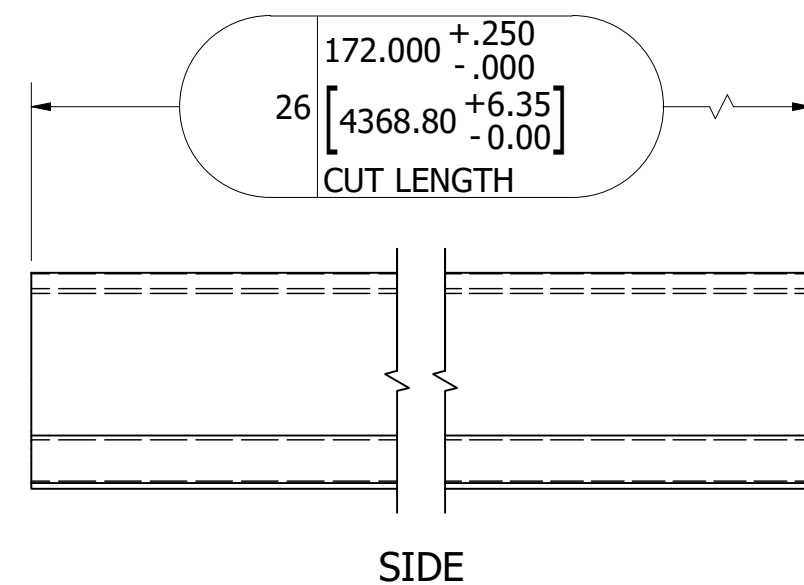


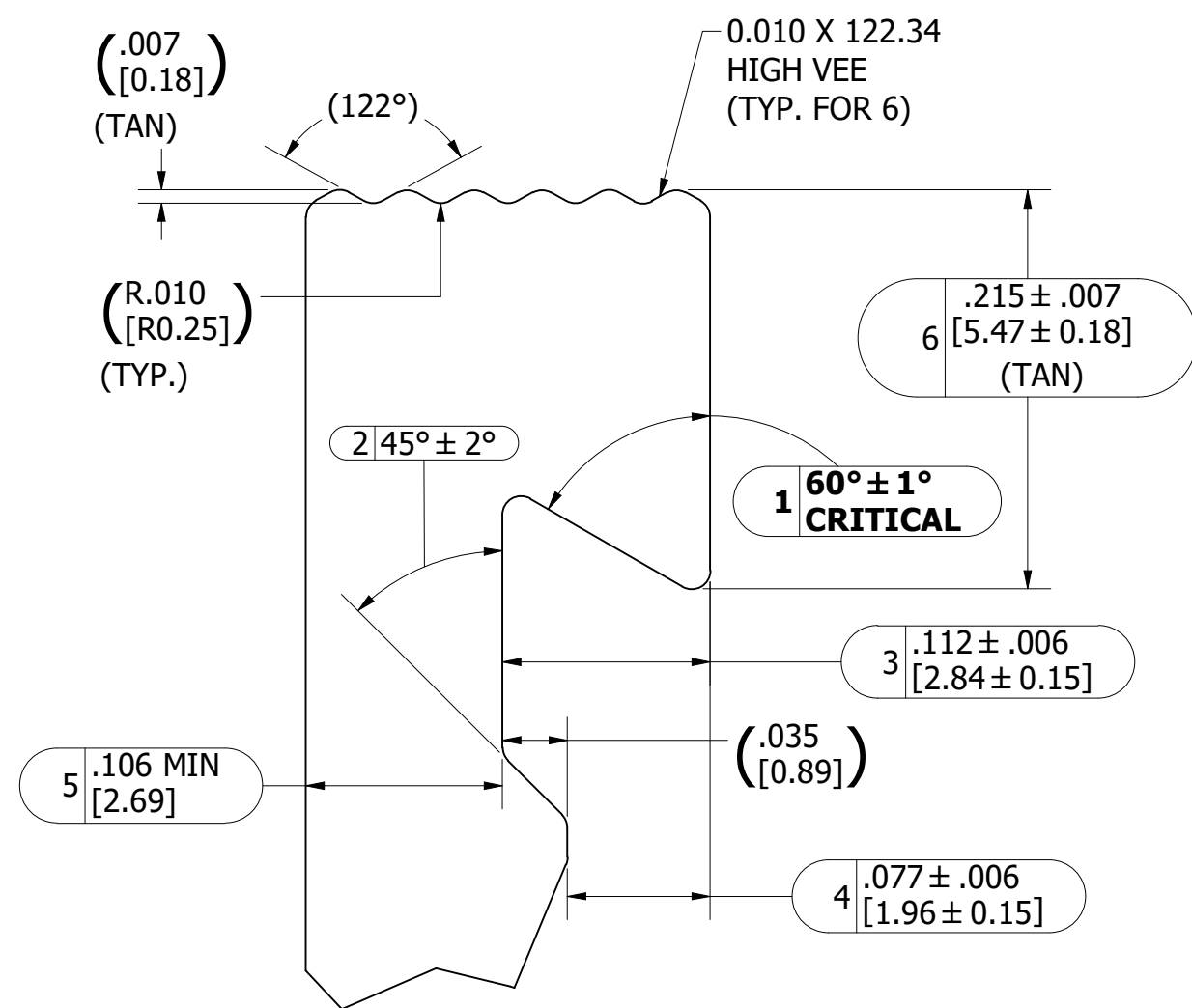
NOTES:

- PART TO BE MANUFACTURED TO ALUMINUM ASSOCIATION STANDARD TOLERANCES UNLESS OTHERWISE STATED
- ALL DIMENSIONS +/- .015, +/- 2° UNLESS OTHERWISE STATED
- REFER TO CAD MODEL FOR DIMENSIONS NOT SHOWN
- USE PART SYMMETRY
- ALL RADII .010 [0.25] UNLESS OTHERWISE STATED
- DEBURR ROUGH EDGES (NO HANGING BURR)
- CRITICAL DIMENSIONS IN **BOLD**

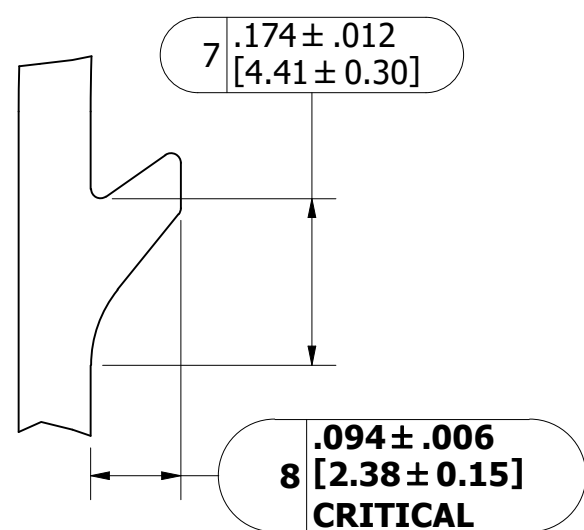
REVISION:	A	12/11/2020	NEW ITEM	DR.
	B	2/1/2021	NU001175	MKW
	C	9/7/2021	NU002165	MKW
	D	4/10/2023	NU004706	MKW



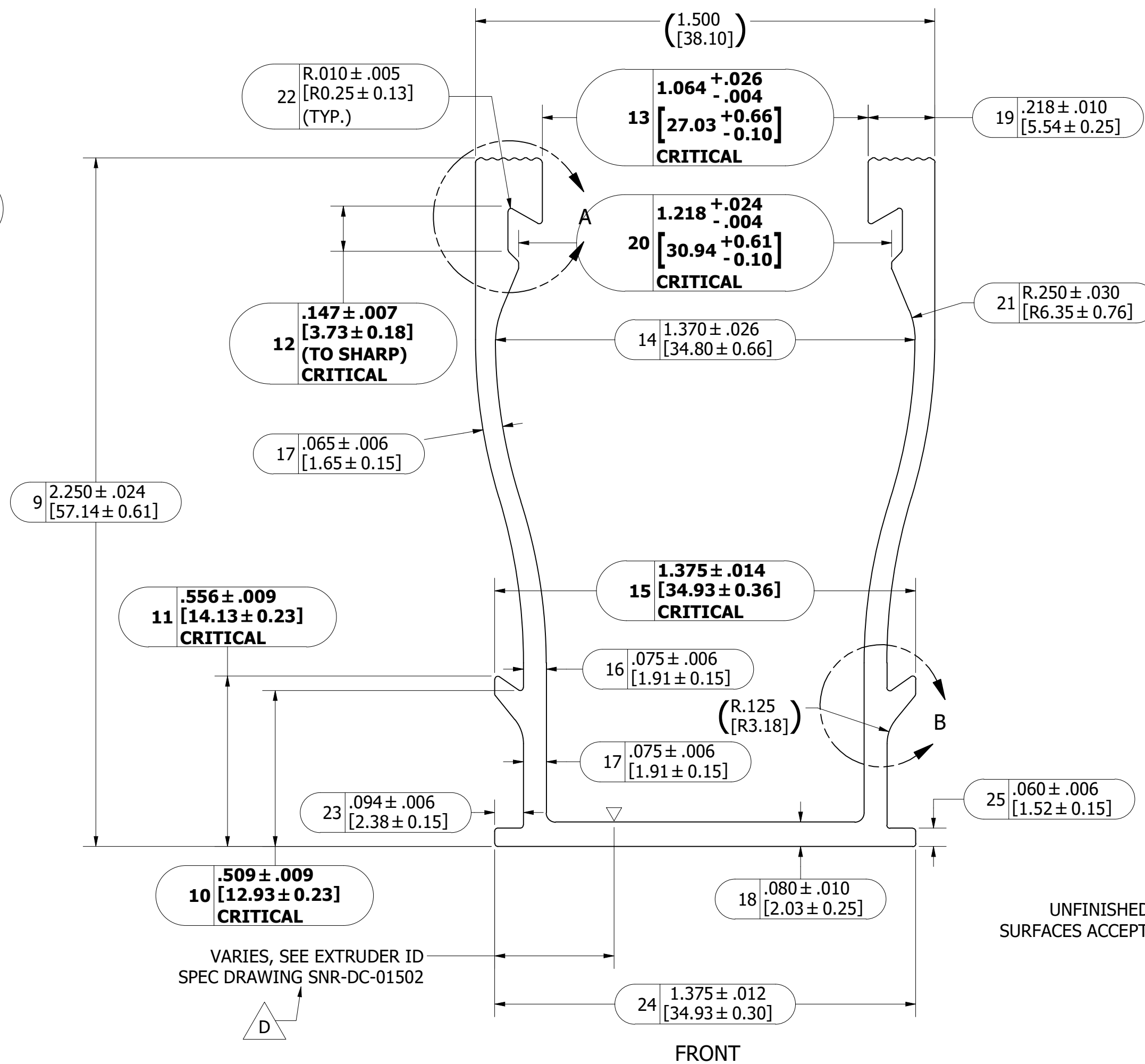
ISO



DETAIL A



DETAIL B

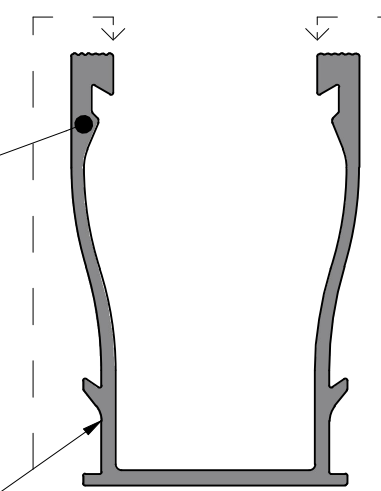


FRONT

VARIES, SEE EXTRUDER ID SPEC DRAWING SNR-DC-01502



UNFINISHED CUT SURFACES ACCEPTABLE



EXPOSED SURFACES

EXPOSED SURFACES FINISHED TO SPECIFICATION LISTED IN "FINISH" BOX. NO VISIBLE CLAMP MARKS FROM ANODIZING PROCESS

▽ EXTRUDER ID MARK



SUNRUN INSTALLATION SERVICES INC.
 225 BUSH STREET, SUITE 1400 • SAN FRANCISCO, CA 94104 USA
 PHONE (877) 732-2860 • CONTACT@SNAPNRACK.COM
 THE INFORMATION IN THIS DRAWING IS CONFIDENTIAL AND PROPRIETARY. ANY REPRODUCTION, DISCLOSURE, OR USE THEREOF IS PROHIBITED WITHOUT THE WRITTEN CONSENT OF SNAPNRACK.

DESIGNER: D.RYAN
 DRAFTER: M.WATKINS
 APPROVED BY: W.ARBUCKLE

SHEET NUMBER: 1:1
 SHEET SIZE: C

SCALE: DNS
 DATE: 4/10/2023

MATERIAL: EXTRUDED: 6005-T5 ALUMINUM, PER ASTM B221
 UNITS OF MEASURE: IN, LB, DEG [MM, KG, DEG]

FINISH: MILL

DESCRIPTION: SNAPNRACK, UR-60 RAIL, 172IN, MILL

PART NUMBER: 232-02539

PART WEIGHT: 8.659 lbmass

REV D