

DESCRIPTION:
SNAPNRACK, TDS, ULTRA RAIL SPEEDSEAL FOOT

DOC NUMBER:
 SNR-DC-01345

SnapNrack®

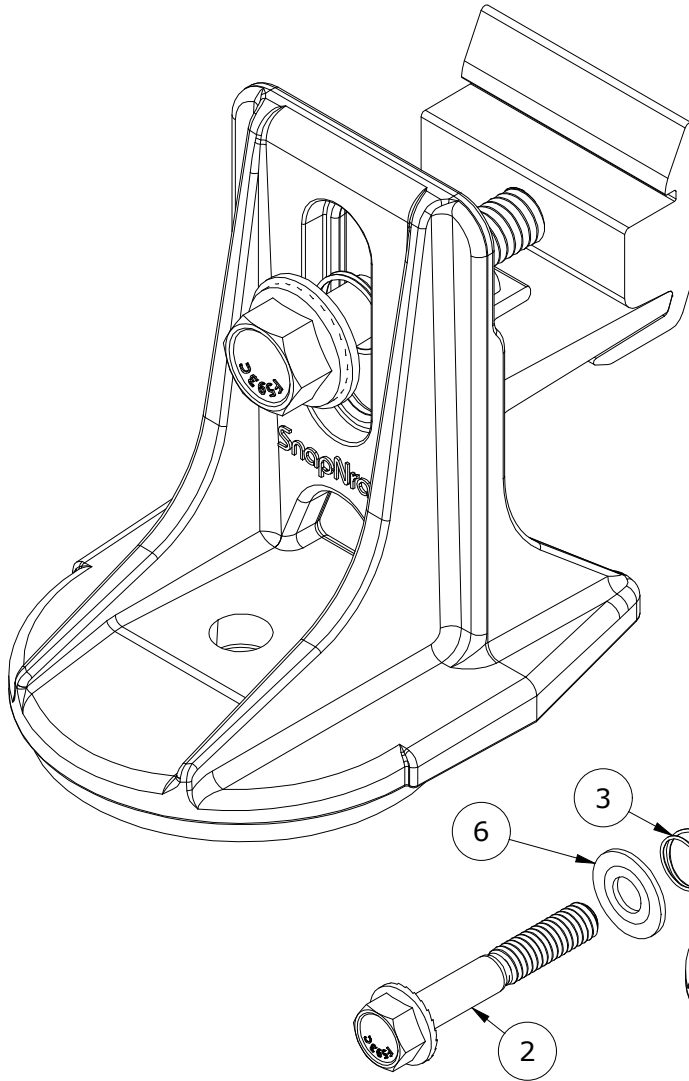
PART NUMBER(S):
 242-02163, 242-02167

DRAWN BY:
 WULFEKOETTER

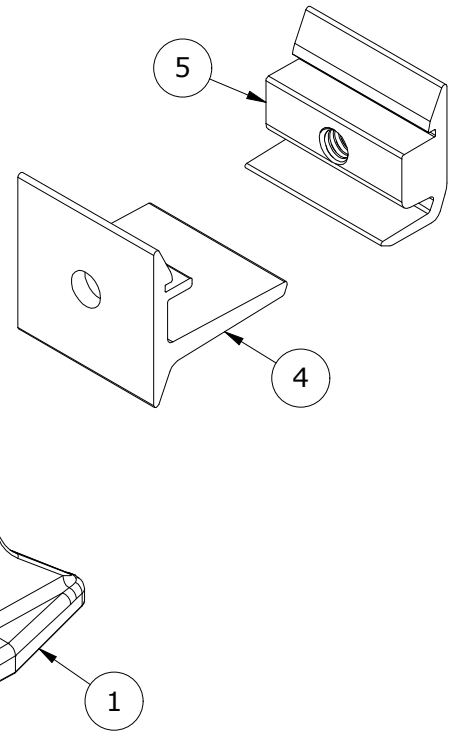
REV: **B** DATE:
 1/20/2023

SUNRUN INSTALLATION SERVICES INC.
 225 BUSH STREET, SUITE 1400 • SAN FRANCISCO, CA 94104 USA
 PHONE (877) 732-2860 • CONTACT@SNAPNRACK.COM
THE INFORMATION IN THIS DRAWING IS CONFIDENTIAL AND PROPRIETARY. ANY REPRODUCTION, DISCLOSURE, OR USE THEREOF IS PROHIBITED WITHOUT THE WRITTEN CONSENT OF SUNRUN SOUTH LLC.

UNITS: IN, LB, DEG [MM, KG, DEG] SHEET: 1:2



SKU	COLOR
242-02163	SILVER
242-02167	BLACK



PARTS LIST		
ITEM	QTY	DESCRIPTION
1	1	SNAPNRACK, SPEEDSEAL FOOT, BASE, SEALING, SILVER / BLACK
2	1	BOLT, FLANGE, SERRATED, 5/16IN-18 X 2IN, SS
3	1	SNAPNRACK, RL UNIVERSAL, MOUNT SPRING, SS
4	1	SNAPNRACK, ULTRA RAIL MOUNT THRU PRC, SILVER / BLACK
5	1	SNAPNRACK, ULTRA RAIL MOUNT TAPPED PRC, SILVER / BLACK
6	1	5-16IN X 3-4IN SS FLAT WASHER

MATERIALS:	DIE CAST A380 ALUMINUM, 6000 SERIES ALUMINUM, STAINLESS STEEL, FOAM
DESIGN LOAD (LBS):	802 UP, 1333 DOWN, 357 SIDE
ULTIMATE LOAD (LBS):	2118 UP, 4006 DOWN, 1331 SIDE
TORQUE SPECIFICATION:	12 FT-LBS
CERTIFICATION:	UL 2703, FILE E359313; WIND-DRIVEN RAIN TEST FROM SUBJECT UL 2582
WEIGHT (LBS):	0.45

DESCRIPTION:
SNAPNRACK, TDS, ULTRA RAIL SPEEDSEAL
FOOT

DOC NUMBER:
SNR-DC-01345

SnapNrack®

PART NUMBER(S):

242-02163, 242-02167

DRAWN BY:
WULFEKOETTER

REV:

B

DATE:

1/20/2023

SUNRUN INSTALLATION SERVICES INC.

225 BUSH STREET, SUITE 1400 • SAN FRANCISCO, CA 94104 USA
PHONE (877) 732-2860 • CONTACT@SNAPNRACK.COM

THE INFORMATION IN THIS DRAWING IS CONFIDENTIAL AND PROPRIETARY. ANY
REPRODUCTION, DISCLOSURE, OR USE THEREOF IS PROHIBITED WITHOUT THE
WRITTEN CONSENT OF SUNRUN SOUTH LLC.

UNITS: IN, LB, DEG [MM, KG, DEG]

SHEET: 2:2

