

NOTES:

1. ENSURE CLAMP CAN BE INSTALLED INTO SNAPRACK ULTRA RAIL AND EASILY SLIDES

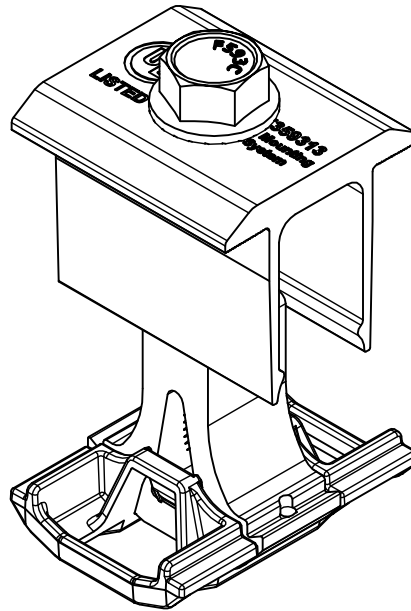
2. ENSURE CLAMP CAN BE TIGHTENED ONTO BOTH 46MM AND 30MM MODULES WHEN INSTALLED IN ULTRA RAIL

3. UNITS:

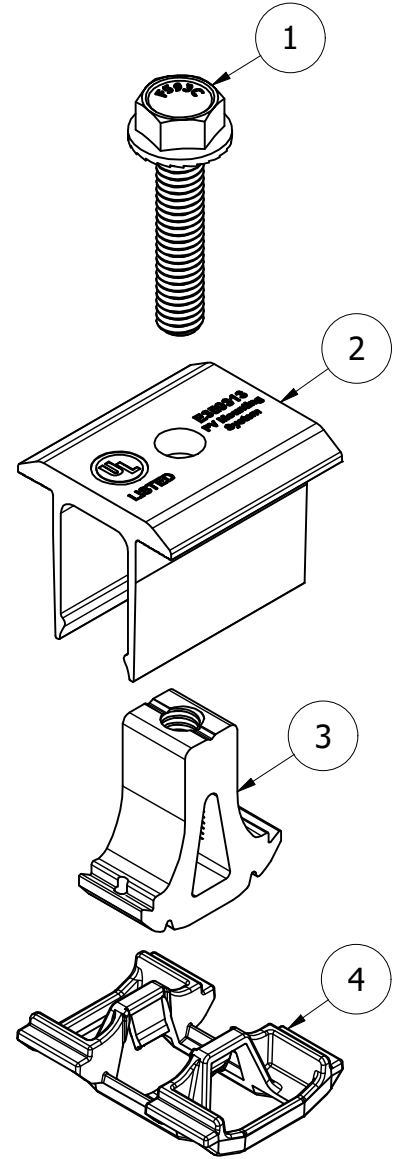
IN, LB, DEG

[MM, KG, DEG]

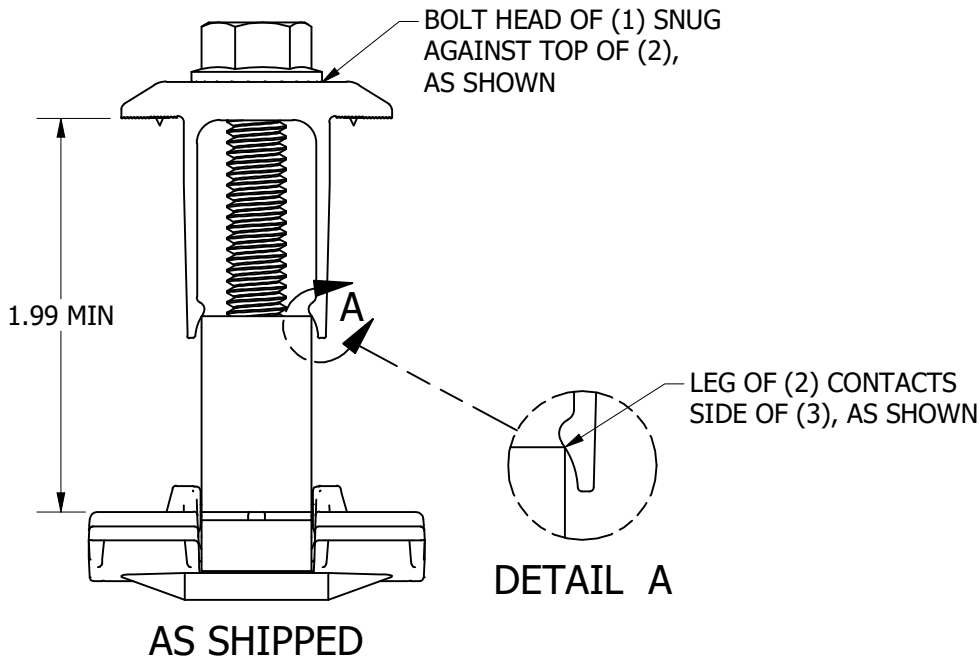
4. PART WEIGHT: .16 LB



ISO



EXPLODED



AS SHIPPED

PARTS LIST				
ITEM	QTY	PART NUMBER	DESCRIPTION	
1	1	162-01102	BOLT, FLANGE SERRATED, 5-16IN-18 X 1-1-2IN, BLACK, SS	
2	1	232-02063B	SNAPRACK, ULTRA MID CLAMP, TOP, BLACK	
3	1	232-10004	SNAPRACK, ULTRA RAIL MID CLAMP, KEYED BASE	
4	1	232-10005	SNAPRACK, ULTRA RAIL MID CLAMP, EXTENSION	

DESCRIPTION:

SNAPRACK, ULTRA RAIL MID CLAMP, BLACK

DRAWN BY: M.AFFENTRANGER

APPROVED BY: W.ARBUCKLE

REVISION:

A	11/5/2019	NU001078	MJA
B	12/18/2019	NU001086	MJA
C	10/29/2021	NU002429	MKW

SnapRack™
Solar Mounting Solutions

Sunrun South LLC

595 MARKET STREET, 29TH FLOOR • SAN FRANCISCO, CA 94105 USA
PHONE (415) 580-6900 • FAX (415) 580-6902

PART NUMBER:
242-02071

SCALE:
DNS

REV:
C

THE INFORMATION IN THIS DRAWING IS CONFIDENTIAL AND PROPRIETARY. ANY REPRODUCTION, DISCLOSURE, OR USE THEREOF IS PROHIBITED WITHOUT THE WRITTEN CONSENT OF SUNRUN SOUTH LLC.