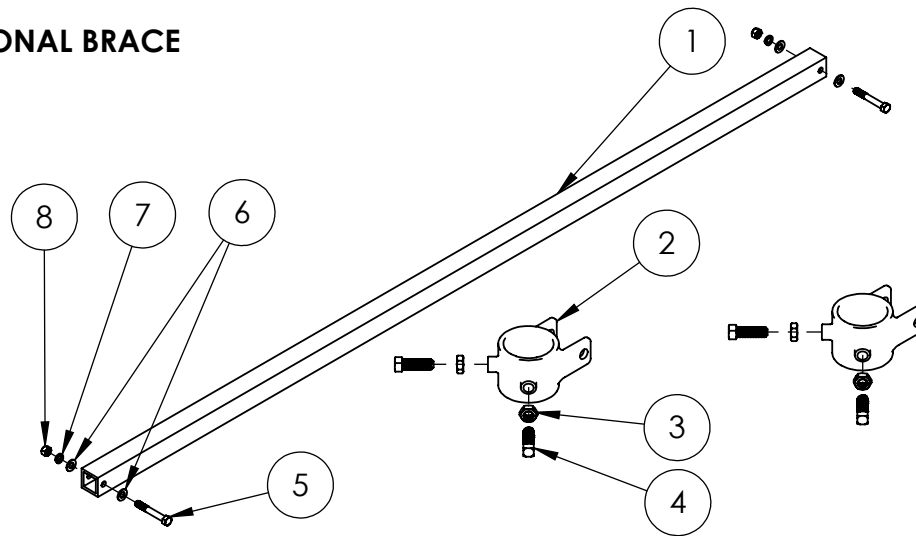


SGA DIAGONAL BRACE

Item Number	Component	Qty
1	BRACE, TUBE CBR SQ	1
2	SLEEVE, PIPE BRACE	1
3	NUT, JAM 1/2-13 STEEL HDG	4
4	SCREW, SET 1/2-13 X 1.50 CUP PNT	4
5	BOLT, 1/2-13 HEX GALV	2
6	WASHER, FLAT 1/2 GALV	4
7	WASHER, LOCK SPRING 1/2 GALV	2
8	NUT, HEX 1/2-13 GALV	2

GM DIAGONAL BRACE (ITEM NUMBER 1)

Part Number	Description	SQ Tube Length	SQ Tube Width
GM-DB2-TB01-M1	GM Diagonal Brace, 2" Square Tube, 88.5" LG (For 2" Pipe)	88.5"	2.0"
GM-DB3-TB01-M1	GM Diagonal Brace, 2.5" Square Tube, 87.0" LG (For 3" Pipe)	87.0"	2.5"
GM-DB2-TB02-M1	GM Diagonal Brace, 2" Square Tube, 106.5" LG (For 2" Pipe)	106.5"	2.0"
GM-DB3-TB02-M1	GM Diagonal Brace, 2.5" Square Tube, 105.0" LG (For 3" Pipe)	105.0"	2.5"

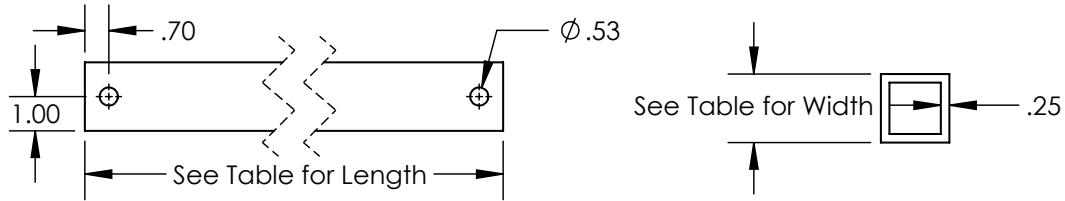
GM SLEEVE (ITEM NUMBER 2)

Part Number	Description
GM-DB2-SLV01-M1	GM 2" Sleeve, Diagonal Brace
GM-DB3-SLV01-M1	GM 3" Sleeve, Diagonal Brace

GM DIAGONAL BRACE HARDWARE (ITEM NUMBERS 3,4,5,6,7, and 8)

Part Number	Description
GM-DB-HW01-M1	GM Diagonal Brace Hardware (For 2" & 3" Pipe)

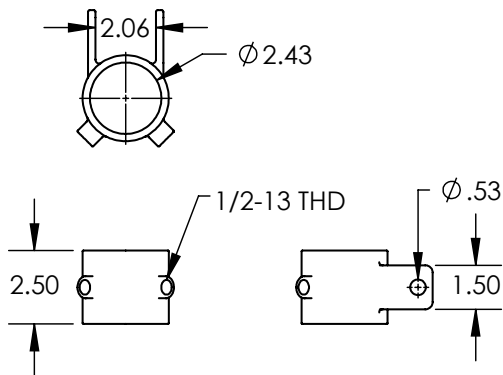
1) Brace, Tube CBR SQ



Property	Value
Material	Aluminum
Finish	Mill

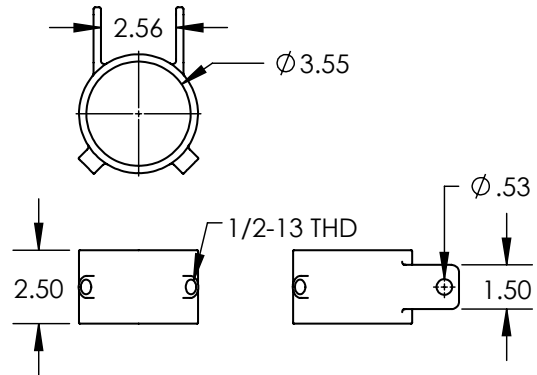
2) Sleeve, Pipe Brace

SGA 2"



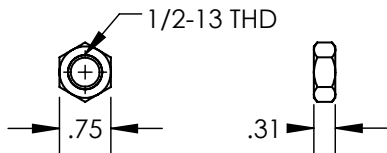
Property	Value
Material	Steel
Finish	Hot-Dip Galvanized

SGA 3"



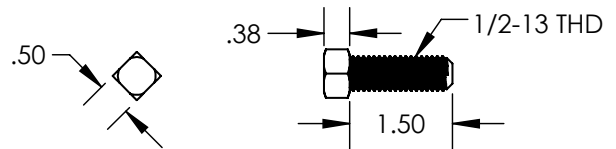
Property	Value
Material	Steel
Finish	Hot-Dip Galvanized

3) Nut, Jam 1/2-13 Steel HDG



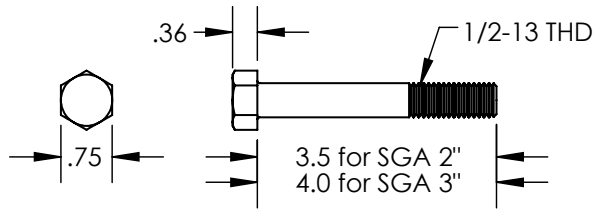
Property	Value
Material	Steel
Finish	Hot-Dip Galvanized

4) Screw, Set 1/2-13 x 1.50 Cup PNT



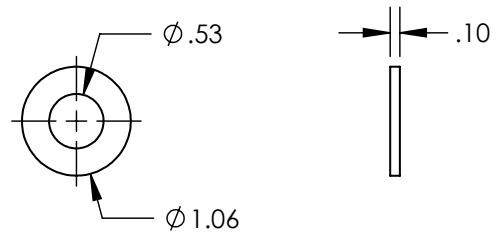
Property	Value
Material	Steel
Finish	Hot-Dip Galvanized

5) Bolt, 1/2-13 Hex Galv



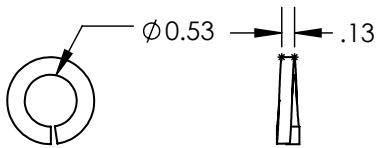
Property	Value
Material	Steel
Finish	Hot-Dip Galvanized

6) Washer, Flat 1/2 Galv



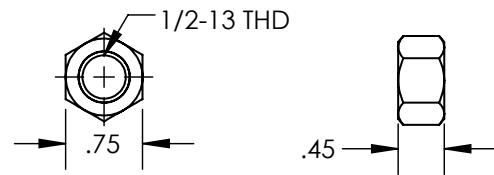
Property	Value
Material	Steel
Finish	Hot-Dip Galvanized

7) Washer, Lock Spring 1/2 Galv



Property	Value
Material	Steel
Finish	Hot-Dip Galvanized

8) Nut, Hex 1/2-13 Galv



Property	Value
Material	Steel
Finish	Hot-Dip Galvanized