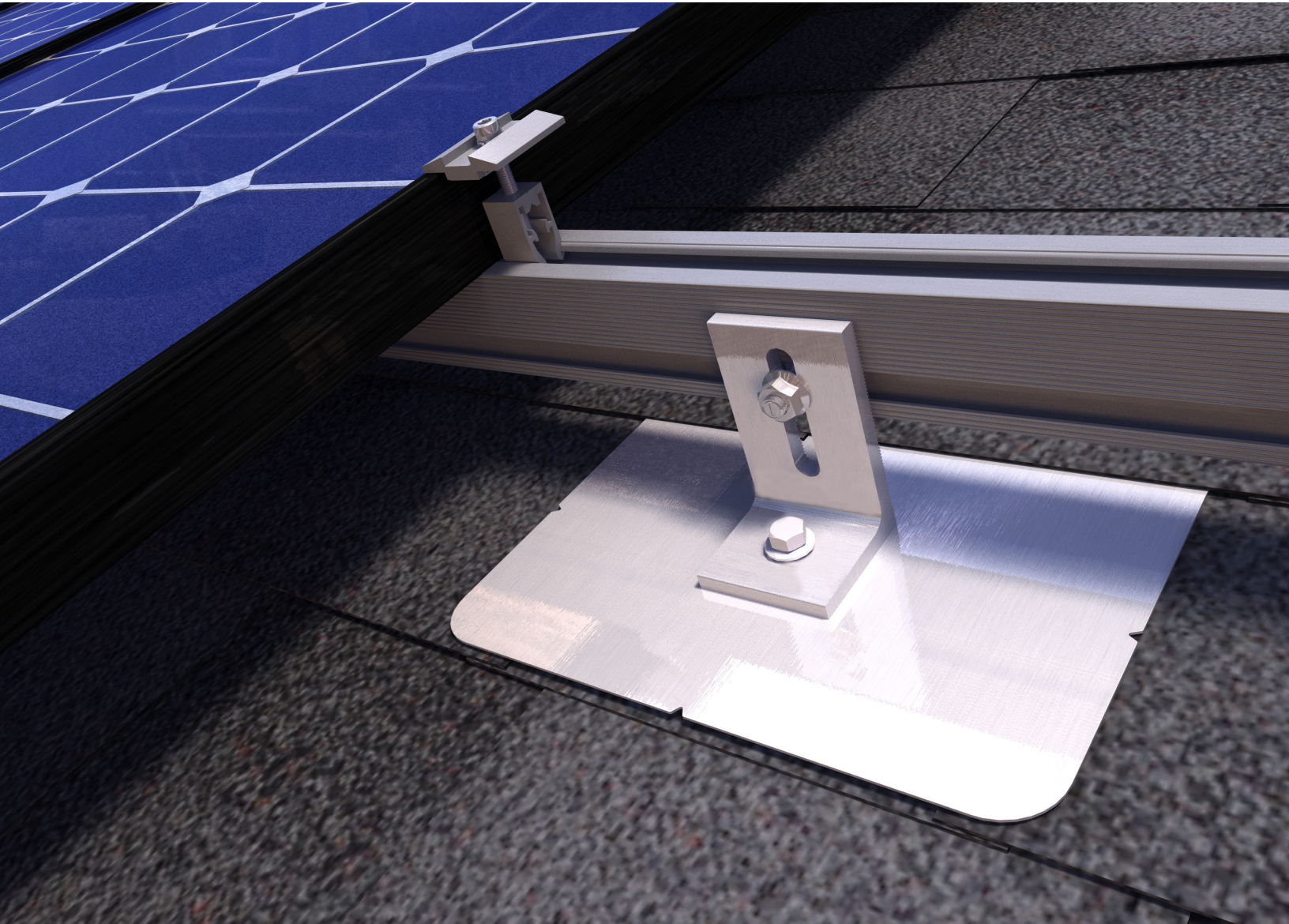


# QRail™ Series

Rail System with QClick™ Technology



Cost-Effective Mounting and Racking For All Roofs

**Quick Mount PV®**  
RESPECT THE ROOF



## QRail™ — Fully Integrated Mounting and Racking System

The QRail Series is a strong and versatile solar array mounting system that provides unrivaled benefits to solar designers and installers. Combined with Quick Mount PV's industry-leading waterproof mounts, QRail offers a complete racking solution for mounting solar modules on any roof.



Easily design array configurations with the QDesign software application. Generate complete engineering reports and calculate a precise bill of materials for all the mounting, racking and accessories needed for a complete solar array.

## Comprehensive, One-Source Solution

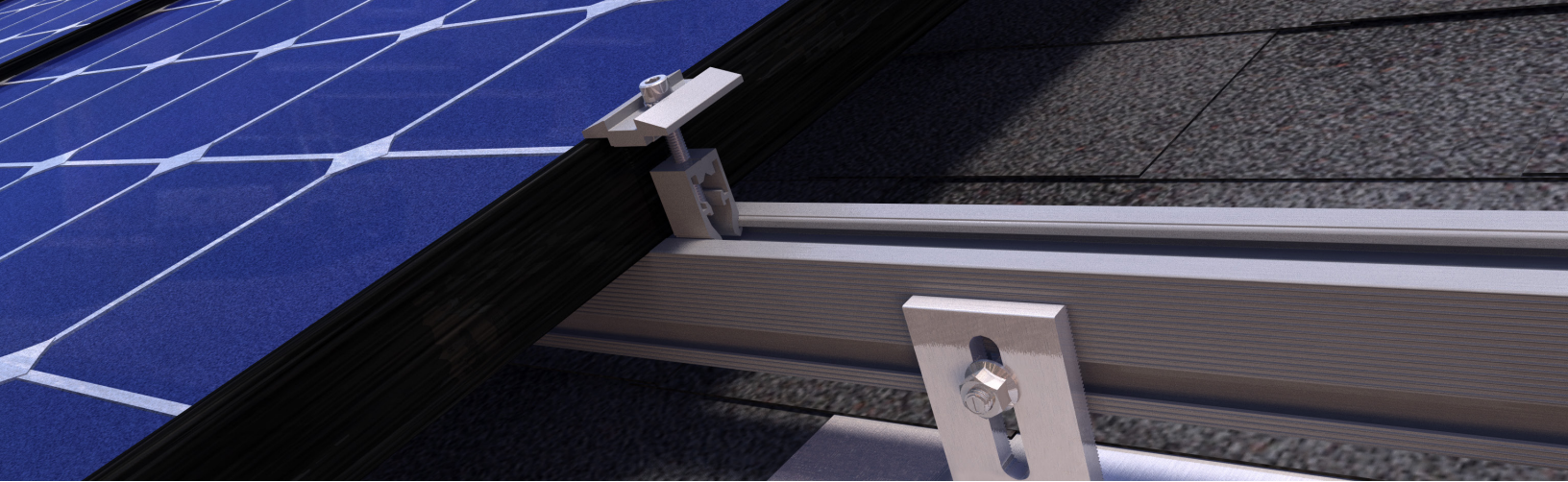
QRail, together with Quick Mount PV's waterproof mounting products, provides the benefit of a single-sourced, seamlessly integrated rooftop installation that works with all roof types — composition/asphalt shingles, flat or curved tile, metal shingle, shake, slate and low slope roofs. The QRail system also works with any roof attachment system for maximum flexibility.

## Superior Strength and Versatility

QRail is engineered for optimal structural performance. The system is certified to UL 2703, fully code compliant and backed by a 25-year warranty. QRail is available in Light, Standard and Heavy versions to match all geographic locations. QRail is compatible with virtually all modules and works on a wide range of pitched roof surfaces. Modules can be mounted in portrait or landscape orientation in standard or shared-rail configurations.



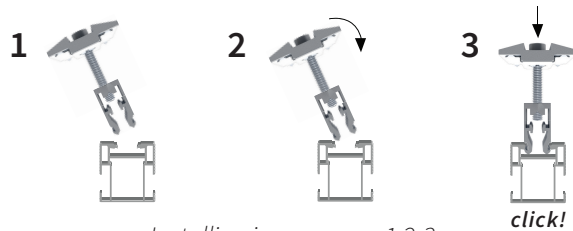
*QRails come in two lengths —  
168 inches (14 ft) and 208 inches (17.3 ft)  
Mill and Black Finish*



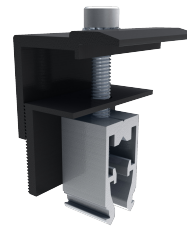
## Fast, Simple Installation: It Just Clicks

### QClick™ Technology

The universal mid and end clamps use patented QClick technology to simply “click” into the rail channel and remain upright, ready to accept the module. The pre-assembled clamps fit virtually all module frames and require no extra hardware, eliminating pre-loading and reducing installation time.

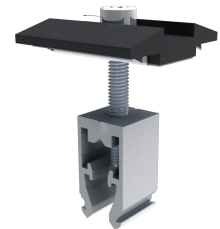


*Installing is as easy as 1-2-3*



**UNIVERSAL END CLAMP**

*2 clamps for modules from 30-45mm or 38-50mm thick*



**UNIVERSAL BONDED MID CLAMP**

*2 clamps for modules from 30-45mm or 38-50mm thick*

### QSplice™ Technology

QRail’s innovative internal QSplice installs in seconds, requiring no tools or screws. Simply insert QSplice into the rail and slide the other rail on to create a fully structural, bonded splice. An external splice is also available.



*Installs in seconds — no tools or hardware required*



## Fully Integrated Electrical Bonding

The QRail system provides an integrated electrical bonding path, ensuring that all exposed metal parts and the solar module frames are electrically connected. All electrical bonds are created when the components are installed and tightened down.

# Quick Mount PV<sup>®</sup>

RESPECT THE ROOF

2700 Mitchell Drive  
Walnut Creek, CA 94598

[www.quickmountpv.com](http://www.quickmountpv.com)  
925-478-8269



CB Feb 2018



**Intertek**  
4008516

UL STD 2703



Printed on 100% recycled paper using vegetable-based inks.