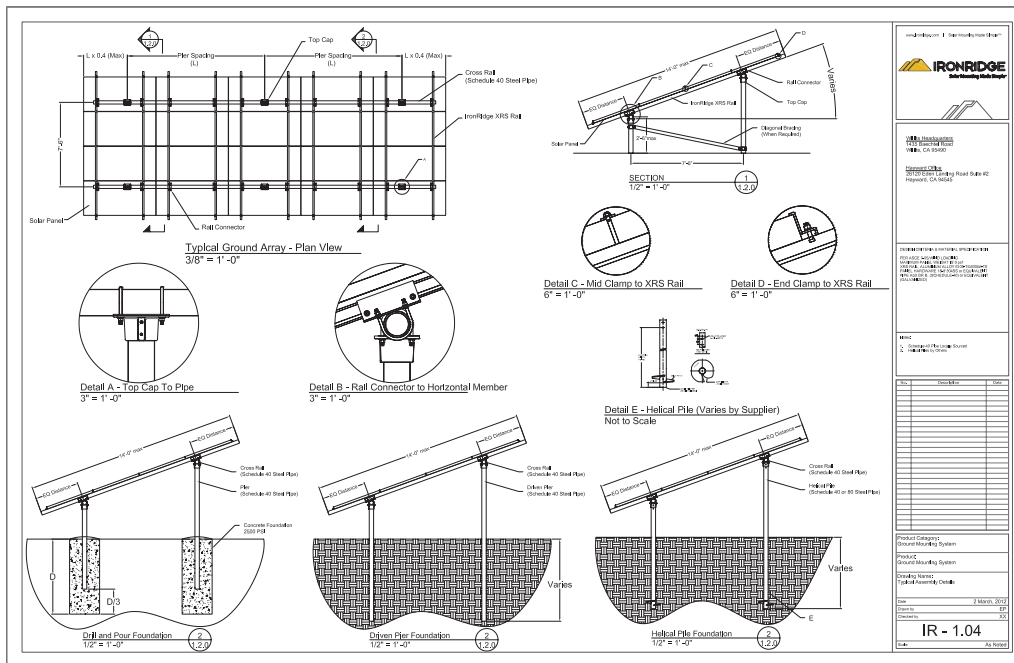


Ground Mounting Overview



The IronRidge Ground Mount System scales to support a wide range of site and terrain challenges. This system consists of components that allow for installer-supplied steel pipe to combine with our Standard Rail assembly for simple, rapid, cost effective ground mounting.



[Download AutoCAD File](#)
[Download PDF Preview](#)

Top Caps



Item Number	Description
70-0200-SGA	SGA Top Cap at 2", Mill
70-0300-SGA	SGA Top Cap at 3", Mill

Our heavy duty cast aluminum IronRidge Top Caps secure quickly and easily to schedule 40 pipe with 2 set screws. Available in sizes that fit either 2" or 3" schedule 40 pipe, this Top Cap supports cross (schedule 40) piping with U-bolt hardware. The top caps are manufactured using cast aluminum ALMAG 535 and come with a mill finish. As a reminder, schedule 40 pipe not included. (See page 36 for more information).

2" schedule 40 pipe outside diameter = 2.375" (2 3/8")

3" schedule 40 pipe outside diameter = 3.5"

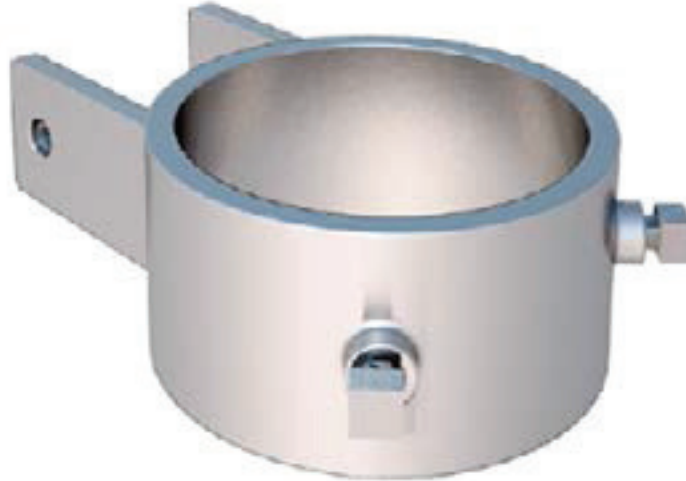
Rail Connectors



Item Number	Description
29-7001-001	SGA Rail Connector at 2"
29-7001-000	SGA Rail Connector at 3"

Our Rail Connectors secure IronRidge Standard Rails to the schedule 40 horizontal cross pipes. Each Standard Rail requires two connectors to create a secure attachment. Available for both 2" and 3" sizes, these Rail Connectors are manufactured using extruded 6105-T5 aluminum. Review the images on the section overview for added context.

Diagonal Brace Assembly Kit



Item Number	Description
70-0200-CBR	SGA 2" (7.5') Brace Assembly (bulk)
70-0300-CBR	SGA 3" (7.5') Brace Assembly (bulk)

This optional assembly kit is for installations that require extra support. This Diagonal Brace Kit includes the brace, sleeves, and hardware for installation between one north and south pair of support legs.

Schedule 40 Pipe Summary

To save installers money, we have engineered the use of locally sourced 2" or 3" schedule 40 steel pipe as the primary structural element of our Ground Array System. By allowing customers to source this pipe locally, installers benefit from reduced shipping, product and inventory costs, and shortened delivery times. We provide intuitive online tools that will help you quickly and easily craft a bill of materials to simplify local pipe costing and purchasing. When additional assistance is needed to address ground mounting your array, please contact our customer service team at 800-227-9523, or at service@ironridge.com. Many IronRidge customers prefer to use our online Ground Array Configurator application found by clicking the 'Tools' tab at www.ironridge.com

A soils report is widely considered the most reliable and accurate method for determining the type and depth of piers for any ground array system. Soils reports can be obtained through a Geotechnical Engineer. A commonly relied upon alternative to obtaining a site-specific soils report is to use the IBC 2006 Table 1804.2. The advantage of purchasing a site specific soils report is that the information provided often results in shorter embedment depths, thus lowering both material and installation cost.

In many cases installers rely on our easy to use PE stamped certification and post/ pier installation guides that our engineering staff has made available for download. You will find these and other IronRidge Ground Array System documents located at ironridge.com/products/groundmounting/systemsupport.

*Always check local building codes for pier mounting requirements specific to your location.

