



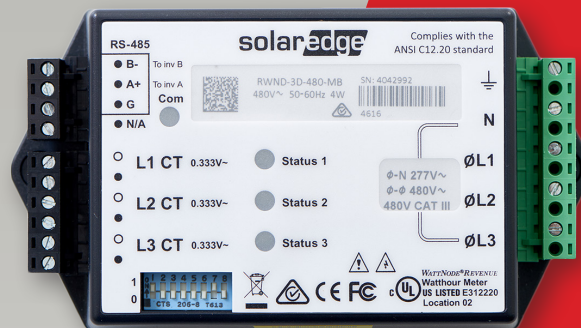
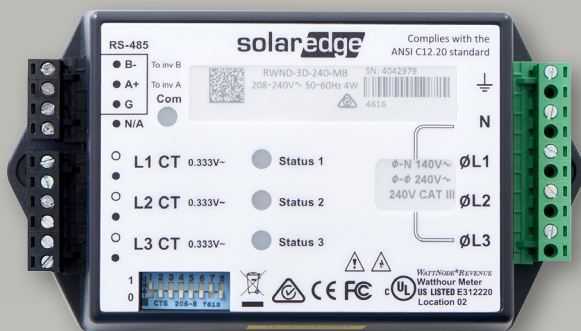
SolarEdge Three Phase Revenue Grade Meters for Commercial Installations

for North America

SE-RWND-3D-208-MB

SE-RWND-3D-480-MB

ACCESSORIES



SolarEdge Three Phase Revenue Grade Meters for Commercial Installations

- High accuracy revenue grade meter readings for production monitoring
- Small and easy to install - fits in standard electrical panel
- Supports commercial and utility-size installations
- Supports RS485 120Ω line termination
- Communicates over RS485 to provide monitoring data



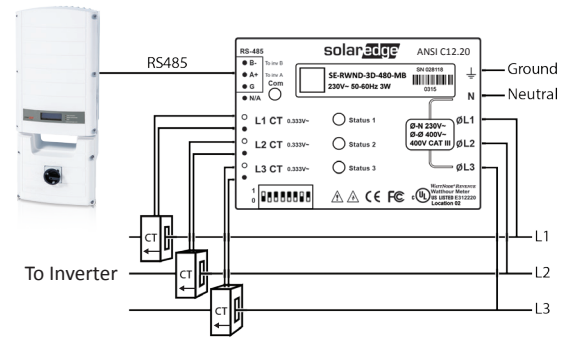
SolarEdge Three Phase Revenue Grade Meter for Commercial Installations

for North America SE-RWND-3D-208-MB / SE-RWND-3D-480-MB

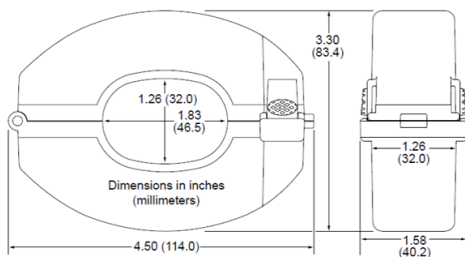
When ordering a meter, order current transformers as well:

CURRENT TRANSFORMER MODELS(*)	CLASS	RATED RMS CURRENT	DIMENSIONS (INTERNAL/ EXTERNAL)
SEACTL-1250-150-C3	0.3	150 A	1.83 x 1.26 in. / 4.50 x 3.30 in.
SEACTL-1250-300-C3	0.3	300 A	
SEACTL-1250-600-C3	0.3	600 A	

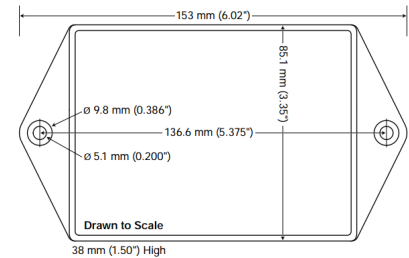
* One current transformer per phase; Sold in kits of 3 CTs. For other ratings contact SolarEdge



Current Transformer Dimensions



Meter Dimensions



	SE-RWND-3D-208-MB	SE-RWND-3D-480-MB	UNITS
ELECTRICAL SERVICE			
Operating Voltage Range - Line to Line	208-240	480	Vac
AC Frequency	60		Hz
Grids Supported: Three Phase*	4-wire WYE (L1-L2-L3-N) or 3 wire Delta	4-wire WYE (L1-L2-L3-N)	
Power Consumption (typ.)	1.8		W
COMMUNICATION			
Supported Communication Interfaces	RS485		
Default Device ID (Modbus)	1		
RS485 Line Termination	120		Ω
ACCURACY (@25°C, PF: 1)**			
1% - 100% of Rated CT Current	±0.5		%
STANDARD COMPLIANCE			
Safety	IEC 61010-1, CAN/CSA-C22.2 No. 61010-1-04, IEC 61010-1:2010 (3rd Edition)		
Immunity	EN 61326 -1:2013, EN 61000-4-2, EN 61000-4-3, EN 61000-4-4, EN 61000-4-5, EN 61000-4-6, EN 61000-4-11		
Emissions	FCC Part 15: Class B, CISPR11: 2009: Class B		
Revenue metering	ANSI C12.20-2010 class 0.5**		
INSTALLATION SPECIFICATIONS			
Dimensions (HxWxD)	6.02 × 3.35 × 1.50		in.
Weight	11		Lb.
Enclosure type	High impact, ABS and/or ABS/PC plastic UL 94V-0, IEC FV-0		
Operating Temperature Range	-40 to 167		°F
Relative Humidity (noncondensing)	5 - 90		%
Protection Rating	Indoor (Outdoor when installed in an outdoor enclosure)		
Mounting Type	DIN Rail / Wall mount		

* PE (Protective Earth) connection is not required for meter operation

** Using Opt C0.3 CT models available from CCS

RoHS **CE**

© SolarEdge Technologies, Inc. All rights reserved. SOLAREEDGE, the SolarEdge logo, OPTIMIZED BY SOLAREEDGE are trademarks or registered trademarks of SolarEdge Technologies, Inc. All other trademarks mentioned herein are trademarks of their respective owners. Date: 07/2017. V.01. Subject to change without notice.

