

Installation Instructions

S-5!® Warning! Please use these products responsibly! Visit our website or contact your S-5! distributor for available load test results. The user and/or installer of these parts is responsible for all necessary engineering and design to ensure the CorruBracket™ 100T has been properly spaced and configured.

Notice to S-5! users: Due to the many variables involved with specific panel products, climates, snow melt phenomena, and job particulars, the manufacturer cannot and does not express any opinions as to the suitability of any S-5! assembly for any specific application and assumes no liability with respect thereto. S-5! products are tested for ultimate holding strength on various profile types and materials. This information is available from the S-5! website: www.S-5.com. This document is an installation guide only and the photographs and drawings herein are for the purpose of illustrating installation tools and techniques, not system designs.

CorruBracket 100T is mounted directly into the crest of the corrugation with proper sheet metal screws or bulb rivets, or can be mounted directly over and into the supporting structure of the roof, i.e. wood decking, wood or steel purlins, or trusses.

Tools Needed

- Screw or Pop Rivet Gun
- String Line
- Rag
- Tape Measure

Use Proper Hardware

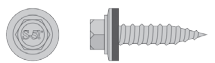
Only use appropriate screws and hardware when attaching this product to the roof sheeting or directly into the supporting structure.

Sheeting Only



Not Provided

Rivet Specifications: 9/32" (7.7mm) Diameter - Alu/Alu Flat Head Bulb-Tite Rivet with 5/8" (16mm) EPDM Washer
Grip: 0.032" - 0.375" / 0.8mm - 9.5mm



Sold Separately

Screw Specifications: 1/4" (6.3mm) Diameter - 1" (25mm) Length - Stainless Steel Self Tapping Screw with Hardened Steel Piercing Point - 5/16" (8mm) Hex Head - 5/8" (16mm) Stainless Steel / EPDM Sealing Washer

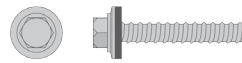
Check with your distributor for pricing and availability

Supporting Structure



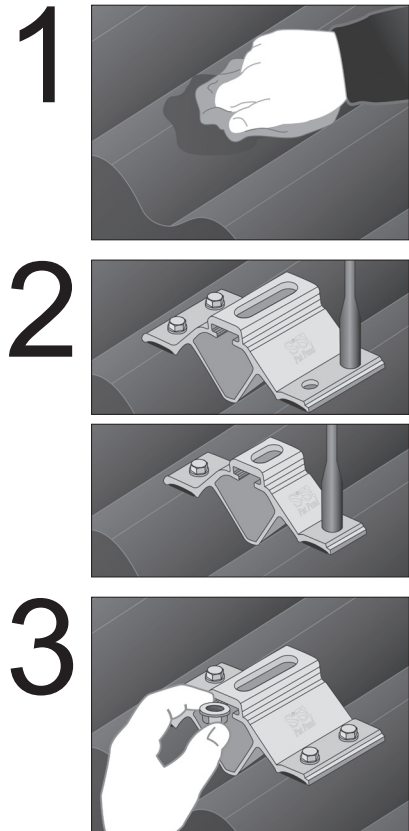
Not Provided

Metal to Metal Screw Specifications: 1/4-14 Self Drilling Screw - 2" Length - 3/8" Hex Washer Head - Zinc/Aluminum Cap



Not Provided

Metal to Wood Screw Specifications: 1/4-14 Type 17-AB Milled Point - 2-1/2" Length - 3/8" Hex Washer Head - Zinc/Aluminum Cap



Step 2-b shows the CorruBracket™ 100T Mini

To Install CorruBracket™ 100T or CorruBracket™ 100T Mini

A) Attaching to roof sheeting

1. The only surface preparation necessary is to simply wipe away excess oil and debris.
2. Secure the CorruBracket 100T or CorruBracket™ 100T Mini directly into the crown of the roof profile with the recommended screws via the pre-punched holes, or by pre-drilling the proper-sized hole in the sheeting through the pre-punched holes and riveting with bulb-type rivets (as per rivet manufacturers installation instructions). To achieve tested holding strength, secure the CorruBracket 100T or CorruBracket 100T Mini by using all of the pre-punched hole locations. Drive the fastener in until it is tight and the washer is firmly seated.

Note: Do not over-drive fasteners; a slight extrusion of rubber around the washer is a good visual-tightness check. If a fastener has been over-driven, it is important to remove the fastener and replace it with a bulb rivet. To avoid stripping, use screw gun with depth-sensing nose piece or adjustable torque clutch.

3. From either end of the CorruBracket 100T or CorruBracket 100T Mini, slide an M8-1.25 hex flange nut (flange side up) into the top groove. The CorruBracket 100T and CorruBracket 100T Mini are now ready to install other ancillaries, such as the S-5-PV Kit, using a standard M8 bolt through the slotted top thru-hole and the previously inserted hex flange nut.

These instructions are for use by those experienced in the trade. Always follow appropriate safety precautions and use appropriate tools.

To Install CorruBracket™ 100T or CorruBracket™ 100T Mini

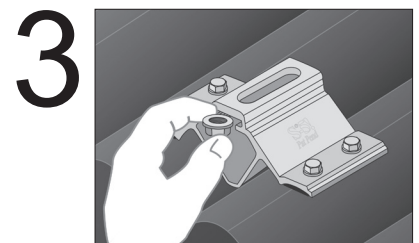
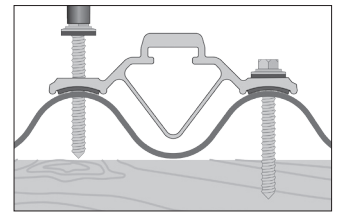
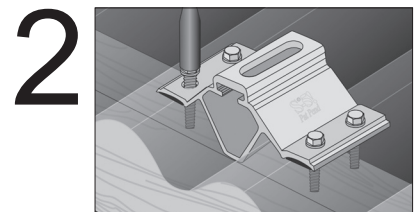
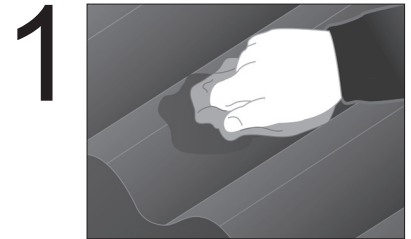
B) Attaching to supporting structure

1. Determine the location of the supporting structure of the roof. When possible secure the CorruBracket™ 100T using all of the pre-punched hole locations; when not possible, always use the two upslope hole locations. Always secure CorruBracket™ 100T Mini using both hole locations. The only surface preparation necessary is to simply wipe away excess oil and debris.

2. Secure the CorruBracket 100T or CorruBracket 100T Mini by drilling appropriate screws into the pre-punched holes and directly into the supporting structure of the roof. Do not remove the EPDM rubber gasket as this is for weather-proofing.

Note: To ensure brackets are installed in a straight line, install a single CorruBracket 100T or CorruBracket 100T Mini on each end of the roof at a measured consistent distance from the bottom edge of the roof. Stretch a string line between the two brackets. Mount the remaining brackets along the string line, into the roof sheeting or substrate.

3. From either end of the CorruBracket 100T or CorruBracket 100T Mini, slide an M8-1.25 hex flange nut (flange side up) into the top groove. The CorruBracket 100T and CorruBracket 100T Mini are now ready to install other ancillaries, such as the S-5-PV Kit, using a standard M8 bolt through the slotted top thru-hole and the previously inserted hex flange nut.



S-5!® Warning! Please use this product responsibly!

Products are protected by multiple U.S. and foreign patents. For published data regarding holding strength, fastener torque, patents, and trademarks, visit the S-5! website at www.S-5.com.
Copyright 2015, Metal Roof Innovations, Ltd. S-5! products are patent protected.
S-5! aggressively protects its patents, trademarks, and copyrights. Version 011515.