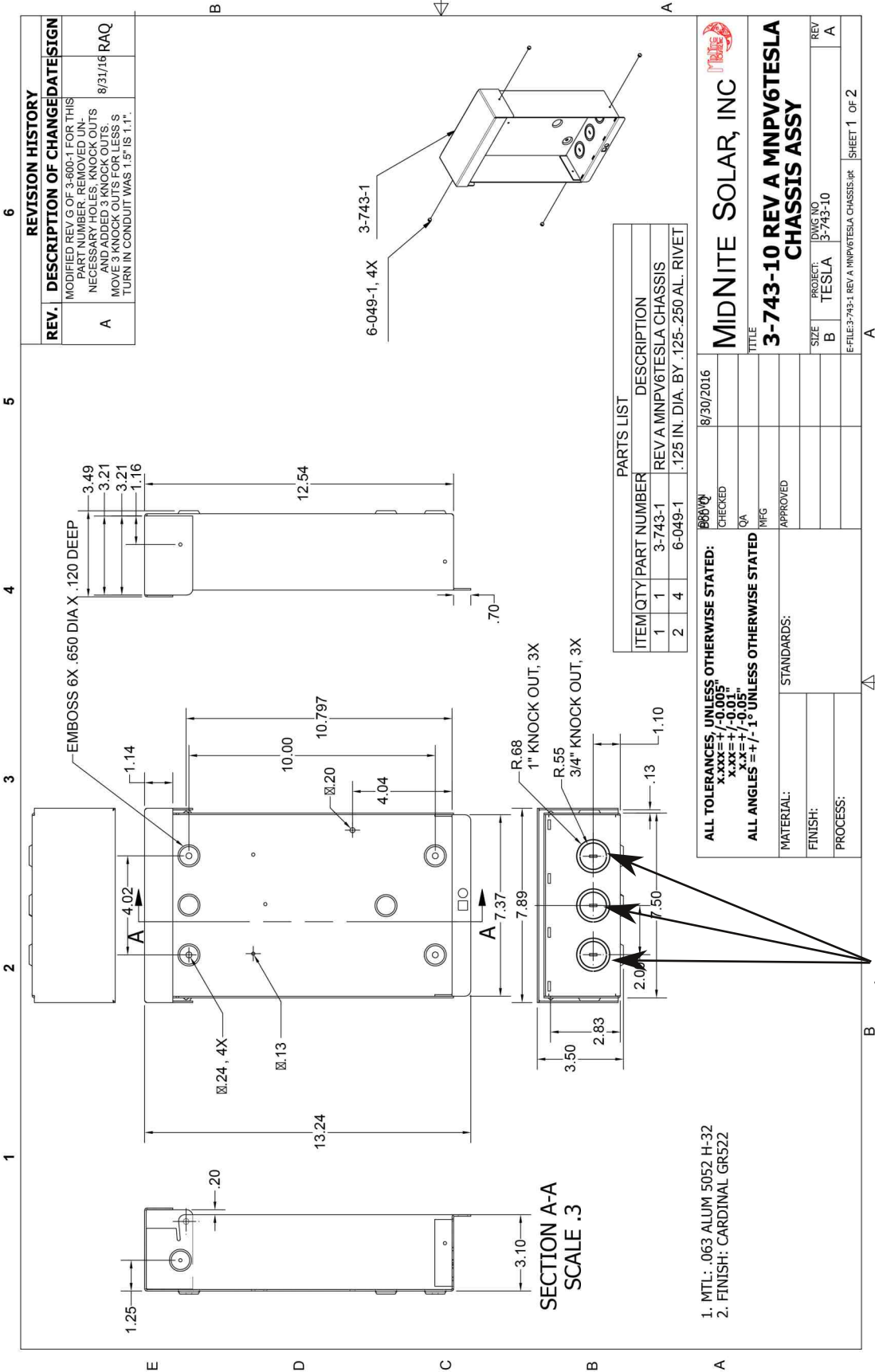




MNTPW Combiner Instructions



REV.	DESCRIPTION OF CHANGES	DATE	DESIGN
A	MODIFIED REV G OF 3-600-1 FOR THIS PART NUMBER. REMOVED UNNECESSARY HOLES, KNOCK OUTS AND DIMENSIONS. MOVE 3 KNOCK OUTS FOR LESS TURN IN CONDUIT WAS 1.5" IS 1.1".	8/31/16	RAQ

ITEM	QTY	PART NUMBER	DESCRIPTION
1	1	3-743-1	REV A MNPV6TESLA CHASSIS
2	4	6-049-1	.125 IN. DIA. BY .125-.250 AL. RIVET

MIDNITE SOLAR, INC.

3-743-10 REV A MNPV6TESLA CHASSIS ASSY

DATE: 8/30/2016

CHECKED: [Signature] / QA

APPROVED: [Signature] / RFG

STANDARDS:

MATERIAL:

FINISH:

PROCESS:

ALL TOLERANCES, UNLESS OTHERWISE STATED:
 X.XXX = ±0.005"
 X.XX = ±0.01"
 X.X = ±0.05"
 ALL ANGLES = ±1° UNLESS OTHERWISE STATED

SIZE: B
 PROJECT: TESLA
 DWG NO: 3-743-10
 REV: A

E-FILE: 3-743-1 REV A MNPV6TESLA CHASSIS.DWG SHEET 1 OF 2

1. MTL: .063 ALUM 5052 H-32
2. FINISH: CARDINAL GR522