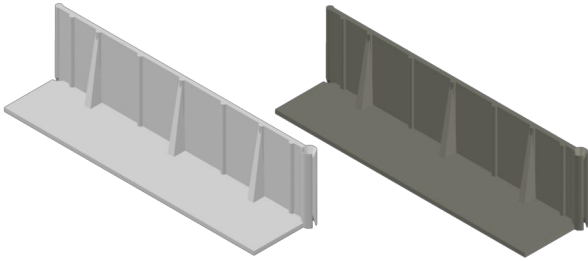


E-CURB System

The *E-CURB* penetration pieces consist of the following sizes and colors:



E-CURB Straights

8" straight sections used to lengthen the *E-CURB*.

F1356WH (White)

-Contains 16 straights per carton only.

F1356GR (Gray)

-Contains 16 straights per carton only.

E-CURB Corners

2" corner pieces used with straight sections to make box shapes.

F1355WH (White)

-Contains 16 Corners per carton only.

F1355GR (Gray)

-Contains 16 Corners per carton only.



E-CURB Diameter Rounds

3" diameter round consisting of (2) 1.5" radius pcs.

F1331 (Gray only complete 1-Part™ & M-1® kit)

-Contains 10 complete curbs per carton only.

F1333 (Gray components only)

-Contains 24 curbs only per carton.

4" diameter round consisting of (2) 2" radius pcs.

F1354WH or F1354GR (complete 1-Part™ & M-1® kit)

-Contains 4 complete curbs per carton only.

F1357WH or F1357GR (components only)

-Contains 12 curbs only per carton.

6" diameter round consisting of (2) 3" radius pcs.

F1350WH or F1350GR (complete 1-Part™ & M-1® kit)

-Contains 3 complete curbs per carton only.

F1352WH or F1352GR (components only)

-Contains 6 curbs only per carton.

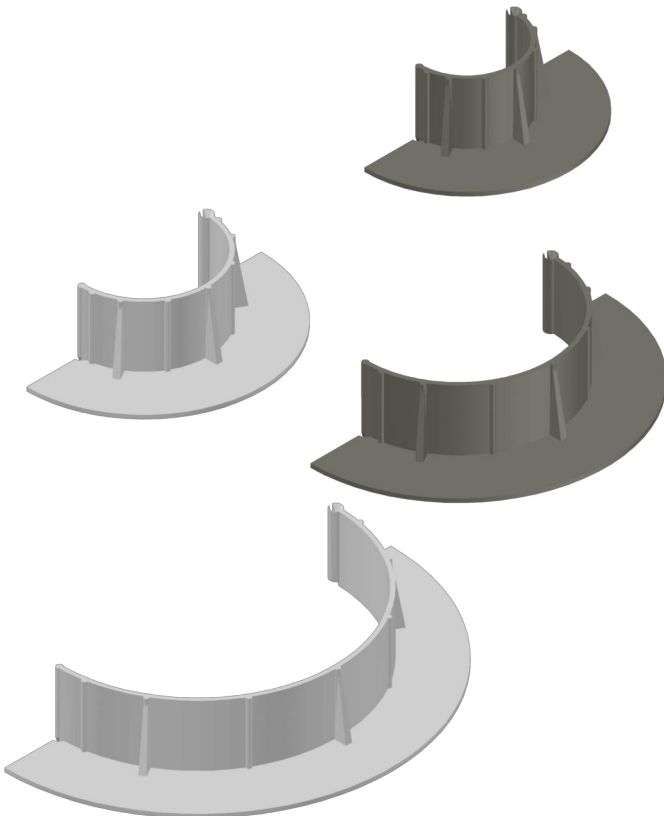
9" diameter round consisting of (2) 4.5" radius pcs.

F1351WH or F1351GR (complete 1-Part™ & M-1® kit)

-Contains 3 complete curbs per carton only.

F1353WH or F1353GR (components only)

-Contains 5 curbs only per carton.



CONTACT INFORMATION:

Customer Service: 800.826.1681

www.ChemLink.com

Date: May 12, 2013

Title: E-CURBs

Sheet: 1 of 16

DRW #: CL-EC-01

Drawn by: Christian Appold