

D Dome Railless² System

WEEB Clip BMC



Part Number	
4000469	Material: Stainless Steel

This is an add on piece that attaches to an aluminum clamp to bond.

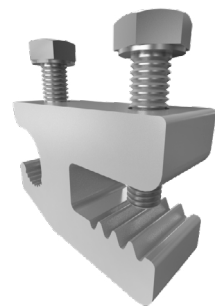
Dome Mid Clamp Set



Part Number		Box Qty	Pallet Qty
4000603-4000606	Material: Stainless Steel Finish: Silver Hardware: Stainless Steel	20	5,880

We have several different end clamps in order to fit different module frames. They range from 30-50 mm.

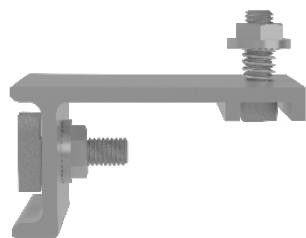
IlSCO Lug



Part Number	
4000960	Material: Tin Plated Aluminum Finish: Mill Hardware: Stainless Steel

Third-party Ground Lug made by ILSCO compatible with MiniRail XPress and Dome Railless² Systems.

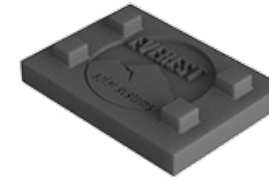
Dome Micro-Inverter and Optimizer Kit



Part Number		Box Qty
4000646	Material: Stainless Steel	20

This kit makes it possible to attach a microinverter or optimizer to the Dome Peak.

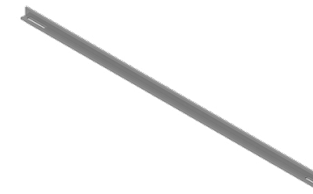
Roof Spacer Mat R²



Part Number	
4000636	Material: Recycled Rubber

This piece is like a shim, it fits on the roof protection mat and allows the height of the peak or base to be adjusted to accommodate for undulations in the roof.

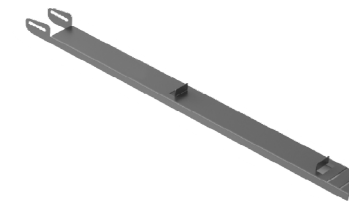
Dome Porter R²



Part Number		Box Qty	Pallet Qty
4000603-4000606	Material: Aluminum	20	5,880

The Porters are placed parallel to each other to create a section for the ballast blocks to weigh down the system.

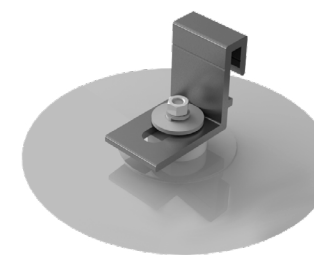
Dome Corner Strut R²



Part Number		Box Qty	Pallet Qty
4000637	Material: Aluminum	100	3,000

This piece adds rigidity to the corners of Dome R² arrays. It has a secondary function where it can be used to add more ballast blocks when necessary.

OMG PowerGrip Plus with Porter Bracket



Part Number	
4000335	Material: Aluminum Hardware: Stainless Steel

This is an optional third-party product that is used to secure the system to the roof if ballasting is not enough for your area.