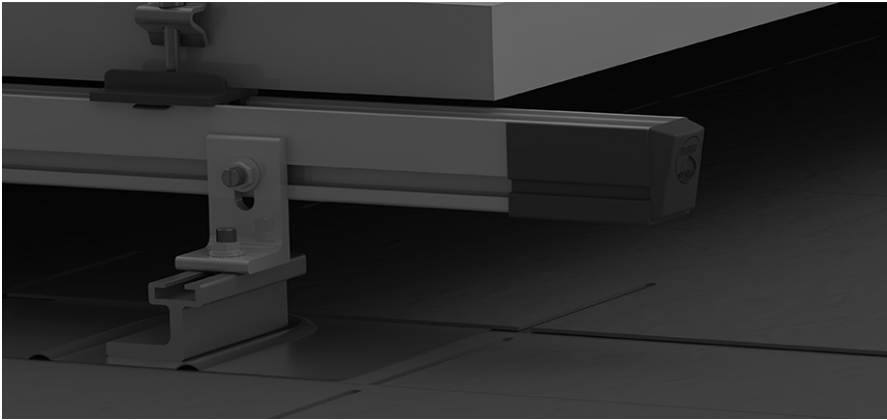


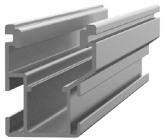
# Mounting systems for solar technology



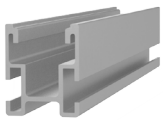
## CrossRail 48-S/48 Sleeve:

- Get an aesthetically pleasing dark finish by hiding the ends of the mill rail at a low cost!
- Fast, simple installation
  - Quickly snaps onto CrossRail 48-S
  - Slides onto CrossRail 48
- Universal Rail Sleeve, one part fits both sides of CrossRail 48-S and CrossRail 48

## EVEREST SOLAR SYSTEMS CROSSRAIL SLEEVE

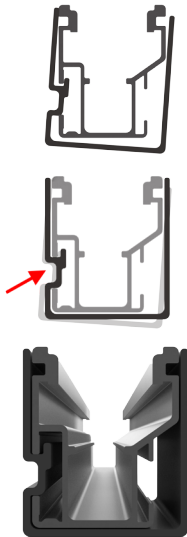


**CrossRail 48-S/48**  
Material: Aluminum



**CrossRail Sleeve 3" Black**  
Material: UV Resistant Black PVC

## INSTALLATION OF CROSSRAIL SLEEVE: STEP BY STEP



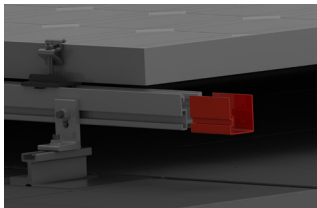
1  
of 2

### FOR CROSSRAIL 48-S: SNAP INTO PLACE

To install the CrossRail Sleeve on CrossRail 48-S, first place the CrossRail Sleeve over the rail with the T-Bolt Key on the T-Bolt Channel.

Once the CrossRail Sleeve is in the correct position, place your hand over the top of the rail with fingers in the groove of the CrossRail Sleeve.

Slowly push in on the groove while pulling up. You should hear a snap indicating the CrossRail Sleeve has been attached fully.



2  
of 2

### FOR CROSSRAIL 48: SLIDE INTO PLACE

To install the CrossRail Sleeve on CrossRail 48, first align the CrossRail Sleeve to the end of the rail.

The CrossRail Sleeve must slide over the end of the rail. Ensure the T-Bolt Key is fully seated within the T-Bolt Channel.

Ready!

**THANK YOU FOR CHOOSING AN EVEREST SOLAR SYSTEMS MOUNTING SYSTEM.**

The CrossRail Shared Rail System is simple and fast to install. Please contact us for further assistance:

**SERVICE-HOTLINE +1.760.301.5300**

Everest Solar Systems, LLC  
3809 Ocean Ranch Blvd.  
Suite 111  
Oceanside, CA 92056  
Tel. +1.760.301.5300  
info@everest-solarsystems.com  
www.everest-solarsystems.com

#### CrossRail Sleeve Quick Guide US2-1216

Product images are for illustrative purposes only. Specifications are subject to change without notice. All sales of our products shall be subject to Everest Solar Systems terms and conditions, including the exclusive limited warranty set forth therein.