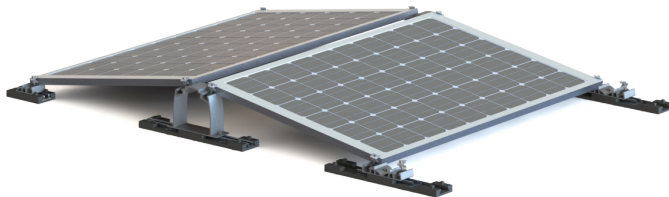


Mounting systems for solar technology



Everest Solar Systems

Mounting Systems Solutions



NEW

- Shared Rail for Pitched Roofs [Page 3]
- New innovative double-sided low ballast system: D Dome Railless [shown here and on Page 8]

TABLE OF CONTENTS

CrossRail for Pitched Roofs	2
Shared Rail for Pitched Roofs	3
CrossRail Tilt Up Systems	4
CrossRail for Ground Mount	5
XPressRail for Trapezoidal Metal Roofs	6
D Dome for Flat Roofs	7
D Dome Railless for Flat Roofs	8
S Dome for Flat Roofs	9



Mounting systems for solar technology

Everest Solar Systems

Everest Solar Systems is dedicated to advancing solar energy installations throughout the Americas by offering cutting edge mounting systems for solar technology. The company is a member of K2 Systems International Group, which continues to improve its broad portfolio of industry-leading technologies and mounting solutions for residential, commercial, and utility scale solar deployments.

The mission of Everest Solar Systems, following K2's success in Europe, is to offer innovative mounting solutions to our customers backed by world class quality, engineering and customer support. Based in Oceanside, California, the company will support the America's long term market development with a broad set of capabilities including local product development, sales, applications, project services, manufacturing and sourcing operations.

NOW SHIPPING!

D DOME RAILLESS

East/West System



Simple • Versatile • Fast • Durable

INNOVATION – QUALITY – DURABILITY – SERVICE – SUPPORT



Pre-Built Assemblies Delivered to Your Site:



UL 2703 Bonding Mid Clamp



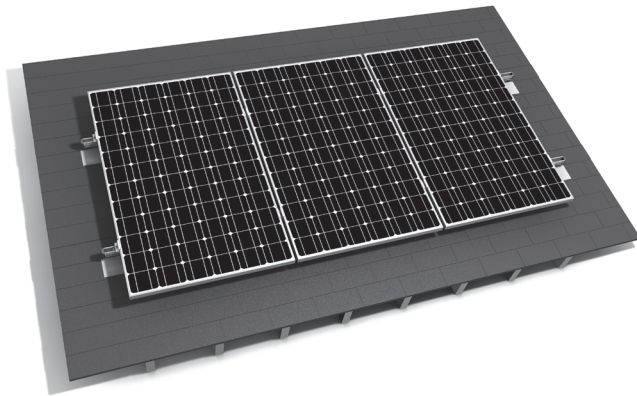
UL 2703 Bonding End Clamp



Flat Roof Ballasted or Attached
→ High GCR / Energy Density
→ Wind Tunnel Tested with SEAOC peer-reviewed results

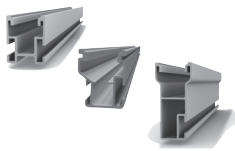


Mounting systems for solar technology



CrossRail for Pitched Roofs:

- High quality, German engineering
- UL 2703 Listed for bonding and fire
- Fast, simple installation
 - No drilling, no bonding jumpers
 - Pre-assembled clamps with integrated bonding
 - Robust bonding rail splices
 - Low part count
- Also compatible with tile roofs using commonly-available roof hooks



CrossRail 48/48-S/80

Material: aluminum
 Finish: mill, dark anodized
 Standard length: 164"/166"/164", custom



Burndy WEEB Lug 8.0 + Hardware

Weeb Lug 8.0 Material: tin plated copper
 Hardware: stainless steel



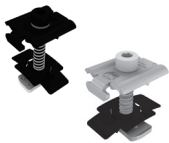
Rail Connector Set¹

Material: aluminum
 Finish: mill, dark anodized
 Hardware: stainless steel



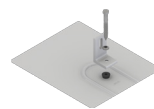
L-Foot w / Hardware²

Material: aluminum
 Finish: mill, dark anodized
 Hardware: stainless steel



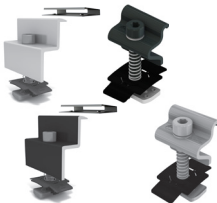
Bonding Mid Clamp Set¹

Material: stainless steel
 Finish: silver, dark



EverFlash

Material: aluminum
 Finish: mill, dark



Bonding End Clamp Sets¹

Material: stainless steel or aluminum
 Finish: silver, dark



TileHook 3S

Material: aluminum
 Finish: mill



End Cap for CrossRail

Material: high strength nylon (PA66)



Optional: Micro Inverter and Optimizer Mounting Kit^{1,3}

Material: stainless steel

¹ Dark anodized rail must use Bonding T-Bolt and Bonding MK3 hardware.

² Use standard L-Foot with 3rd party roof attachments and EverFlash L-Foot with EverFlash Comp Flashing.

³ The inverter hardware kit is not intended to replace the micro inverter ground and has only been evaluated to attach to the rail.

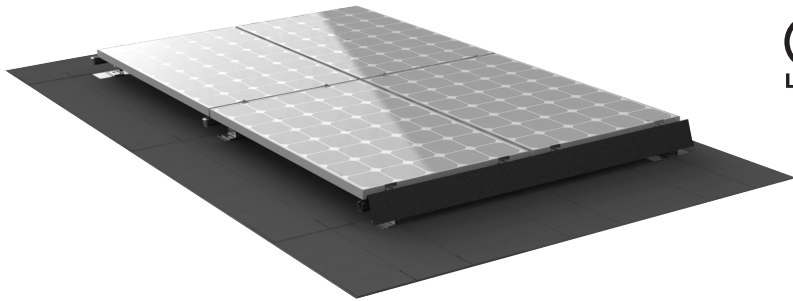
CROSSRAIL FOR PITCHED ROOFS

For more information contact: sales@everest-solarsystems.com | Phone: 760-301-5300



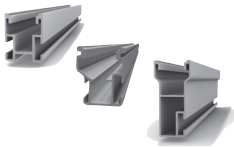


Mounting systems for solar technology



Shared Rail for Pitched Roofs:

- UL 2703 Listed for bonding and fire
- Fast, simple installation
 - No drilling, no bonding jumpers
 - Pre-assembled clamps with integrated bonding
 - Robust bonding rail splices
 - Low part count
- Also compatible with tile roofs using commonly-available roof hooks



CrossRail 48/48-S/80

Material: aluminum
 Finish: mill, dark anodized
 Standard length: 164"/166"/164", custom



Burdny WEEB Lug 8.0 + Hardware

Webb Lug 8.0 Material: tin plated copper
 Hardware: stainless steel



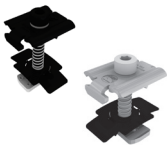
Rail Connector Set

Material: aluminum
 Finish: mill, dark anodized
 Hardware: stainless steel



L-Foot w / Hardware

Material: aluminum
 Finish: mill, dark anodized
 Hardware: stainless steel



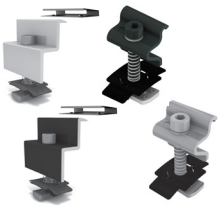
Bonding Mid Clamp Set

Material: stainless steel
 Finish: silver, dark



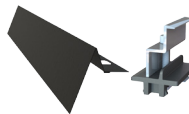
Optional: Micro Inverter and Optimizer Mounting Kit

Material: stainless steel



Bonding End Clamp Sets

Material: stainless steel or aluminum
 Finish: silver, dark



Optional: Array Skirt w/ Hardware

Material: aluminum
 Finish: dark anodized
 Hardware: stainless steel



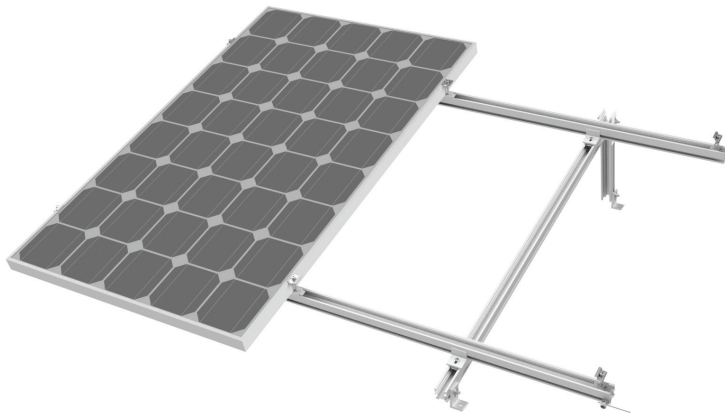
Shared Rail Add-On

Material: glass fibre reinforced polyimide
 Finish: black



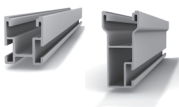


Mounting systems for solar technology



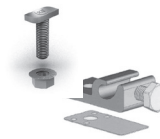
CrossRail Tilt Kit for Steep Slope and Low Slope Roofs:

- High quality, German engineering
- UL 2703 Listed for bonding
- Fast, simple installation
 - No drilling, no bonding jumpers
 - Pre-assembled clamps with integrated bonding
 - Pre-engineered for 7, 10, and 15 degree tilt angles



CrossRail 48 & CrossRail 80

Material: aluminum
 Finish: mill, dark anodized
 Standard length: 164", custom



Burdny WEEB Lug 8.0 + Hardware

Webb Lug 8.0 Material: tin plated copper
 Hardware: stainless steel



Rail Connector Set CrossRail 48 & 80¹

Material: aluminum
 Finish: mill, dark anodized
 Hardware: stainless steel



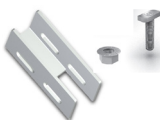
L-Foot w / Hardware⁴

Material: aluminum
 Finish: mill, dark anodized
 Hardware: stainless steel



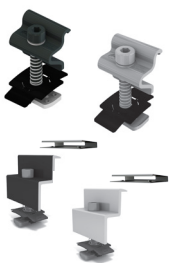
Bonding Mid Clamp Set¹

Material: stainless steel
 Finish: silver, dark



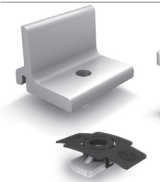
CrossRail Tilt Up Bracket Kit¹

Material: aluminum
 Finish: mill, dark anodized
 Hardware: stainless steel



Bonding End Clamp Sets¹

Material: stainless steel or aluminum
 Finish: silver, dark



Climber Set^{1,2}

Material: aluminum
 Finish: mill
 Hardware: stainless steel



Optional: Micro Inverter and Optimizer Mounting Kit^{1,3}

Material: stainless steel

¹ Dark anodized rail must use Bonding T-Bolt and Bonding MK3 hardware.

² Slotted version may only be used on arrays with a tilt angle less than 45 degrees, relative to ground.

³ The inverter hardware kit is not intended to replace the micro inverter ground and has only been evaluated to attach to the rail.

⁴ Use standard L-Foot with 3rd party roof attachments and EverFlash L-Foot with EverFlash Comp Flashing.

CROSSRAIL FOR TILT UP SYSTEMS





Mounting systems for solar technology



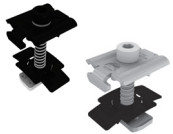
CrossRail for Ground Mount:

- Pre-engineered System:
 - 4 rows in landscape
 - 20-35° tilt
 - 0-50 lbs Snow, 100 -130 mph Wind
- Uses the Everest CrossRail 80 & L-Bracket kit on standard 1.5 - 2.0" pipe & Hollaender connectors
- Low cost system with easy installation



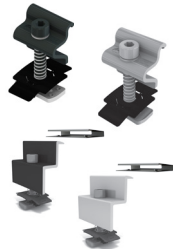
CrossRail 80

Material: aluminum
Standard length: 164" or custom



Bonding Mid Clamp Set

Material: stainless steel
Finish: silver, dark



Bonding End Clamp Sets

Material: stainless steel or aluminum
Finish: silver, dark



Everest Universal L-Bracket Kit w/Hardware

Material: galvanized steel
T-bolt material: stainless steel



Burndy WEEB Lug 8.0 + Hardware

Material: aluminum
Hardware: stainless steel



End Cap for CrossRail 80

Material: high strength nylon (PA66)



Schedule 40/80 Galv. Pipe

Material: galvanized steel



Hollaender No. 70 External Coupling

Material: aluminum



Hollaender 5 EXT Extended Barrel Tee

OR



Hollaender 5 EX

Material: aluminum



Hollaender 17E Adj. Elbow OR

Tee-E Assembly +

Hollaender 17 Adj. Elbow or Tee Assembly

Material: aluminum

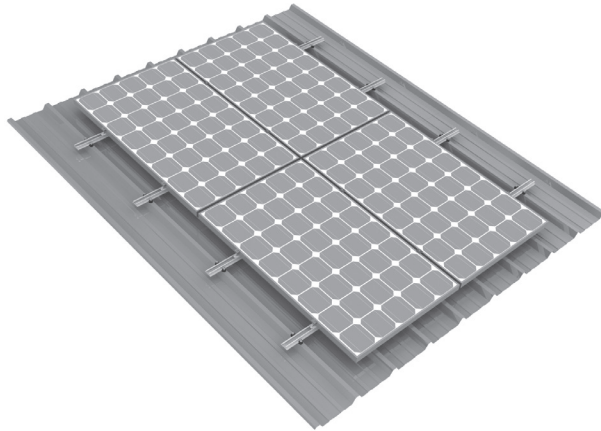


HEYClip SunRunner Cable Clip SS, S6404

Material: stainless steel

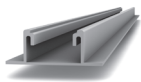


Mounting systems for solar technology



XPressRail for Trapezoidal Metal Roofs:

- High quality, German engineering
- UL 2703 Listed for bonding
- Fast, simple installation
 - No drilling, no bonding jumpers
 - Pre-assembled clamps with integrated bonding
 - Robust bonding rail splices
 - Low part count



XPressRail 22

Material: aluminum



XPressLock Set

Material: aluminium
Hardware: stainless steel



XPressClip¹

Material: glass fibre reinforced polyamid, EPDM



WEEB Lug 6.7

Material: aluminum



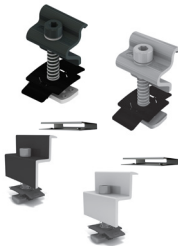
Bonding Mid Clamp Set

Material: stainless steel
Finish: silver, dark



Optional: Micro Inverter and Optimizer Mounting Kit

Material: stainless steel



Bonding End Clamp Sets

Material: stainless steel or aluminum
Finish: silver, dark



Self-Tapping Screw 6 x 36

Material: Stainless steel, jointing: EPDM, wrench size: 8 mm

Alternative: Self-tapping moulded screw 6 x 38
Material: Stainless Steel, EPDM, SW 8

¹ Minimum flat area required for mounting XPressClip: 0.9"



Mounting systems for solar technology



D Dome for Flat Roofs:

- Maximize energy / panels per roof with double sided E/W orientation - no inter row spacing required
- Wind tunnel tested resulting in low ballast & flexible load sharing (SEAC PV1 & PV2 Compliant)
- UL 2703 Listed for bonding and fire
- Roof Protection Mat and Spacer Pads to interface with common roof types and manage roof undulations
- Low material cost / easy installation



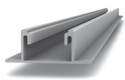
Dome D1000

Width: 3.54 inch (90 mm)
Material: aluminum



Dome SD

Width: 3.54 inch (90 mm)
Material: aluminum



XPressRail 22

Material: aluminum



Bonding Mid Clamp Set

Material: stainless steel
Hardware: stainless steel



Bonding End Clamp Sets

Material: stainless steel or aluminum
Hardware: stainless steel



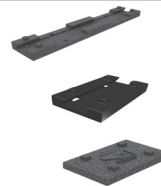
EZ Universal Hardware Set

Material: stainless steel



IlSCO Lug SGB-4

Material: tin plated aluminum
Hardware: stainless steel



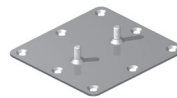
Building Protection Mat II Building Protection Mat SD Building Protection Mat Spacer Pad

Material: recycled tire rubber



Porter for Ballasting

L-Bracket for ballast
Material: aluminum



Optional: Eco Fasten Eco65

Material: stainless steel



Optional: OMG PowerGrip Plus

Allows welding to the roof membrane



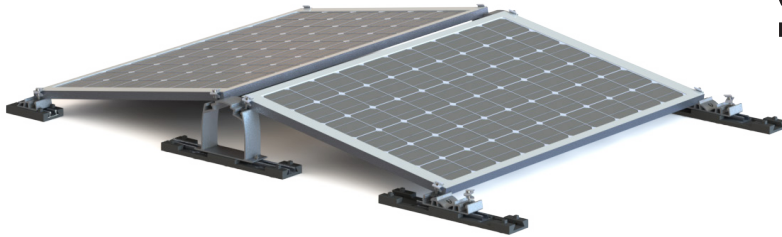
Optional: XPressRail Connector Set

Material: aluminum



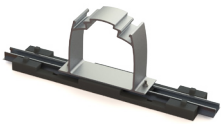


Mounting systems for solar technology



D Dome Railless for Flat Roofs:

- New innovative double-sided low ballast system suitable for all orientations
- Shares the key advantages of the D Dome System
- Pre-built assemblies delivered to the site enable simple, fast installation
- Aerodynamic optimization enables minimal ballast; wind tunnel tested by leading structural aerodynamics labs
- Low material cost / easy installation



Dome RL D1000 28" Length Kit

Material: aluminum, recycled rubber
Hardware: stainless steel



EZ Universal Hardware Set

Material: stainless steel



Dome RL Double-SD 16" Length Kit

Material: aluminum, recycled rubber
Hardware: stainless steel



IlSCO Lug SGB-4

Material: tin plated aluminum
Hardware: stainless steel



Dome RL Single-SD 10" Length Kit

Material: aluminum, recycled rubber
Hardware: stainless steel



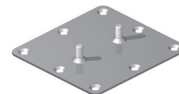
Optional: Porter for Ballasting

L-Bracket for ballast
Material: aluminum



Railless Connector Set

Material: aluminum
Hardware: stainless steel



Optional: Eco Fasten Eco65

Material: stainless steel



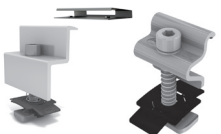
Bonding Mid Clamp Set

Material: stainless steel
Hardware: stainless steel



Optional: OMG PowerGrip Plus

Allows welding to the roof membrane



Bonding End Clamp Sets

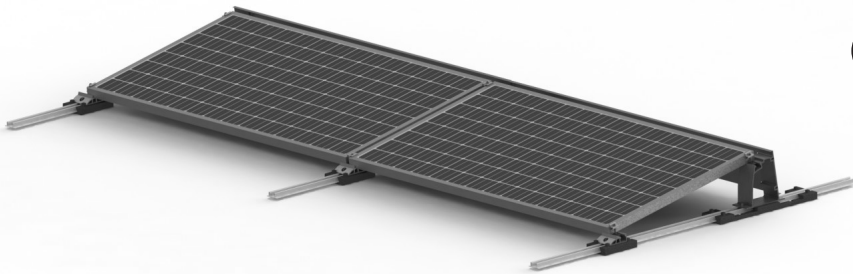
Material: stainless steel or aluminum
Hardware: stainless steel

D DOME RAILLESS FOR FLAT ROOFS





Mounting systems for solar technology



S Dome for Flat Roofs:

- 10° single sided with flexible inter-row spacing
- Wind tunnel tested resulting in low ballast & flexible load sharing (SEAC PV1 & PV2 Compliant)
- UL 2703 Listed for bonding and fire
- Roof Protection Mat and Spacer Pads to interface with common roof types and manage roof undulations
- Low material cost / easy installation



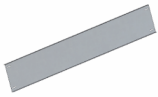
Dome S1000

Width: 3.54 inch (90 mm)
Material: aluminum



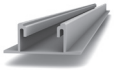
Dome SD

Width: 3.54 inch (90 mm)
Material: aluminum



Windbreaker Dome S1000

Length: 66.93 inch (1700 mm)
Material: aluminum



XPressRail 22

Material: aluminum



Bonding Mid Clamp Set

Material: stainless steel
Hardware: stainless steel



Bonding End Clamp Sets

Material: stainless steel or aluminum
Hardware: stainless steel



S Dome Windbreaker Hardware

Material: stainless steel



EZ Universal Hardware Set

Material: stainless steel



IlSCO Lug SGB-4

Material: tin plated aluminum
Hardware: stainless steel



Building Protection Mat II

Building Protection Mat SD

Building Protection Mat Spacer Pad

Material: recycled tire rubber



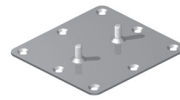
XPressRail Connector Set

Material: aluminum



Optional: Porter for ballasting

Material: aluminum



Optional: Eco Fasten Eco65

Material: stainless steel



Optional: OMG PowerGrip Plus

Allows welding to the roof membrane

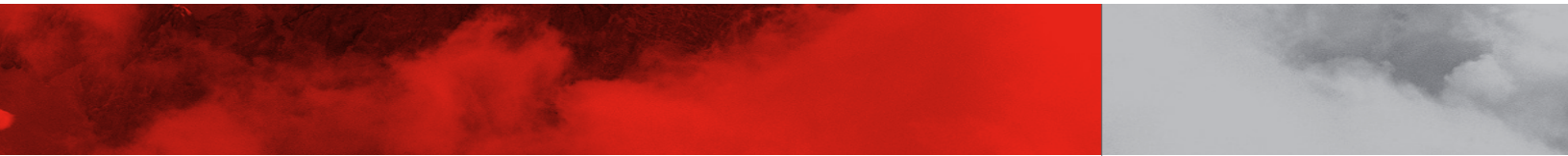


Mounting systems for solar technology

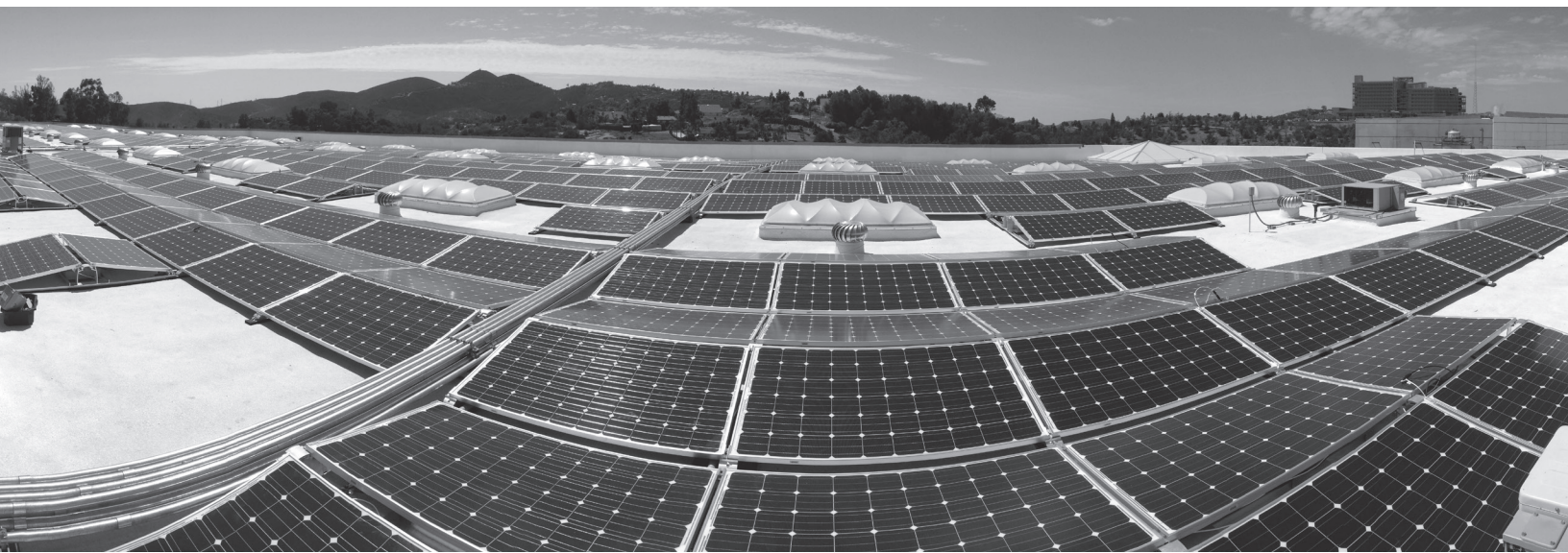


Notes:

A series of 18 horizontal dotted lines for taking notes.



Mounting systems for solar technology



INNOVATION, QUALITY AND SERVICE



Everest Solar Systems, LLC
3809 Ocean Ranch Blvd.
Suite 111
Oceanside, CA 92056
Tel. +1.760.301.5300
info@everest-solarsystems.com
www.everest-solarsystems.com