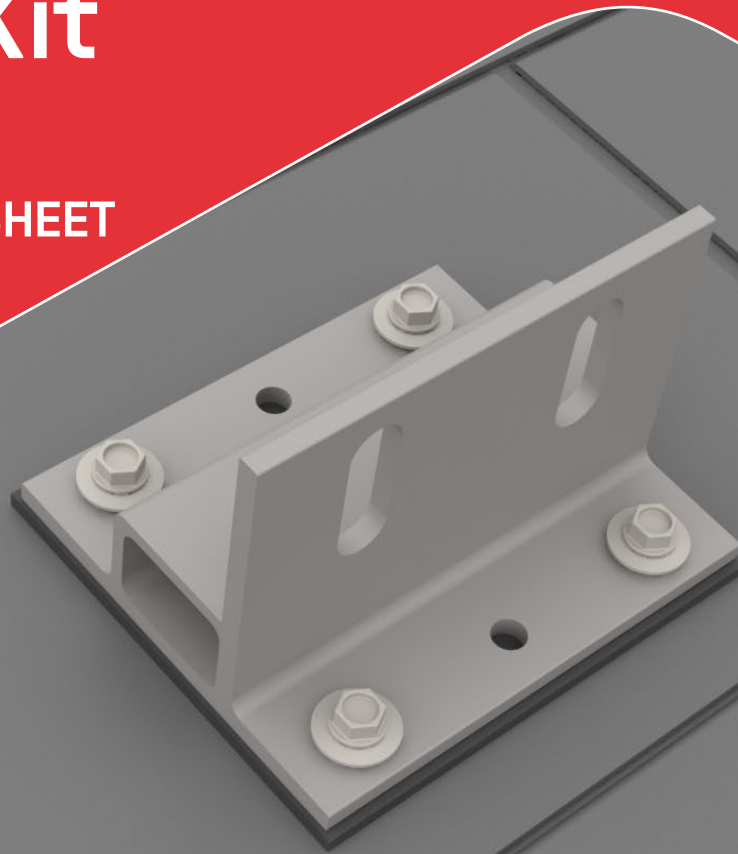


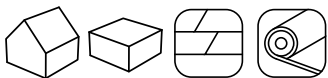
Splice Foot XL #14 Kit



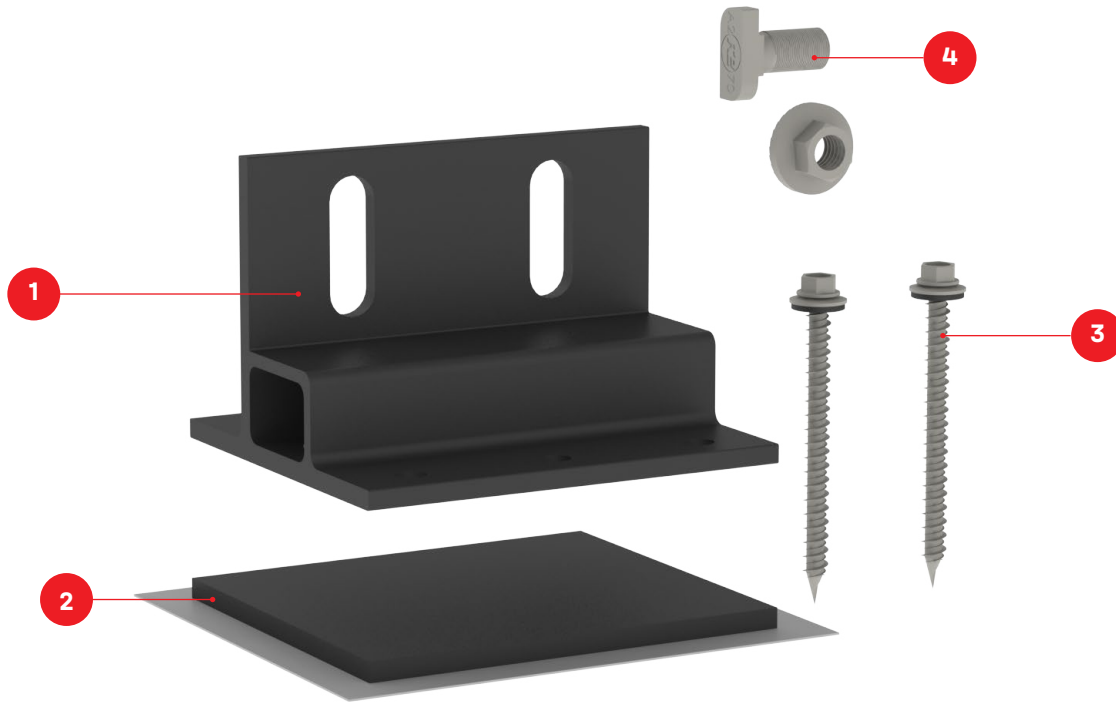
DATA SHEET



PRODUCT FEATURES



- / All-in-one mount and splice foot
- / K2 EverSeal technology
- / Available in mill and dark
- / 30+ years of proven water sealing technology on asphalt
- / Optimized for CrossRail systems and components
- / No L-Foot needed
- / T-Bolt hardware included



Splice Foot XL

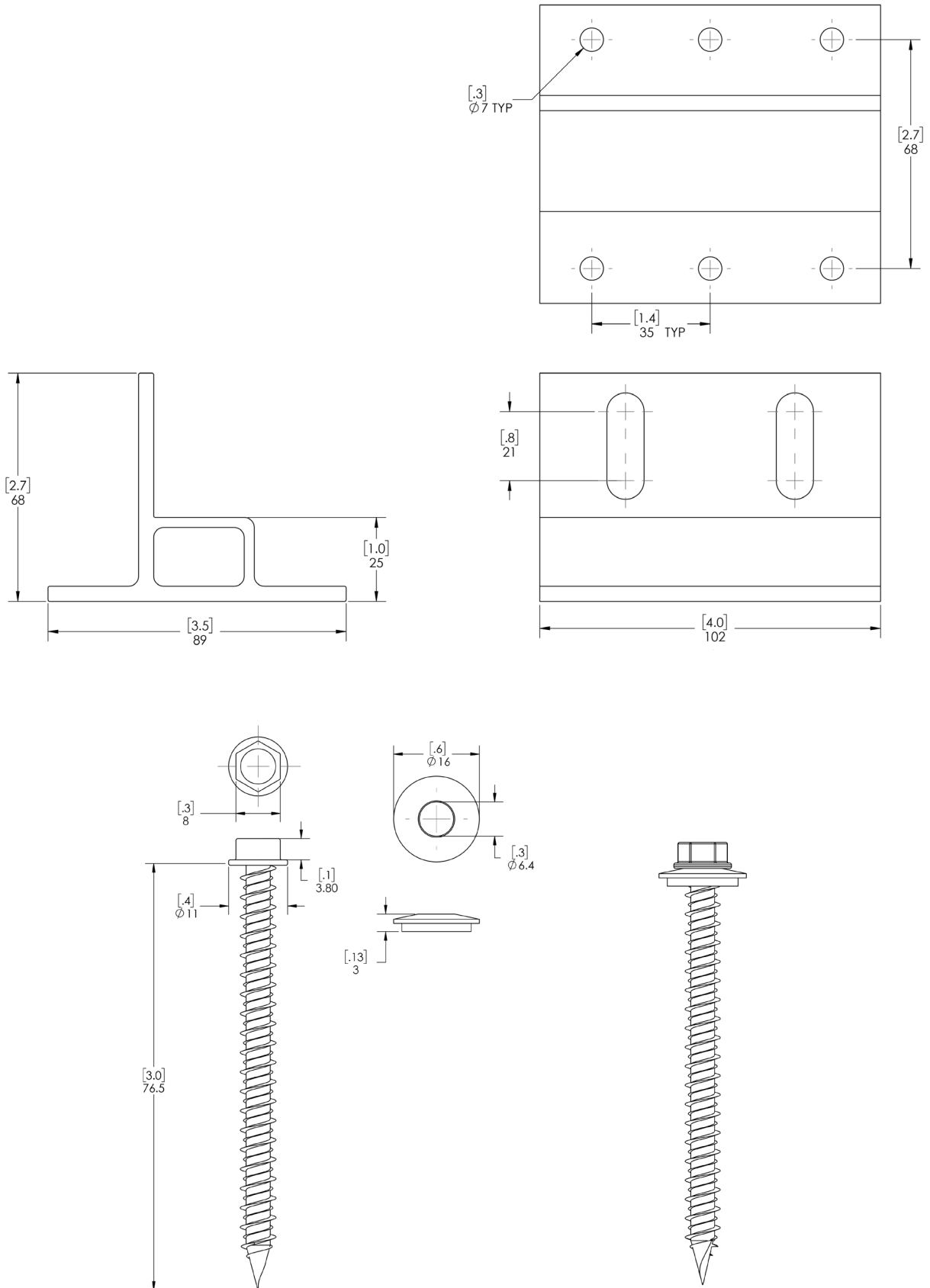
Item Number	Description	Part Number
1	Splice Foot XL	4000165 Splice Foot XL #14 Kit, Dark 4000300 Splice Foot XL #14 Kit, Mill
2	K2 EverSeal	
3	#14 × 3in x 5/16in Hex Head Screw	
4	T-Bolt & Hex Nut Set	

Splice Foot XL	
Roof Type	Composition shingle, EPDM, TPO, Bitumen, Asphalt
Material	Aluminum with stainless steel hardware
Finish	Mill
Roof Connection	#14 × 3in x 5/16in Hex Head Screw
Code Compliance	UL 2703
Compatibility	CrossRail 44-X, 48-X, 48-XL, 80

TECHNICAL DATA



Units: [in] mm

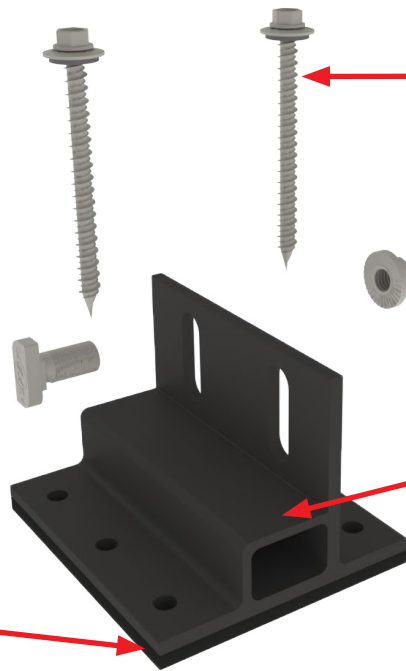


CrossRail System & Splice Foot



K2 EverSeal

- / Pre-installed butyl flexible flashing
- / 30+ years of proven water sealing technology
- / TAS 100(A) and Wind Driven Rain tested and approved

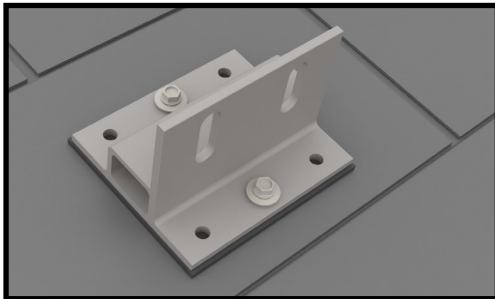


Self-Tapping Screws

- / Self-sealing; no sealant required
- / Self-tapping; no pilot holes required
- / 2 screws included per mount
- / #14 × 3in x 5/16in Hex Head Screw

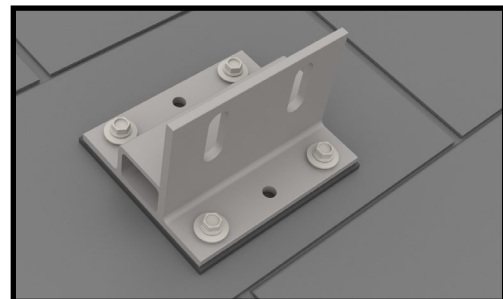
Rail Shelf

- / Allows for easier rail support
- / Aligns CrossRail T-Bolt channel



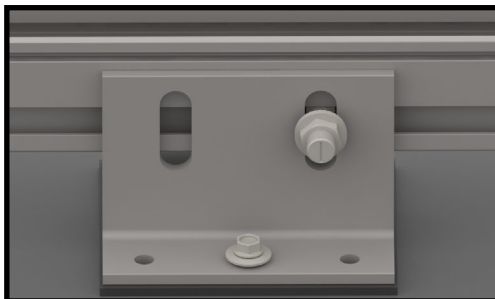
Rafter Attached

- / Best as primary attachment method
- / 2 screws required (included) in center holes
- / Self-tapping and self-sealing



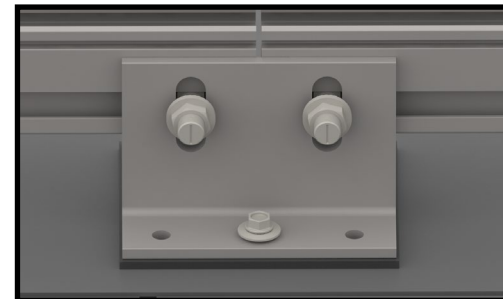
Deck Attached

- / Best as secondary attachment method
- / 4 screws required in corner holes
- / Alternative to rafter connection
- / Requires additional lag screws



As a Standard Roof Attachment

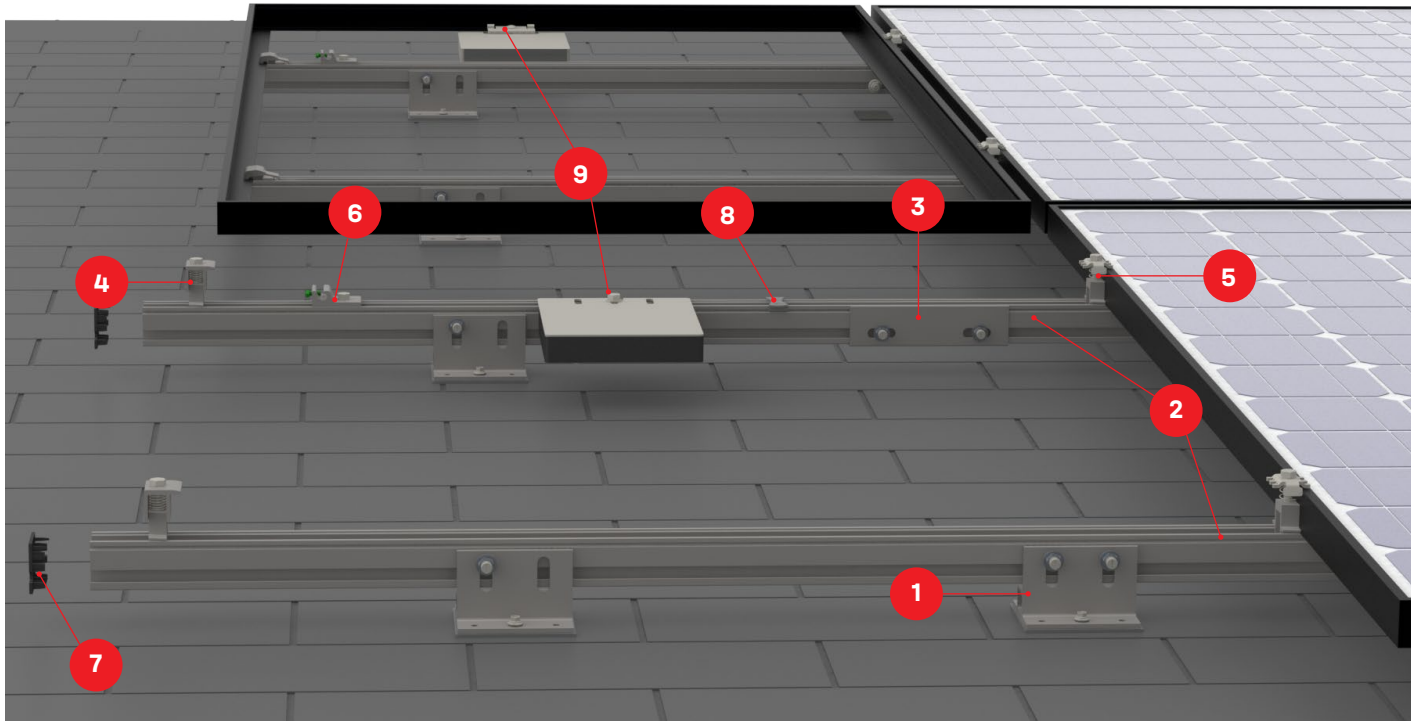
- / Only requires one T-Bolt set (included)
- / No L-Foot required
- / Torque to 25.8 ft-lbs (35 Nm)



As a Splice

- / Requires 2 T-Bolt sets
- / Additional T-Bolt set not included
- / Torque to 25.8 ft-lbs (35 Nm)

CrossRail System & Splice Foot



1 4000300
4000165



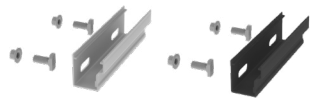
Splice Foot XL #14 Kit Mill/Dark

2 4000719, 4000720
4000721, 4000722



CrossRail 44-X, 48-X or 48-XL

3 4000051/4000052
4000385/4000386




**Structural Rail Connector
CR 44-X or CR 48-X/48-XL**

4 4000197/4000233
4000050-B



**K2 End Clamp or Yeti Clamp
30 - 50 mm module frame height**

5 4000229/4000230
4000251/4000251



**K2 Mid Clamp Set, M8×40 / 60
30 - 47 mm module frame height**

6 4000006-H




K2 Ground Lug

7 4000176
4000431




**End Cap
CR 44-X or CR 48-X/48-XL**

8 4000069
4000382
4005394



**Wire Management
TC Wire Clip, SunRunner Clip,
Omega Clip**

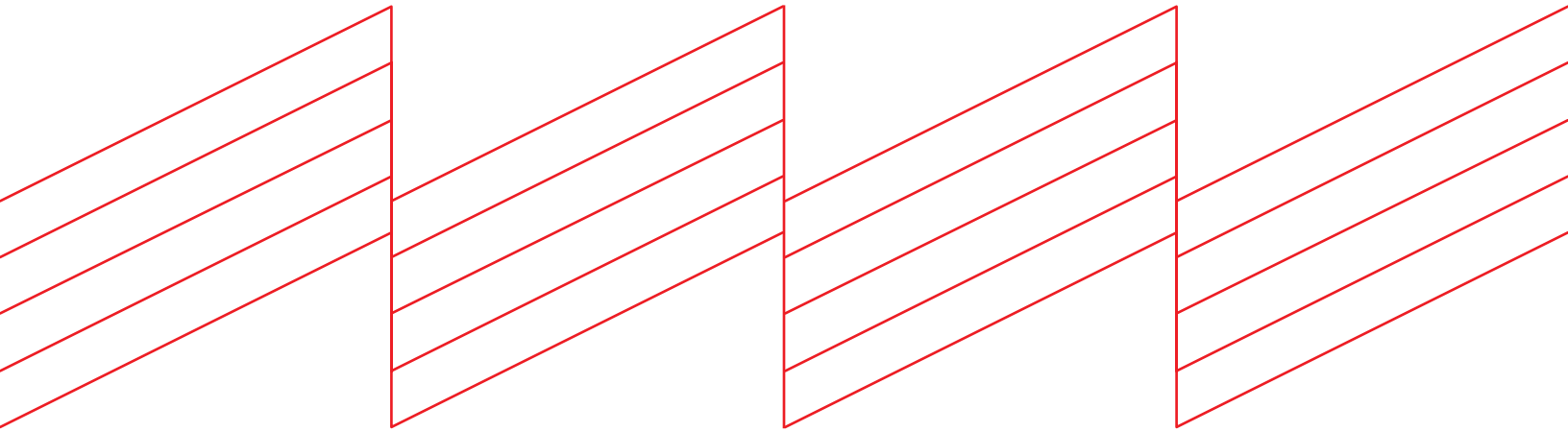
9 4000083
4000629-H



**MLPE Mounting Kits
MLPE Module Frame Mount,
CR Microinverter & Opt Mount Kit**



Connecting Strength



K2 Systems, LLC

4665 North Ave. Suite I • Oceanside, CA 92056 •
USA +1.760.301.5300 • infous@k2-systems.com
www.k2-systems.com/en-us

Splice Foot XL #14 Kit Data Sheet ENV1 | 1123 • Subject to change
Product illustrations are exemplary and may differ from the original.

Everest Solar Systems S de RL de CV

Calle Coral 2628 Int. 1 • Col. Residencial
Victoria, CP 44560 • Guadalajara, Jal. • México
+52.33.3575.9380 • info@k2-systems.mx
www.k2-systems.com/es-mx

Splice Foot XL #14 Kit Data Sheet ENV1 | 1123 • Sujeta a cambios
Las ilustraciones del producto son ejemplares y pueden diferir del original.