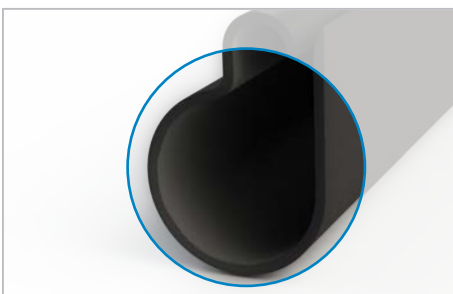
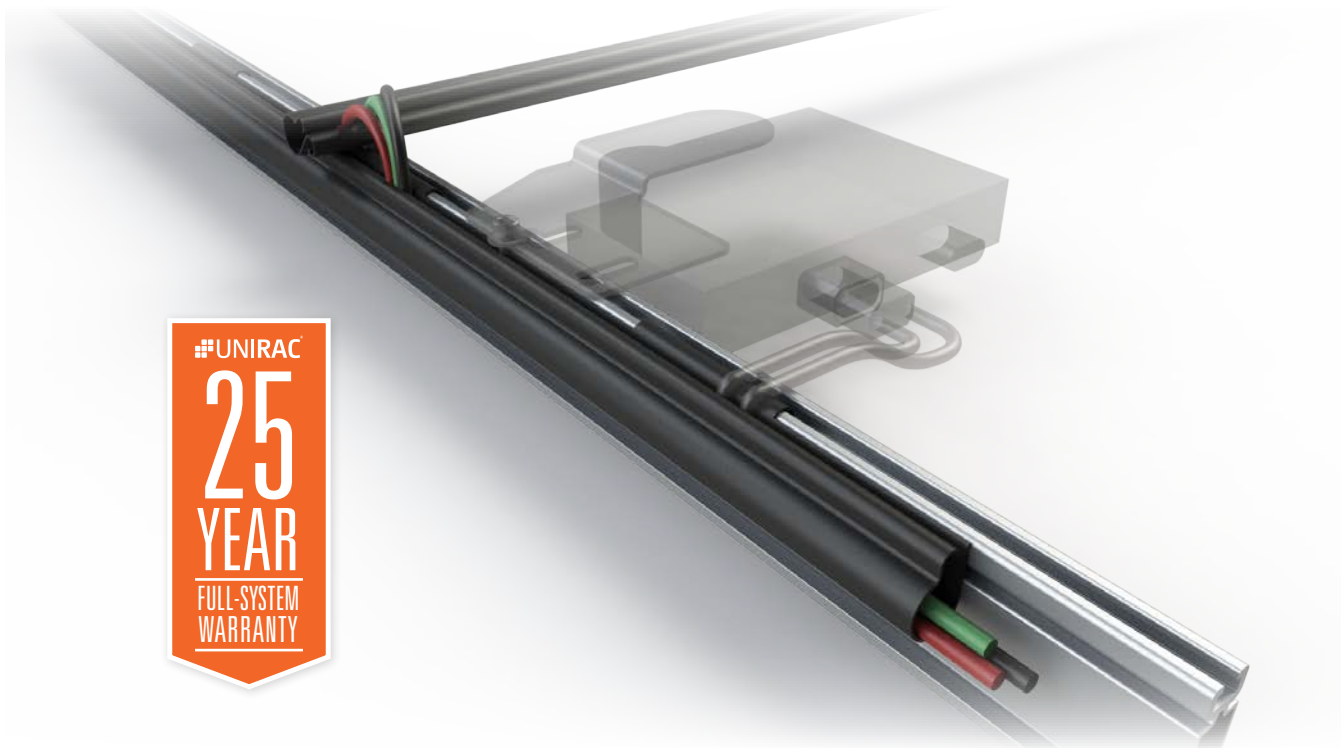


**SOLARTRAY** is the complete PV wire management solution. Featuring high-speed DROP & GO installation, **SOLARTRAY** secures wires with continuous support, for the ultimate protection from loose cables, failed inspections and service calls. Use **RAILTRAY** for wire runs parallel to rails and **BRIDGETRAY** for runs perpendicular to rails. With **SOLARTRAY**, you have everything you need for quick, professional wire management.



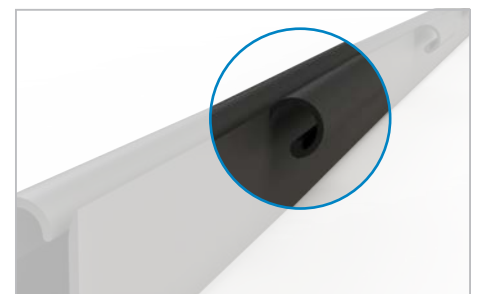
**ULTIMATE PROTECTION**

Like module junction boxes, SOLARTRAY is made of a UV stable polymer. The continuous wire channel supports and protects cables & connectors for the life of the array.



**DITCH THE CLIPS**

The spring action wire catch grips and tensions wires as they are inserted into the tray.



**HIGH-SPEED INSTALLATION**

Simply place the tray, drop in the wires and go. Compatible with standard module and MLPE mounting.

**EVERYTHING YOU NEED FOR A QUICK, PROFESSIONAL INSTALLATION**

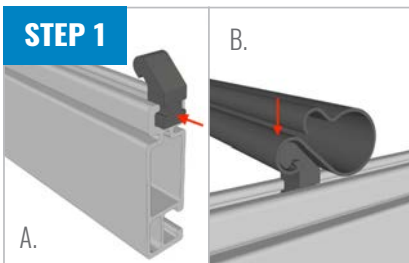
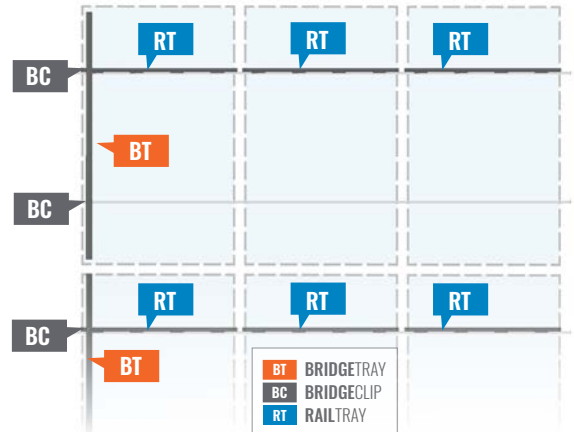
FOR QUESTIONS OR CUSTOMER SERVICE VISIT [UNIRAC.COM](http://UNIRAC.COM) OR CALL (505) 248-2702

## INSTALLATION GUIDE

### PRE-INSTALL

**BT BRIDGETRAY** supports north-south wire runs. It attaches to the top slot of **SOLARMOUNT Rail** with **BRIDGECLIPS**, lays underneath the module, and extends the length of a standard 60 cell module in portrait orientation

**RT RAILTRAY** is the width of a standard 60 cell module in portrait orientation and supports wires running along the Rail.

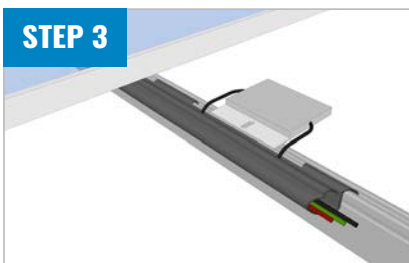


### STEP 1: INSTALL BRIDGETRAY

- Insert a **BRIDGECLIP** into the end of each of the two Rails that will support the module at the start of each north-south wire run. Slide the **BRIDGECLIPS** to the location of the wire run.
- Center **BRIDGETRAY** over the Rails and push it down onto the **BRIDGECLIPS** until it clicks into place. Repeat Step 1 for each row of modules.

### STEP 2: INSTALL RAILTRAY

At the location of each module, press **RAILTRAY** into the top rail mounting channel.



### STEP 3: INSERT WIRES

Mount MLPEs to Rail thru the open slots in the **RAILTRAY**; push wires and connectors into the TRAY.

#### TIPS:

Hold the wire so that it forms a small loop, then press the loop into the TRAY.

For landscape arrays, cut **BRIDGETRAY** to fit between the inner edges of the module frame width and follow Step 1 above. Plan for 1.5 **RAILTRAYS** per module.

**EVERYTHING YOU NEED FOR A QUICK, PROFESSIONAL INSTALLATION**

FOR QUESTIONS OR CUSTOMER SERVICE VISIT [UNIRAC.COM](http://UNIRAC.COM) OR CALL (505) 248-2702