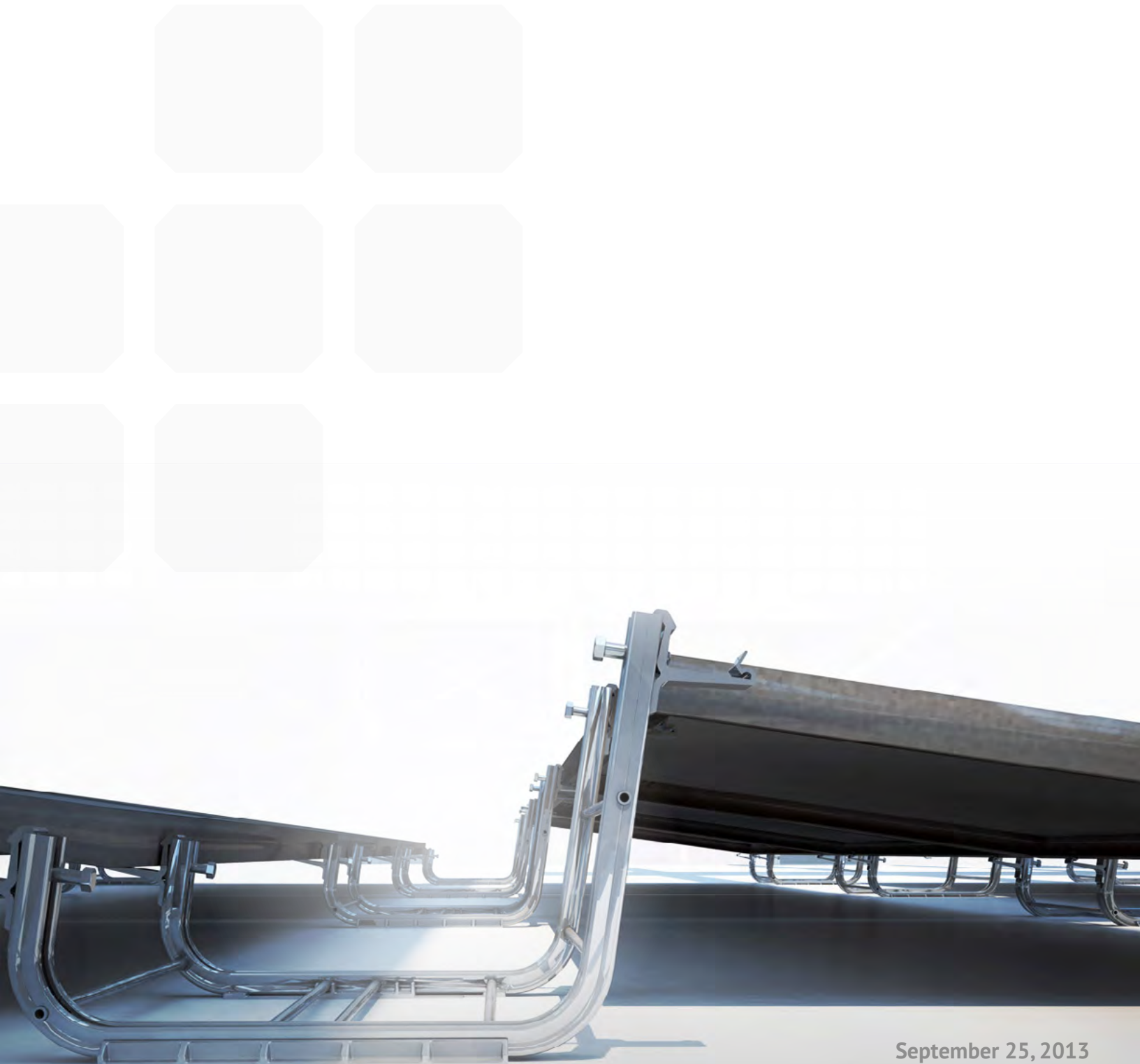




MASTER PRICE LIST



September 25, 2013

Creating a bill of materials is just a few clicks away with U-Builder, a powerful online tool that streamlines the process of designing a code compliant solar mounting system.

design.unirac.com





SOLARMOUNT

PAGE • 1

SUNFRAME

PAGE • 4

ROOFMOUNT

PAGE • 7

SOLARMOUNT-E

PAGE • 8

SOLARMOUNT-I

PAGE • 10

UNIRAC LARGE ARRAY

PAGE • 12

ROOF ATTACHMENTS & FLASHINGS

PAGE • 13

OPTIONAL ACCESSORIES

PAGE • 16



WITH BOTH FLUSH AND TILT MOUNTING OPTIONS, SM IS THE ORIGINAL UNIVERSAL RACKING SYSTEM

PRODUCT DOCUMENTATION LINKS

- [SM SALES BROCHURE](#)
- [SM INSTALLATION MANUAL](#)
- [SM TECHNICAL DATASHEET](#)
- [SM STANDARD RAIL DETAIL](#)
- [SM HD \(HEAVY DUTY\) RAIL DETAIL](#)
- [SM TOP MOUNTING CLAMP w/UGC-1 DETAIL](#)
- [SM L-FOOT DETAIL](#)
- [ENGINEERING LETTERS & ADDITIONAL INFO](#)

GET A SM QUOTE / BOM WITH U-BUILDER

KEY

SYMBOL	DESCRIPTION
--------	-------------

CLR	= CLEAR ANODIZED
-----	------------------

DRK	= DARK BRONZE ANODIZED (BLACK)
-----	--------------------------------

MILL	= MILL FINISH ALUMINUM
------	------------------------

SOLARMOUNT STANDARD RAILS - DISTRIBUTOR PACK

P/N	DESCRIPTION	LIST PRICE	PACK SIZE	SHIP WT. LBS
310132C	SM RAIL 132" CLR	\$ 70.00	144	1184.00
310168C	SM RAIL 168" CLR	\$ 88.00	144	1504.00
310168D	SM RAIL 168" DRK	\$ 100.00	144	1504.00
310208C	SM RAIL 208" CLR	\$ 106.00	144	1819.00
310240C	SM RAIL 240" CLR	\$ 127.00	144	2213.00
310240D	SM RAIL 240" DRK	\$ 152.00	144	2213.00

SOLARMOUNT STANDARD RAILS - PRO-PAK BUNDLE OF 8 RAILS

P/N	DESCRIPTION	LIST PRICE	PACK SIZE	SHIP WT. LBS
310132C-B	SM RAIL 132" CLR 8PK	\$ 74.50	8	74.00
310168C-B	SM RAIL 168" CLR 8PK	\$ 90.50	8	96.00
310208C-B	SM RAIL 208" CLR 8PK	\$ 110.25	8	116.00
310240C-B	SM RAIL 240" CLR 8PK	\$ 129.00	8	130.00

SOLARMOUNT HD (HEAVY DUTY) RAILS - SPECIAL ORDER

P/N	DESCRIPTION	LIST PRICE	PACK SIZE	SHIP WT. LBS
410144M	SMHD, RAIL 144" MILL	\$ 146.00	1	15.00
410168M	SMHD, RAIL 168" MILL	\$ 166.00	1	17.00
410204M	SMHD RAIL 204" MILL	\$ 201.00	1	20.00
410240M	SMHD, RAIL 240" MILL	\$ 235.00	1	25.00

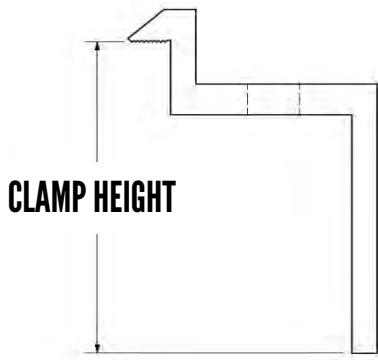
SOLARMOUNT L-FEET, SPLICE BARS & SPLICE PLATE

P/N	DESCRIPTION	LIST PRICE	PACK SIZE	SHIP WT. LBS
303001C	SM SPLICE BAR SERRATED CLR	\$ 5.90	20	9.00
303002D	SM SPLICE BAR SERRATED DRK	\$ 6.20	20	10.00
303003C	SM SPLICE PLATE CLR	\$ 14.25	20	17.00
304000C	SM L-FOOT SERRATED W/HDW, CLR	\$ 4.34	20	5.00
304000D	SM L-FOOT SERRATED W/HDW, DRK	\$ 4.54	20	5.00



TOP MOUNTING CLAMP HEIGHT & BOLT LENGTH

LETTER	MODULE THICKNESS	BOLT LG	
A	24MM - 26MM	0.94IN - 1.02IN	2.00IN
B	30MM - 32MM	1.18IN - 1.26IN	2.00IN
C	34MM - 36MM	1.34IN - 1.42IN	2.00IN
D	38MM - 40MM	1.50IN - 1.57IN	2.00IN
K	39MM - 41MM	1.54IN - 1.61IN	2.00IN
J	41MM - 43MM	1.61IN - 1.69IN	2.50IN
F	45MM - 47MM	1.77IN - 1.85IN	2.50IN
M	47MM - 49MM	1.85IN - 1.93IN	2.50IN
E	50MM - 52MM	1.97IN - 2.05IN	2.50IN
N	57MM - 59MM	2.24IN - 2.32IN	2.50IN
H	SANYO LIPPED MODULES		1.50IN
G	SHARP LIPPED MODULES		2.50IN



KEY

SYMBOL	DESCRIPTION
CLR	= CLEAR ANODIZED
DRK	= DARK BRONZE ANODIZED (BLACK)

SOLARMOUNT BOTTOM MOUNTING CLAMPS

P/N	DESCRIPTION	LIST PRICE	PACK SIZE	SHIP WT. LBS
302000C	SM BOTTOM UP CLIPS W/HDW, CLR	\$ 1.30	20	2.00

SOLARMOUNT TOP MOUNTING ENDCLAMPS

P/N	DESCRIPTION	LIST PRICE	PACK SIZE	SHIP WT. LBS
302001C	SM ENDCLAMP A, W/HDW, CLR	\$ 2.22	20	2.00
302002C	SM ENDCLAMP B, W/HDW, CLR	\$ 2.22	20	2.00
302002D	SM ENDCLAMP B, W/HDW, DRK	\$ 2.87	20	2.00
302003C	SM ENDCLAMP C, W/HDW, CLR	\$ 2.22	20	2.00
302003D	SM ENDCLAMP C, W/HDW, DRK	\$ 2.87	20	2.00
302004C	SM ENDCLAMP D, W/HDW, CLR	\$ 2.22	20	3.00
302004D	SM ENDCLAMP D, W/HDW, DRK	\$ 2.87	20	2.00
302005C	SM ENDCLAMP E, W/HDW, CLR	\$ 2.22	20	3.00
302005D	SM ENDCLAMP E, W/HDW, DRK	\$ 2.87	20	3.00
302006C	SM ENDCLAMP F, W/HDW, CLR	\$ 2.22	20	3.00
302006D	SM ENDCLAMP F, W/HDW, DRK	\$ 2.87	20	3.00
302007D	SM ENDCLAMP G, W/HDW, DRK	\$ 2.95	20	3.00
302008C	SM ENDCLAMP J, W/HDW, CLR	\$ 2.22	20	3.00
302008D	SM ENDCLAMP J, W/HDW, DRK	\$ 2.87	20	3.00
302009C	SM ENDCLAMP K, W/HDW, CLR	\$ 2.22	20	3.00
302009D	SM ENDCLAMP K, W/HDW, DRK	\$ 2.87	20	3.00
302010C	SM ENDCLAMP L, W/HDW, CLR	\$ 3.80	20	3.00
302011C	SM ENDCLAMP M, W/HDW, CLR	\$ 2.22	20	3.00
302012C	SM ENDCLAMP N, W/HDW, CLR	\$ 2.22	20	6.00

SOLARMOUNT TOP MOUNTING MIDCLAMPS

P/N	DESCRIPTION	LIST PRICE	PACK SIZE	SHIP WT. LBS
302101C	SM MID CLAMP ABCDK, W/HDW, CLR	\$ 2.48	20	2.00
302101D	SM MID CLAMP ABCDK, W/HDW, DRK	\$ 3.42	20	2.00
302103C	SM MID CLAMP EFJ, W/HDW, CLR	\$ 2.48	20	2.00
302104D	SM MID CLAMP EFJ, W/HDW, DRK	\$ 3.42	20	2.00
302105D	SM MID CLAMP G, W/HDW, DRK	\$ 3.55	20	3.00
302106D	SM MID CLAMP H, W/HDW, DRK	\$ 3.55	20	3.00



PRODUCT DOCUMENTATION LINKS

- [HIGH PROFILE TILT INSTALLATION GUIDE](#)
- [LOW PROFILE TILT INSTALLATION GUIDE](#)
- [SM TILT TECHNICAL BULLETIN](#)
- [ENGINEERING LETTERS & ADDITIONAL INFO](#)

GET A SM TILT QUOTE / BOM WITH U-BUILDER

KEY

SYMBOL	DESCRIPTION
CLR	= CLEAR ANODIZED
DRK	= DARK BRONZE ANODIZED (BLACK)
AL	= MILL FINISH ALUMINUM
SS	= STAINLESS STEEL

SOLARMOUNT FIXED & ADJUSTABLE TILT LEGS - SINGLE LEG KIT (L-FEET NOT INCLUDED)

P/N	DESCRIPTION	LIST PRICE	PACK SIZE	SHIP WT. LBS
307007M	SM FIXED TILT LEG, 7", W/HDW	\$ 15.75	1	1.00
307015M	SM FIXED TILT LEG, 15", W/HDW	\$ 19.95	1	2.00
307020M	SM FIXED TILT LEG, 20", W/HDW	\$ 22.58	1	2.00
307034M	SM FIXED TILT LEG, 34", W/HDW	\$ 30.00	1	3.00
307107M	SM ADJ TILT LEG, 8-12", W/HDW	\$ 39.00	1	2.00
307115M	SM ADJ TILT LEG, 18-30", W/HDW	\$ 42.00	1	3.00
307120M	SM ADJ TILT LEG, 26-44", W/HDW	\$ 44.00	1	4.00
307134M	SM ADJ TILT LEG, 40-72", W/HDW	\$ 83.00	1	5.00

1 MOUNTING HOLE LOCATIONS ARE 1 IN. FROM EACH END OF TILT LEG(S)

SOLARMOUNT T-BOLTS & MISC. HARDWARE

P/N	DESCRIPTION	LIST PRICE	PACK SIZE	SHIP WT. LBS
330001C	T-BOLTS&NUTS, 1/4" X 2", CLR	\$ 1.50	20	1.00
330002D	T-BOLTS&NUTS, 1/4" X 2", DRK	\$ 1.75	20	1.00
330003C	T-BOLTS&NUTS, 1/4" X 2.5", CLR	\$ 1.75	20	1.00
330004D	T-BOLTS&NUTS, 1/4" X 2.5", DRK	\$ 2.00	20	1.00
330005S	3/8 HDW FOR RAIL TO L-FOOT	\$ 2.59	20	1.00
330006S	SM SPLICE BAR TEK SCREW	\$ 0.65	80	1.00

SECURITY HARDWARE

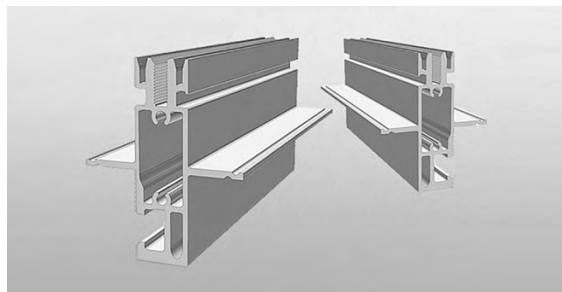
P/N	DESCRIPTION	LIST PRICE	PACK SIZE	SHIP WT. LBS
030002C	HDW BREAKAWAY NUT, 3/8"-16, AL	\$ 1.65	20	1.00
030003C	HDW BREAKAWAY NUT, 1/4"-20, AL	\$ 1.25	20	1.00
030024C	HDW STAR BOLT, 3/8"-16X1 1/4"	\$ 3.60	20	1.00
030025C	HDW STAR KEY, 1/4",	\$ 19.61	1	1.00
030026C	HDW STAR KEY, 3/8",	\$ 23.63	1	1.00

2 BREAKNUTS FOR USE w/ TOP MOUNT CLAMPS & L-FOOT BOLT

3 STARHEAD BOLTS DO NOT FIT IN SOLARMOUNT RAIL SLOT

GROUNDING & BONDING HARDWARE

P/N	DESCRIPTION	LIST PRICE	PACK SIZE	SHIP WT. LBS
308001S	SM GROUND CLIP #1, UGC-1 SS,	\$ 2.29	20	1.00
008002S	GROUND WEEBLUG #1	\$ 11.20	20	2.00
008009P	ILSCO LAY IN LUG	\$ 8.40	20	2.00



**SUPERIOR AESTHETICS FOR
RESIDENTIAL PROJECTS WITH A SLEEK,
GAPLESS DESIGN THAT SITS LOW TO
THE ROOFLINE**

PRODUCT DOCUMENTATION LINKS

- [SF SALES BROCHURE](#)
- [SF INSTALLATION MANUAL](#)
- [SF RAIL DETAIL](#)
- [SF CAPSTRIP CROSS-SECTION DETAIL](#)
- [ENGINEERING LETTERS & ADDITIONAL INFO](#)

GET A SF QUOTE / BOM WITH U-BUILDER

KEY

SYMBOL	DESCRIPTION
CLR	= CLEAR ANODIZED
DRK	= DARK BRONZE ANODIZED (BLACK)
AL	= MILL FINISH ALUMINUM
UV	= UV RESISTANT PLASTIC BLACK

www.unirac.com

COPYRIGHT © 2012 - 2013 / UNIRAC INCORPORATED
ALL RIGHTS RESERVED PUB130925

SUNFRAME RAIL - BUNDLE OF 8 RAILS

P/N	DESCRIPTION	LIST PRICE	PACK SIZE	SHIP WT. LBS
210192C	SF RAIL 192", THREADED, CLR	\$ 171.63	8	153.00
210192D	SF RAIL 192", THREADED, DRK	\$ 197.63	8	153.00

SUNFRAME L-FEET, SPLICE BARS & SPLICE PLATE

P/N	DESCRIPTION	LIST PRICE	PACK SIZE	SHIP WT. LBS
303001C	SM SPLICE BAR SERRATED CLR	\$ 5.90	20	9.00
303002D	SM SPLICE BAR SERRATED DRK	\$ 6.20	20	10.00
304000C	SM L-FOOT SERRATED W/HDW, CLR	\$ 4.34	20	5.00
304000D	SM L-FOOT SERRATED W/HDW, DRK	\$ 4.54	20	5.00
204001C	SF L-FOOT ADJUSTING SLIDER	\$ 15.15	20	19.00
202000D	SF ENDCAPS, THREADED, UV-BLACK	\$ 3.40	20	2.00

SUNFRAME MISC. HARDWARE

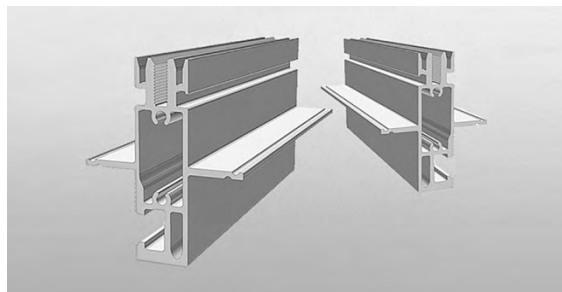
P/N	DESCRIPTION	LIST PRICE	PACK SIZE	SHIP WT. LBS
330005S	3/8 HDW FOR RAIL TO L-FOOT	\$ 2.59	20	1.00
330006S	SM SPLICE BAR TEK SCREW	\$ 0.65	80	1.00
030002C	HDW BREAKAWAY NUT, 3/8"-16, AL	\$ 1.65	20	1.00

GROUNDING & BONDING HARDWARE

P/N	DESCRIPTION	LIST PRICE	PACK SIZE	SHIP WT. LBS
008002S	GROUND WEEBLUG #1	\$ 11.20	20	2.00
008009P	ILSCO LAY IN LUG	\$ 8.40	20	2.00

[CLICK HERE TO FIND A UNIRAC DISTRIBUTOR](#)

PRICES & AVAILABILITY SUBJECT TO CHANGE WITHOUT NOTICE



CAP STRIP HEIGHT & SCREW LENGTH

LETTER	MODULE THICKNESS	SCREW LG
C	34MM - 36MM	1.34IN - 1.42IN
D	38MM - 40MM	1.50IN - 1.57IN
J	41MM - 43MM	1.61IN - 1.69IN
F	45MM - 47MM	1.77IN - 1.85IN
E	50MM - 52MM	1.97IN - 2.05IN
H	SANYO LIPPED MODULES	0.75IN
L	SANYO BIFACIAL MODULES	1.50IN
G	SHARP LIPPED MODULES	1.00IN

SUNFRAME CAPSTRIPS (CAPSTRIP SCREWS SOLD SEPARATELY)

P/N	DESCRIPTION	LIST PRICE	PACK SIZE	SHIP WT. LBS
202001C	SF CAPSTRIP, 192", C, CLR	\$ 52.63	8	40.00
202001D	SF CAPSTRIP, 192", C, DRK	\$ 60.25	8	40.00
202002C	SF CAPSTRIP, 192", D, CLR	\$ 52.63	8	36.00
202002D	SF CAPSTRIP, 192", D, DRK	\$ 60.25	8	36.00
202003C	SF CAPSTRIP, 192", E, CLR	\$ 60.25	8	44.00
202003D	SF CAPSTRIP, 192", E, DRK	\$ 72.50	8	44.00
202004C	SF CAPSTRIP, 192", F, CLR	\$ 58.75	8	42.00
202004D	SF CAPSTRIP, 192", F, DRK	\$ 70.13	8	42.00
202005D	SF CAPSTRIP, 192", G, DRK	\$ 81.63	8	54.00
202006D	SF CAPSTRIP, 192", H, DRK	\$ 74.63	8	54.00
202007C	SF CAPSTRIP, 192", L, CLR	\$ 64.50	8	64.00
202007D	SF CAPSTRIP, 192", L, DRK	\$ 77.50	8	64.00
202008D	SF CAPSTRIP, 192", J, DRK	\$ 58.75	8	42.00

SUNFRAME CAPSTRIP SCREWS

P/N	DESCRIPTION	LIST PRICE	PACK SIZE	SHIP WT. LBS
209000C	SF CAP SCREW, 1/4 X 3/4" CLR	\$ 0.69	100	2.00
209000D	SF CAP SCREW, 1/4 X 3/4" DRK	\$ 0.93	100	2.00
209001C	SF CAP SCREW, 1/4 X 1", CLR	\$ 0.76	100	2.00
209001D	SF CAP SCREW, 1/4 X 1", DRK	\$ 1.01	100	2.00
209002C	SF CAP SCREW, 1/4 X 1.25", CLR	\$ 0.83	100	2.00
209002D	SF CAP SCREW, 1/4 X 1.25", DRK	\$ 1.08	100	2.00
209003C	SF CAP SCREW, 1/4 X 1.5", CLR	\$ 0.91	100	3.00
209003D	SF CAP SCREW, 1/4 X 1.5", DRK	\$ 1.14	100	3.00

KEY

SYMBOL DESCRIPTION

CLR = CLEAR ANODIZED

DRK = DARK BRONZE ANODIZED (BLACK)

TWO PARTS. ONE TOOL. ZERO ISSUES.



INTRODUCING THE UNIRAC

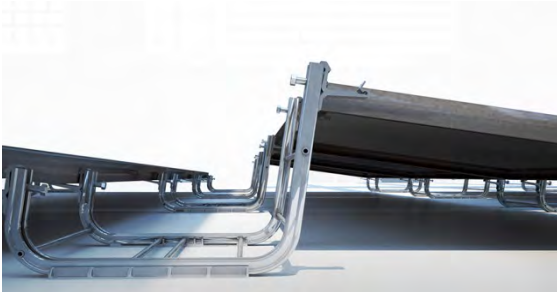
RM ROOF
MOUNT

GET AN EXCLUSIVE LOOK:

Solar Power International: Chicago, IL
Booth: 1307 • Oct 21-24, 2013

The Power of Simplicity.

UNIRAC
Bright Thinking in Solar



ONE PIECE SUPPORT STRUCTURE. UNIVERSAL MODULE CLAMPS WITH INTEGRATED BONDING. EACH RM BALLAST BAY IS COMPACT, WEIGHS LESS THAN 3.5 POUNDS AND IS EASY TO HANDLE.

PRODUCT DOCUMENTATION LINKS

- [RM SALES BROCHURE](#)
- [RM QUICK START GUIDE](#)
- [RM SPECIFICATION SHEET](#)
- [RM INSTALLATION ANIMATION](#)
- [ENGINEERING LETTERS & ADDITIONAL INFO](#)

GET A RM QUOTE / BOM WITH U-BUILDER

FOR TECHNICAL QUESTIONS ABOUT THE NEW UNIRAC ROOF MOUNT (RM) CONTACT OUR DEDICATED PRODUCT TOLL-FREE HOTLINE BETWEEN 8AM – 5PM (MDT)

1-855-387-8450

www.unirac.com

COPYRIGHT © 2012 - 2013 / UNIRAC INCORPORATED
ALL RIGHTS RESERVED PUB130925

ROOF MOUNT BALLAST BAY, CLAMPS, BOLT & ROOF PAD

P/N	DESCRIPTION	LIST PRICE	PACK SIZE	SHIP WT. LBS
310710	RM BALLAST BAY 10 DEGREE	\$ 81.20	100	309.00
310750	RM MODULE CLIP	\$ 2.15	200	36.40
310751	RM HEX BOLT	\$ 0.90	400	28.00
310760	RM ROOF PAD	\$ 4.25	200	38.00

OPTIONAL ROOF MOUNT SEISMIC ATTACHMENT, HARDWARE & FLASHINGS

P/N	DESCRIPTION	LIST PRICE	PACK SIZE	SHIP WT. LBS
622070	RM SEISMIC ATTACHMENT	\$ 82.65	20	200.00
030004C	HDW CONCEALER SCR 1.5", DP1	\$ 0.25	100	2.00
030005C	HDW CONCEALER SCR 2", DP1	\$ 0.28	100	2.00
030006C	HDW CONCEALER SCR 2.75", DP4	\$ 0.56	100	3.00
030007C	HDW CONCEALER SCR 3", DP1	\$ 0.36	100	3.00
030008C	HDW CONCEALER SCR 3.75", DP4	\$ 0.62	100	3.00
030009C	HDW CONCEALER SCR 1.375", DP4	\$ 0.54	100	2.00
030010C	HDW CONCEALER SCR 4", DP1	\$ 0.44	100	4.00
030011C	HDW CONCEALER SCR 4.5", DP1	\$ 0.51	100	4.00
030012C	HDW CONCEALER SCR 4.75", DP4	\$ 0.75	100	4.00
030013C	HDW CONCEALER SCR 5", DP1	\$ 0.57	100	4.00
030014C	HDW CONCEALER SCR 5.75", DP4	\$ 0.81	100	5.00
030015C	HDW CONCEALER SCR 6", DP1	\$ 0.69	100	5.00
030016C	HDW CONCEALER SCR 6.75", DP4	\$ 0.87	100	5.00
030017C	HDW CONCEALER SCR 7", DP1	\$ 0.79	100	6.00
030018C	HDW CONCEALER SCR 7.75", DP4	\$ 0.95	100	6.00
030019C	HDW FERRULES 48"#1	\$ 23.63	1	2.00
030001C	HDW ANCHORS, #14	\$ 0.68	20	1.00
004017D	FLASHING PEEL & STICK EPDM BLK	\$ 7.02	50	23.00
004012C	FLASHING #1 GALVALUME	\$ 6.89	1	26.00

④ DP1 CONCEALER SCRS FASTEN INTO METAL (14 GA. MAX) OR WOOD.

⑤ DP4 CONCEALER SCRS FASTEN INTO METAL FROM 14 GA. UP TO 1/4"

GROUNDING & BONDING HARDWARE

P/N	DESCRIPTION	LIST PRICE	PACK SIZE	SHIP WT. LBS
008002S	GROUND WEEBLUG #1	\$ 11.20	20	2.00
008009P	ILSCO LAY IN LUG	\$ 8.40	20	2.00

[CLICK HERE TO FIND A UNIRAC DISTRIBUTOR](#)

PRICES & AVAILABILITY SUBJECT TO CHANGE WITHOUT NOTICE



**DESIGNED FOR QUICK & EASY
INSTALLATION, OFFERING INTEGRATED
BONDING AND UNIVERSAL TOP
MOUNTING CLAMPS**

PRODUCT DOCUMENTATION LINKS

- [SME SALES BROCHURE](#)
- [SME INSTALLATION MANUAL](#)
- [SME TECHNICAL DATASHEET](#)
- [ENGINEERING LETTERS & ADDITIONAL INFO](#)

GET A SME QUOTE / BOM WITH U-BUILDER

KEY

SYMBOL	DESCRIPTION
--------	-------------

MILL	= MILL FINISH ALUMINUM
------	------------------------

www.unirac.com

COPYRIGHT © 2012 - 2013 / UNIRAC INCORPORATED
ALL RIGHTS RESERVED PUB130925

SME STANDARD BEAM - DISTRIBUTOR PACK

P/N	DESCRIPTION	LIST PRICE	PACK SIZE	SHIP WT. LBS
012132M	SM-E BEAM 132" MILL	\$ 57.42	160	1240.00
012168M	SM-E BEAM 168" MILL	\$ 73.08	160	1500.00
012208M	SM-E BEAM 208" MILL	\$ 90.48	160	1960.00
012240M	SM-E BEAM 240" MILL	\$ 104.40	160	2250.00

SME STANDARD BEAM - PRO-PAK BUNDLE OF 6 RAILS

P/N	DESCRIPTION	LIST PRICE	PACK SIZE	SHIP WT. LBS
012132M-B	SM-E BEAM 132" MILL 6PK	\$ 60.72	6	47.00
012168M-B	SM-E BEAM 168" MILL 6PK	\$ 77.25	6	62.00
012208M-B	SM-E BEAM 208" MILL 6PK	\$ 94.91	6	74.00
012240M-B	SM-E BEAM 240" MILL 6PK	\$ 110.40	6	84.00

SME FLANGE FOOT, RETAINING SPLICE & LEVELING GAUGE

P/N	DESCRIPTION	LIST PRICE	PACK SIZE	SHIP WT. LBS
004009M	SM-E/SM-I 1 FLANGE FOOT	\$ 7.50	20	7.00
003005M	SM-E/SM-I CLIP MILL	\$ 1.15	20	3.00
003002M	SM-E RETAINING SPLICE MILL	\$ 6.50	20	3.00
003004M	SM-E LEVELING GAUGE	\$ 7.00	10	5.00

SME MISC. HARDWARE

P/N	DESCRIPTION	LIST PRICE	PACK SIZE	SHIP WT. LBS
003006S	MODULE POSITIVE STOP	\$ 0.34	20	2.00
003007M	SM-E BEAM POSITIVE STOP MILL	\$ 3.25	20	2.00
008007S	SM-E FIVE WIRE CLIP	\$ 0.57	500	1.00
030001S	SM-E SPLICE TEK SCREW	\$ 2.79	40	1.00

GROUNDING & BONDING HARDWARE

P/N	DESCRIPTION	LIST PRICE	PACK SIZE	SHIP WT. LBS
008006S	SM-E UGC-3 BONDING CLIP	\$ 1.91	500	1.00
008002S	GROUND WEEBLUG #1	\$ 11.20	20	2.00
008009P	ILSCO LAY IN LUG	\$ 8.40	20	2.00

[CLICK HERE TO FIND A UNIRAC DISTRIBUTOR](#)

PRICES & AVAILABILITY SUBJECT TO CHANGE WITHOUT NOTICE



PRODUCT DOCUMENTATION LINKS

- [SME TILT LEG TECHNICAL DATASHEET](#)
- [SME TILT LEG DETAILS](#)
- [SME TILT LEGS TECH BULLETIN](#)
- [ADDITIONAL INFORMATION](#)

GET A SME TILT QUOTE / BOM WITH U-BUILDER

SME UNIVERSAL TOP MOUNTING ENDCLAMPS

P/N	DESCRIPTION	LIST PRICE	PACK SIZE	SHIP WT. LBS
002010D	SM-E END CLAMP DRK 24-36.4MM	\$ 9.08	20	5.00
002010M	SM-E END CLAMP MILL 24-36.4MM	\$ 8.27	20	5.00
002011D	SM-E END CLAMP DRK 36.5-51MM	\$ 9.16	20	5.00
002011M	SM-E END CLAMP MILL 36.5-51MM	\$ 8.33	20	5.00

SME UNIVERSAL TOP MOUNTING MIDCLAMPS

P/N	DESCRIPTION	LIST PRICE	PACK SIZE	SHIP WT. LBS
002105D	SM-E MID CLAMP DRK 24-38MM	\$ 5.06	20	5.00
002105M	SM-E MID CLAMP MILL 24-38MM	\$ 4.60	20	5.00
002106D	SM-E MID CLAMP DRK 36.5-51MM	\$ 5.24	20	5.00
002106M	SM-E MID CLAMP MILL 36.5-51MM	\$ 4.76	20	5.00

SME FIXED TILT LEGS - FRONT FOOT & BACK LEG

P/N	DESCRIPTION	LIST PRICE	PACK SIZE	SHIP WT. LBS
006007M	SM-E 3/8" 7 IN FIXED TILT	\$ 20.80	1	2.00
006015M	SM-E 3/8" 15 IN FIXED TILT	\$ 25.97	1	4.00
006020M	SM-E 3/8" 20 IN FIXED TILT	\$ 29.18	1	6.00
006034M	SM-E 3/8" 34 IN FIXED TILT	\$ 37.87	1	8.00
007007M	SM-E 5/16" 7 IN FIXED TILT	\$ 20.80	1	2.00
007015M	SM-E 5/16" 15 IN FIXED TILT	\$ 25.97	1	4.00
007020M	SM-E 5/16" 20 IN FIXED TILT	\$ 29.18	1	6.00
007034M	SM-E 5/16" 34 IN FIXED TILT	\$ 37.87	1	8.00

6 SM-E 3/8" TILT KITS ARE USED WHEN MOUNTING ON UNIRAC 2-PIECE STANDOFFS

7 USE SM-E 5/16" TILT KITS FOR ALL OTHER APPLICATIONS

KEY

SYMBOL	DESCRIPTION
--------	-------------

DRK	= DARK BRONZE ANODIZED (BLACK)
-----	--------------------------------

MILL	= MILL FINISH ALUMINUM
------	------------------------

www.unirac.com

COPYRIGHT © 2012 - 2013 / UNIRAC INCORPORATED
 ALL RIGHTS RESERVED PUB130925

[CLICK HERE TO FIND A UNIRAC DISTRIBUTOR](#)

PRICES & AVAILABILITY SUBJECT TO CHANGE WITHOUT NOTICE



ENGINEERED FOR FLUSH MOUNT APPLICATIONS, SM-I OFFERS ONE OF THE BEST VALUES IN THE INDUSTRY

PRODUCT DOCUMENTATION LINKS

- [SMI SALES BROCHURE](#)
- [SMI INSTALLATION MANUAL](#)
- [SMI TECHNICAL DATASHEET](#)
- [ENGINEERING LETTERS & ADDITIONAL INFO](#)

GET A SMI QUOTE / BOM WITH U-BUILDER

KEY

SYMBOL	DESCRIPTION
MILL	= MILL FINISH ALUMINUM

www.unirac.com

COPYRIGHT © 2012 - 2013 / UNIRAC INCORPORATED
ALL RIGHTS RESERVED PUB130925

SMI STANDARD RAILS

P/N	DESCRIPTION	LIST PRICE	PACK SIZE	SHIP WT. LBS
010144M	SM-I 1.0 RAIL, 144" MILL	\$ 37.90	50	216.00
011144M	SM-I 2.5 RAIL, 144" MILL	\$ 52.65	20	125.00
011192M	SM-I 2.5 RAIL, 192" MILL	\$ 68.50	20	186.00

SMI FLANGE FEET, SPLICE KIT & ENPHASE MOUNTING KIT

P/N	DESCRIPTION	LIST PRICE	PACK SIZE	SHIP WT. LBS
004000M	SM-I 1 FLANGE FOOT	\$ 7.23	20	3.00
004001M	SM-I 2 FLANGE CONNECTOR	\$ 7.94	20	3.00
004002C	SM-I 2 FLANGE CONNECTOR & BUTYL	\$ 8.94	20	4.00
003000S	SM-I SPLICE KIT W/HDW	\$ 3.88	20	3.00
003001S	SM-I SPLICE KIT & GROUND W/HDW	\$ 7.76	20	3.00
008000C	SM-I ENPHASE MOUNTING KIT	\$ 2.58	20	12.00

8 w/GROUND INCLUDES GROUND CLIP, WEEB 9.5 FOR SPLICING RAILS TOGETHER

9 ORDER w/o GROUND IF USED AS RETAINING CLIP ONLY

SMI GROUNDING & BONDING HARDWARE

P/N	DESCRIPTION	LIST PRICE	PACK SIZE	SHIP WT. LBS
008005S	SM-I GROUND CLIP, UGC-2, SS	\$ 2.30	20	1.00
008001S	GROUND CLIP, WEEB 9.5	\$ 2.25	20	1.00
008002S	GROUND WEEBLUG #1	\$ 11.20	20	2.00
008009P	ILSCO LAY IN LUG	\$ 8.40	20	2.00

LIMITED AVAILABILITY
CONTACT A UNIRAC DISTRIBUTOR

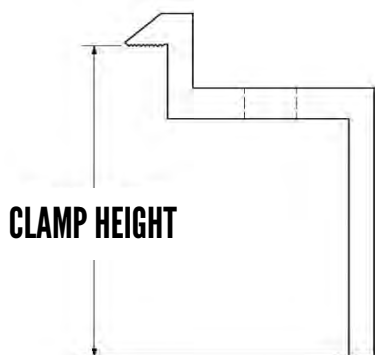
[CLICK HERE TO FIND A UNIRAC DISTRIBUTOR](#)

PRICES & AVAILABILITY SUBJECT TO CHANGE WITHOUT NOTICE



TOP MOUNTING CLAMP HEIGHT & BOLT LENGTH

LETTER	MODULE THICKNESS	BOLT LG	
A	24MM - 26MM	0.94IN - 1.02IN	2.00IN
B	30MM - 32MM	1.18IN - 1.26IN	2.00IN
C	34MM - 36MM	1.34IN - 1.42IN	2.00IN
D	38MM - 40MM	1.50IN - 1.57IN	2.00IN
K	39MM - 41MM	1.54IN - 1.61IN	2.00IN
J	41MM - 43MM	1.61IN - 1.69IN	2.50IN
F	45MM - 47MM	1.77IN - 1.85IN	2.50IN
M	47MM - 49MM	1.85IN - 1.93IN	2.50IN
E	50MM - 52MM	1.97IN - 2.05IN	2.50IN
N	57MM - 59MM	2.24IN - 2.32IN	2.50IN
H	SANYO LIPPED MODULES		1.50IN



KEY

SYMBOL	DESCRIPTION
CLR	= CLEAR ANODIZED

SMI TOP MOUNTING ENDCLAMPS w/SLIDER & HARDWARE

P/N	DESCRIPTION	LIST PRICE	PACK SIZE	SHIP WT. LBS
002001C	SM-I END CLAMP A, CLR	\$ 2.77	20	3.00
002002C	SM-I END CLAMP B, CLR	\$ 2.77	20	3.00
002003C	SM-I END CLAMP C, CLR	\$ 2.77	20	3.00
002004C	SM-I END CLAMP D, CLR	\$ 2.77	20	3.00
002005C	SM-I END CLAMP E, CLR	\$ 2.77	20	3.00
002006C	SM-I END CLAMP F, CLR	\$ 2.77	20	3.00
002007C	SM-I END CLAMP J, CLR	\$ 2.77	20	3.00
002008C	SM-I END CLAMP K, CLR	\$ 2.77	20	3.00
002009C	SM-I END CLAMP M, CLR	\$ 2.77	20	5.00
002012C	SM-I END CLAMP N, CLR	\$ 2.77	20	3.00

SMI TOP MOUNTING MIDCLAMPS w/SLIDER & HARDWARE

P/N	DESCRIPTION	LIST PRICE	PACK SIZE	SHIP WT. LBS
002101C	SM-I MID CLAMP, A, CLR	\$ 2.77	20	3.00
002102C	SM-I MID CLAMP, BC, CLR	\$ 2.77	20	3.00
002103C	SM-I MID CLAMP, DK, CLR	\$ 2.77	20	3.00
002104C	SM-I MID CLAMP, EFJ, CLR	\$ 2.77	20	3.00

LIMITED AVAILABILITY

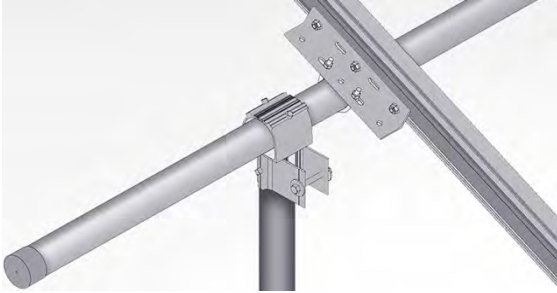
CONTACT A UNIRAC DISTRIBUTOR

www.unirac.com

COPYRIGHT © 2012 - 2013 / UNIRAC INCORPORATED
ALL RIGHTS RESERVED PUB130925

[CLICK HERE TO FIND A UNIRAC DISTRIBUTOR](#)

PRICES & AVAILABILITY SUBJECT TO CHANGE WITHOUT NOTICE



DESIGNED TO SUPPORT A WIDE RANGE OF SITE AND CLIMATIC CHALLENGES. U-LA COMPONENTS ARE COMPATIBLE WITH SM RAILS AND INSTALLER SUPPLIED PIPE TO FORM DURABLE, RIGID TRUSS STRUCTURES.

PRODUCT DOCUMENTATION LINKS

- [ULA SALES BROCHURE](#)
- [INSTALL MANUAL - ALUM. COMPONENTS](#)
- [INSTALL MANUAL - STEEL COMPONENTS](#)
- [ADDITIONAL INFORMATION](#)

[GET A U-LA QUOTE](#)

SEE SOLARMOUNT

FOR RAILS, CLAMPS & BONDING COMPONENTS
PAGES 1, 2 & 3

KEY

SYMBOL	DESCRIPTION
--------	-------------

AL	= MILL FINISH ALUMINUM
----	------------------------

STL	= ZINC PLATED STEEL
-----	---------------------

ULA COMPONENTS FOR 2 IN. ID SCHEDULE 40/80 PIPE

P/N	DESCRIPTION	LIST PRICE	PACK SIZE	SHIP WT. LBS
403200C	ULA BRACE, 2"@ 7 FT, AL	\$ 68.00	1	10.00
403201C	ULA BRACE, 2"@ 10.5 FT, AL	\$ 99.00	1	16.00
403202C	ULA BRACE, 2"@ 14 FT, AL	\$ 129.00	1	21.00
403203C	ULA BRACE, 2"@ 21 FT, AL	\$ 185.00	1	31.00
403211C	ULA FRONT CAP, 2", AL	\$ 43.00	1	2.00
403211G	ULA FRONT CAP, 2", STL	\$ 71.00	1	4.00
403213C	ULA RAIL BRACKET, 2", AL	\$ 18.99	1	2.00
403214C	ULA REAR CAP, 2", AL	\$ 43.00	1	2.00
403214G	ULA REAR CAP, 2", STL	\$ 55.00	1	4.00
403215C	ULA SLIDER, 2", AL	\$ 20.48	1	1.00
403215S	ULA SLIDER 1 FLANGE, 2", STL	\$ 41.00	1	2.00
403216S	ULA THREADED FOOT, 2", STL	\$ 41.00	1	2.00

ULA COMPONENTS FOR 3 IN. ID SCHEDULE 40/80 PIPE

P/N	DESCRIPTION	LIST PRICE	PACK SIZE	SHIP WT. LBS
403301C	ULA BRACE, 3" @ 7 FT, AL	\$ 109.00	1	14.00
403302C	ULA BRACE, 3" @ 10.5 FT, AL	\$ 158.00	1	21.00
403303C	ULA BRACE, 3" @ 14 FT, AL	\$ 207.00	1	28.00
403311G	ULA FRONT CAP, 3", STL	\$ 100.00	1	6.00
403313G	ULA RAIL BRACKET, 3", AL	\$ 22.18	1	2.00
403314G	ULA REAR CAP, 3", STL	\$ 83.00	1	5.00
403315S	ULA SLIDER 1 FLANGE, 3", STL	\$ 69.00	1	1.00
403316S	ULA THREADED FOOT, 3", STL	\$ 89.00	1	3.00

ROOF ATTACHMENTS & FLASHINGS

MASTER PRICE LIST



PRODUCT DOCUMENTATION LINKS

- [STANDOFF\(S\) INSTALLATION GUIDE](#)
- [TWO PIECE AL. STANDOFF TECH. DATASHEET](#)
- [TWO PIECE ALUMINUM STANDOFF DETAIL](#)
- [FLATTOP STEEL STANDOFF DETAIL](#)
- [RAISED FLANGE STANDOFF DETAIL](#)

ROOF ATTACHMENTS - TWO-PIECE ALUMINUM STANDOFFS (LAG BOLTS NOT INCLUDED)

P/N	DESCRIPTION	LIST PRICE	PACK SIZE	SHIP WT. LBS
004300C	STANDOFF 3" 2 PIECE AL, CLR	\$ 11.82	24	15.00
004300D	STANDOFF 3" 2 PIECE AL, DRK	\$ 12.40	24	15.00
004400C	STANDOFF 4" 2 PIECE AL, CLR	\$ 12.82	24	17.00
004400D	STANDOFF 4" 2 PIECE AL, DRK	\$ 13.56	24	17.00
004600C	STANDOFF 6" 2 PIECE AL, CLR	\$ 14.90	24	21.00
004600D	STANDOFF 6" 2 PIECE AL, DRK	\$ 15.65	24	21.00
004700C	STANDOFF 7" 2 PIECE AL, CLR	\$ 16.07	24	23.00
004700D	STANDOFF 7" 2 PIECE AL, DRK	\$ 16.65	24	22.00

ROOF ATTACHMENTS - FLAT TOP STEEL STANDOFFS (LAG BOLTS NOT INCLUDED)

P/N	DESCRIPTION	LIST PRICE	PACK SIZE	SHIP WT. LBS
004301G	STANDOFF 3" FLATTOP STL	\$ 18.08	24	27.00
004401G	STANDOFF 4" FLATTOP STL	\$ 18.97	24	31.00
004601G	STANDOFF 6" FLATTOP STL	\$ 19.69	24	40.00
004701G	STANDOFF 7" FLATTOP STL	\$ 22.33	24	44.00

ROOF ATTACHMENTS - RAISED FLANGE STEEL STANDOFFS (LAG BOLTS NOT INCLUDED)

P/N	DESCRIPTION	LIST PRICE	PACK SIZE	SHIP WT. LBS
004302G	STANDOFF 3" RAISED FLANGE STL	\$ 18.72	24	28.00
004402G	STANDOFF 4" RAISED FLANGE STL	\$ 20.78	24	32.00
004602G	STANDOFF 6" RAISED FLANGE STL	\$ 22.22	24	42.00
004702G	STANDOFF 7" RAISED FLANGE STL	\$ 24.00	24	46.00

FLASHINGS - OATEY FLASHING FOR STANDOFFS

P/N	DESCRIPTION	LIST PRICE	PACK SIZE	SHIP WT. LBS
004013C	FLASHING 18X18 OATEY 12836 AL	\$ 12.00	12	11.00
004014C	FLASHING OATEY 11840 GLVLUME	\$ 6.40	12	9.00
004015C	FLASHING OATEY 12920 AL	\$ 8.70	12	5.00

10 FOR PITCHED ROOF UP TO 40 DEG. - NOT FOR HOT MOPPED OR BUILT-UP ROOF

KEY

SYMBOL DESCRIPTION

CLR	= CLEAR ANODIZED
DRK	= DARK BRONZE ANODIZED (BLACK)
AL	= ALUMINUM
STL	= ZINC PLATED STEEL

ROOF ATTACHMENTS - TWO-PIECE ALUMINUM STANDOFF HARDWARE

P/N	DESCRIPTION	LIST PRICE	PACK SIZE	SHIP WT. LBS
330007M	3/8 BOLT & EPDM WASHER	\$ 3.40	24	1.00

www.unirac.com

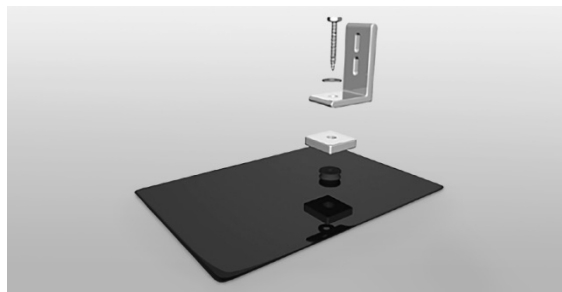
COPYRIGHT © 2012 - 2013 / UNIRAC INCORPORATED
ALL RIGHTS RESERVED PUB130925

[CLICK HERE TO FIND A UNIRAC DISTRIBUTOR](#)

PRICES & AVAILABILITY SUBJECT TO CHANGE WITHOUT NOTICE

ROOF ATTACHMENTS & FLASHINGS

MASTER PRICE LIST



PRODUCT DOCUMENTATION LINKS

- [FLAT FLASHING INSTALLATION GUIDE](#)
- [TILE HOOK INSTALLATION MANUAL](#)
- [HANGER BOLT INSTALLATION GUIDE](#)

FLASHINGS - COMPOSITION SHINGLE FLASHINGS (LAG BOLTS NOT INCLUDED)

P/N	DESCRIPTION	LIST PRICE	PACK SIZE	SHIP WT. LBS
004010D	UNIRAC FLAT FLASHING	\$ 14.00	48	21.00
004011C	QUICKMOUNT FLASHING HD 9.5X12.5	\$ 30.00	18	13.00
004011D	QUICKMOUNT FLASHING 9.5X12.5 BLK	\$ 31.61	18	13.00

ROOF ATTACHMENTS - TILE ROOF ATTACHMENTS (LAG BOLTS NOT INCLUDED)

P/N	DESCRIPTION	LIST PRICE	PACK SIZE	SHIP WT. LBS
004006C	TILE HOOK FRONT MOUNT, AL	\$ 32.50	20	23.00
004007C	TILE HOOK SIDE MOUNT, AL	\$ 28.50	20	22.00
004008C	TILE HOOK TOP MOUNT, AL	\$ 32.50	20	25.00

ROOF ATTACHMENTS - HANGER BOLT & DRIVER TOOL

P/N	DESCRIPTION	LIST PRICE	PACK SIZE	SHIP WT. LBS
030021C	HDW HANGER BOLT 3/8", W/HDW	\$ 10.75	20	7.00
030022C	HDW HANGER BOLT DRIVER 3/8"	\$ 23.63	1	1.00

ROOF ATTACHMENTS - MISC. HARDWARE

P/N	DESCRIPTION	LIST PRICE	PACK SIZE	SHIP WT. LBS
030020C	HDW FLAT WASHER, 5/16", SS	\$ 0.12	20	1.00
030023C	HDW LAG BOLT, 5/16 X 3.5	\$ 0.82	24	2.00

KEY

SYMBOL	DESCRIPTION
--------	-------------

AL	= MILL FINISH ALUMINUM
----	------------------------

SS	= STAINLESS STEEL
----	-------------------

www.unirac.com

COPYRIGHT © 2012 - 2013 / UNIRAC INCORPORATED

ALL RIGHTS RESERVED PUB130925

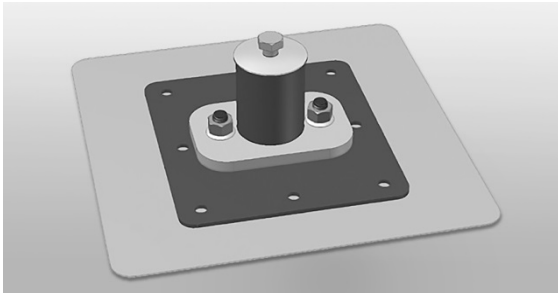
[CLICK HERE TO FIND A UNIRAC DISTRIBUTOR](#)

PRICES & AVAILABILITY SUBJECT TO CHANGE WITHOUT NOTICE

PAGE • 14

ROOF ATTACHMENTS & FLASHINGS

MASTER PRICE LIST



PRODUCT DOCUMENTATION LINKS

- [FASTFOOT INSTALLATION GUIDE](#)
- [FASTFOOT DETAIL](#)

ROOF ATTACHMENTS / FLASHINGS - FAST FOOT, HARDWARE & FLASHING

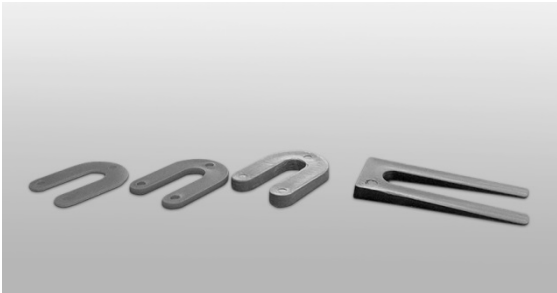
P/N	DESCRIPTION	LIST PRICE	PACK SIZE	SHIP WT. LBS
004003C	FAST FOOT 3" ASSEMBLY	\$ 45.25	20	37.00
004004C	FAST FOOT 4" ASSEMBLY	\$ 45.75	20	39.00
004005C	FAST FOOT 7" ASSEMBLY	\$ 46.95	20	44.00
030004C	HDW CONCEALER SCR 1.5", DP1	\$ 0.25	100	2.00
030005C	HDW CONCEALER SCR 2", DP1	\$ 0.28	100	2.00
030006C	HDW CONCEALER SCR 2.75", DP4	\$ 0.56	100	3.00
030007C	HDW CONCEALER SCR 3", DP1	\$ 0.36	100	3.00
030008C	HDW CONCEALER SCR 3.75", DP4	\$ 0.62	100	3.00
030009C	HDW CONCEALER SCR 1.375", DP4	\$ 0.54	100	2.00
030010C	HDW CONCEALER SCR 4", DP1	\$ 0.44	100	4.00
030011C	HDW CONCEALER SCR 4.5", DP1	\$ 0.51	100	4.00
030012C	HDW CONCEALER SCR 4.75", DP4	\$ 0.75	100	4.00
030013C	HDW CONCEALER SCR 5", DP1	\$ 0.57	100	4.00
030014C	HDW CONCEALER SCR 5.75", DP4	\$ 0.81	100	5.00
030015C	HDW CONCEALER SCR 6", DP1	\$ 0.69	100	5.00
030016C	HDW CONCEALER SCR 6.75", DP4	\$ 0.87	100	5.00
030017C	HDW CONCEALER SCR 7", DP1	\$ 0.79	100	6.00
030018C	HDW CONCEALER SCR 7.75", DP4	\$ 0.95	100	6.00
030019C	HDW FERRULES 48"#1	\$ 23.63	1	2.00
030001C	HDW ANCHORS, #14	\$ 0.68	20	1.00
004017D	FLASHING PEEL & STICK EPDM BLK	\$ 7.02	50	23.00
004012C	FLASHING #1 GALVALUME	\$ 6.89	1	26.00

① DP1 CONCEALER SCRS FASTEN INTO METAL (14 GA. MAX) OR WOOD.

② DP4 CONCEALER SCRS FASTEN INTO METAL FROM 14 GA. UP TO 1/4"

OPTIONAL ACCESSORIES

MASTER PRICE LIST



PRODUCT DOCUMENTATION LINKS

- [SHIMS INSTALLATION SHEET](#)

WIRE MANAGEMENT

P/N	DESCRIPTION	LIST PRICE	PACK SIZE	SHIP WT. LBS
008003S	ONE WIRE CLIP, SS	\$ 0.36	500	3.00
008004S	TWO WIRE CLIP, SS	\$ 0.40	500	3.00
309001D	PUSH MOUNT CABLE TIE BLK	\$ 0.30	100	1.00

SHIMS

P/N	DESCRIPTION	LIST PRICE	PACK SIZE	SHIP WT. LBS
009001D	SHIM 1 1/2" X 2" X 1/16, BLUE	\$ 0.50	20	1.00
009002D	SHIM 1 1/2" X 2" X 1/4, BLK	\$ 0.50	20	1.00
009003D	SHIM 1 1/2" X 2" X 1/8, RED	\$ 0.50	20	1.00
009004D	SHIM 1.5"X3 3/8", TAPERED BLK	\$ 0.70	20	1.00

KEY

SYMBOL	DESCRIPTION
--------	-------------

SS	= STAINLESS STEEL
----	-------------------

www.unirac.com

COPYRIGHT © 2012 - 2013 / UNIRAC INCORPORATED
ALL RIGHTS RESERVED PUB130925

[CLICK HERE TO FIND A UNIRAC DISTRIBUTOR](#)

PRICES & AVAILABILITY SUBJECT TO CHANGE WITHOUT NOTICE

PAGE • 16

